

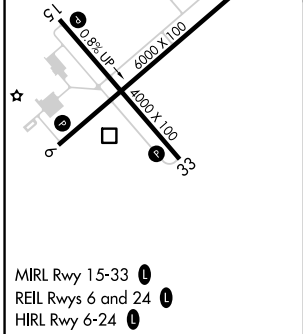
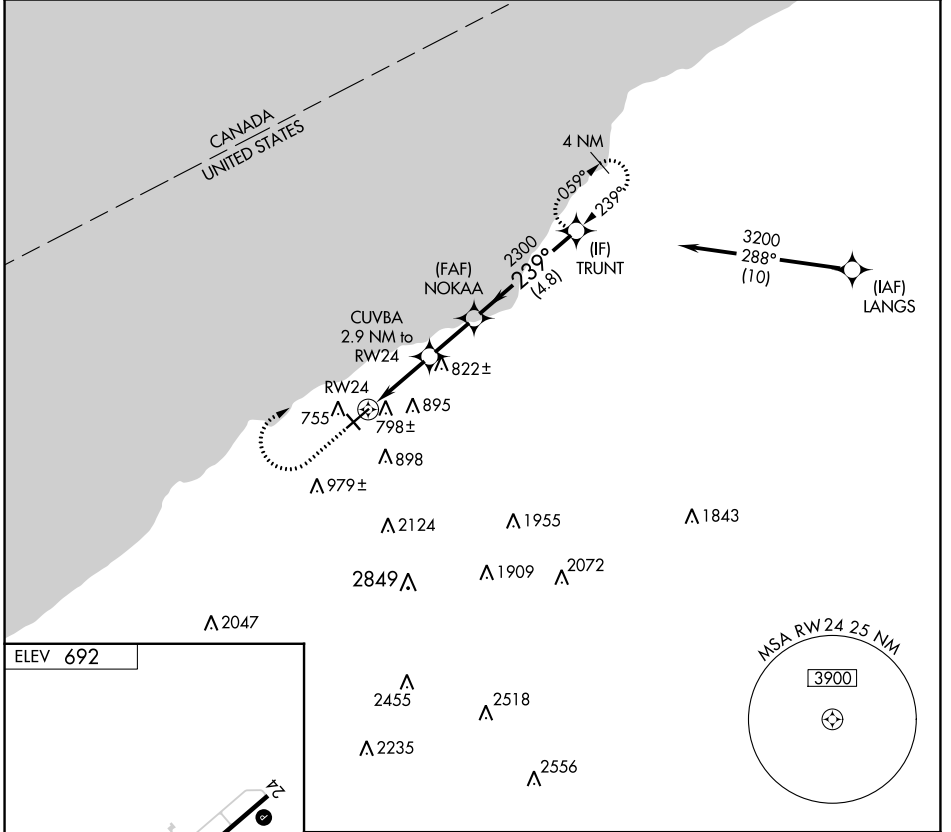
APP CRS	Rwy Idg	N/A
239°	TDZE	N/A
	Apt Elev	692

RNAV (GPS)-A

CHAUTAUGUA COUNTY/DUNKIRK (DKK)

RNP APCH - GPS.	<p>⚠ Circling Cat D NA southeast of Rwy 6 and southwest of Rwy 33. ⚠ Circling Rwy 6, 24, 33 NA at night. ❄ -22°C Rwy 6, 24, 33 helicopter visibility reduction below 1 SM NA.</p>	<p>MISSED APPROACH: Climb to 1900 then climbing right turn to 3200 direct TRUNT and hold.</p>

ASOS 119.275	BUFFALO APP CON 126.5 317.6	UNICOM 123.075 (CTAF) 0
------------------------	---------------------------------------	-----------------------------------



MIRL Rwy 15-33 (L)
 REIL Rws 6 and 24 (L)
 HIRL Rwy 6-24 (L)

1900	3200	TRUNT	Visual Segment - Obstacles.	
↑	↪	✧		
RW24		CUVBA 2.9 NM to RW24	NOKAA	TRUNT
1440		2300	239°	3200
← 2.9 NM		← 2.1 NM	← 4.8 NM	
CATEGORY	A	B	C	D
☑ CIRCLING	1200-1 508 (600-1)	1320-1 628 (700-1)	1640-2¾ 948 (1000-2¾)	2140-3 1448 (1500-3)

NE-2, 22 FEB 2024 to 21 MAR 2024

NE-2, 22 FEB 2024 to 21 MAR 2024