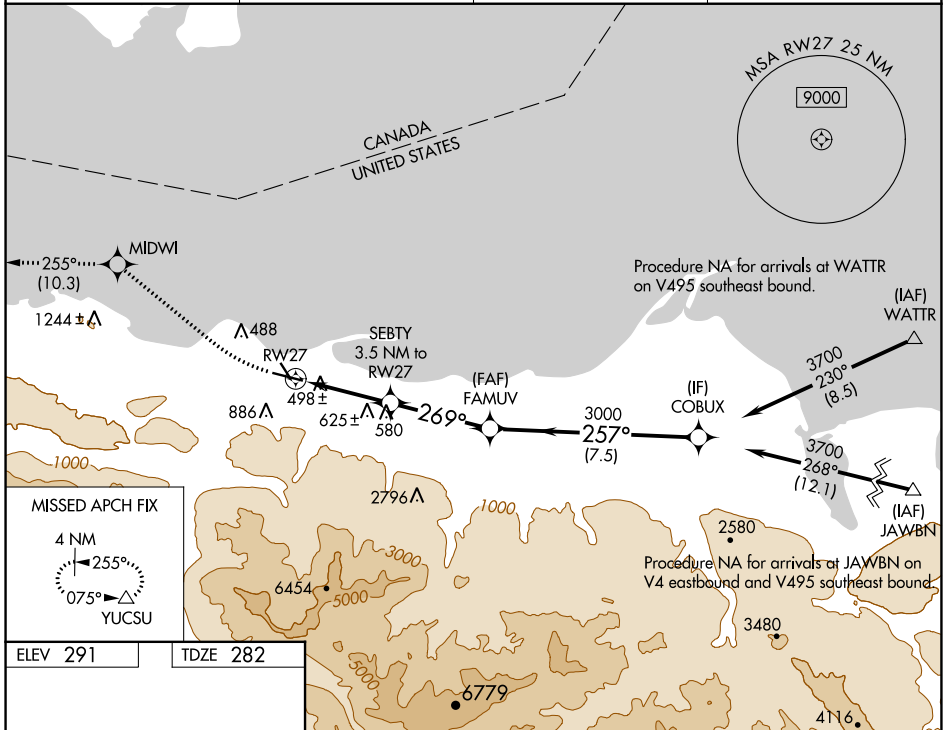


WAAS CH <b>90338</b> <b>W27A</b>	APP CRS <b>269°</b>	Rwy ldg TDZE Apt Elev	<b>4993</b> <b>282</b> <b>291</b>
----------------------------------------	------------------------	-----------------------------	-----------------------------------------

# RNAV (GPS) RWY 27

WILLIAM R FAIRCHILD INTL (CLM)

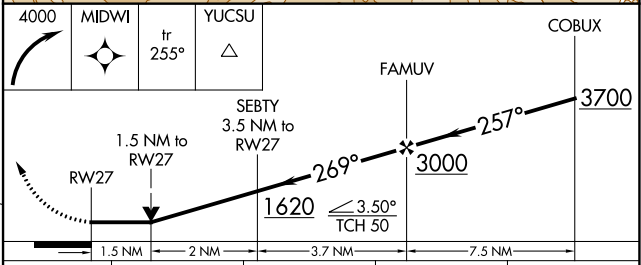
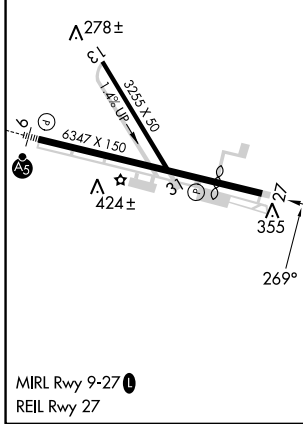
RNP APCH - GPS.		MISSED APPROACH: Climbing right turn to 4000 direct MIDWI and on track 255° to YUCSU and hold.	
<p>▼ Circling Rwy 13, 31 NA at night.                  ▲ Rwy 27 helicopter visibility reduction below ¼ SM NA.                  Circling NA south of Rwy 9-27.</p>		ASOS <b>135.175</b>	WHIDBEY APP CON <b>118.2 285.65</b>
		CLNC DEL <b>124.15</b>	UNICOM <b>122.975 (CTAF) 1</b>



NW-1, 22 FEB 2024 to 21 MAR 2024

NW-1, 22 FEB 2024 to 21 MAR 2024

ELEV 291	TDZE 282
----------	----------



	CATEGORY	A	B	C	D
LP	MDA	760-1	478 (500-1)	760-1 <sup>3</sup> / <sub>8</sub>	478 (500-1 <sup>3</sup> / <sub>8</sub> )
LNAV	MDA	920-1	638 (700-1)	920-1 <sup>3</sup> / <sub>4</sub>	638 (700-1 <sup>3</sup> / <sub>4</sub> )
☑	CIRCLING	920-1	629 (700-1)	920-1 <sup>3</sup> / <sub>4</sub> 629 (700-1 <sup>3</sup> / <sub>4</sub> )	1000-2 <sup>1</sup> / <sub>4</sub> 709 (800-2 <sup>1</sup> / <sub>4</sub> )