

WAAS CH 7703 W09A	APP CRS 088°	Rwy ldg TDZE Apt Elev	6347 285 291
---------------------------------------	------------------------	-----------------------------	---

RNAV (GPS) RWY 9

WILLIAM R FAIRCHILD INTL (CLM)

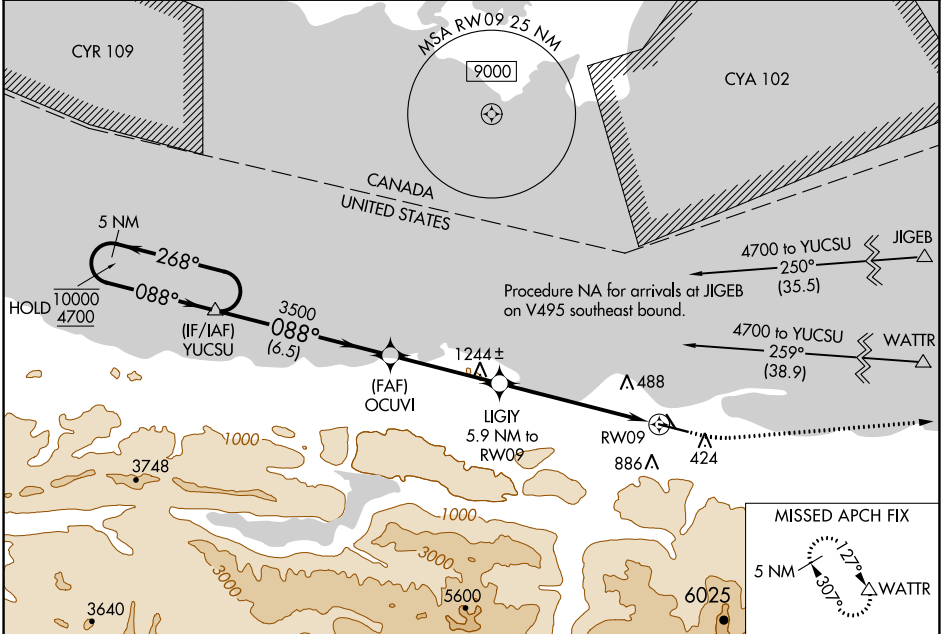
RNP APCH - GPS.

⚠ Circling Rwy 13, 31 NA at night. Baro-VNAV NA. For inop ALS, increase LNAV/VNAV all Cats visibility to 1 3/8 SM and LNAV Cat C/D visibility to 1 7/8 SM. Circling NA south of Rwy 9-27.

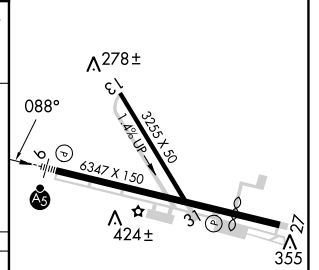
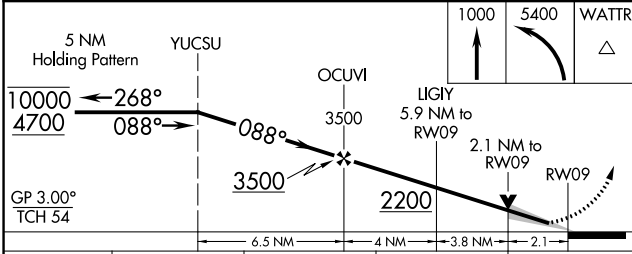
MALSR
AS

MISSED APPROACH: Climb to 1000 then climbing left turn to 5400 direct WATTR and hold, continue climb-in-hold to 5400.

ASOS 135.175	WHIDBEY APP CON 118.2 285.65	CLNC DEL 124.15	UNICOM 122.975 (CTAF)
------------------------	--	---------------------------	---------------------------------



ELEV 291	TDZE 285
----------	----------



CATEGORY	A	B	C	D
LPV DA		505-1/2	220 (300-1/2)	
LNAV/VNAV DA		757-1 1/8	472 (500-1 1/8)	
LNAV MDA	960-1/2	675 (700-1/2)	960-1 1/2	675 (700-1 1/2)
C CIRCLING	960-1	669 (700-1)	960-1 7/8 669 (700-1 7/8)	1000-2 1/4 709 (800-2 1/4)

MIRL Rwy 9-27

REIL Rwy 27

NW-1, 22 FEB 2024 to 21 MAR 2024

NW-1, 22 FEB 2024 to 21 MAR 2024