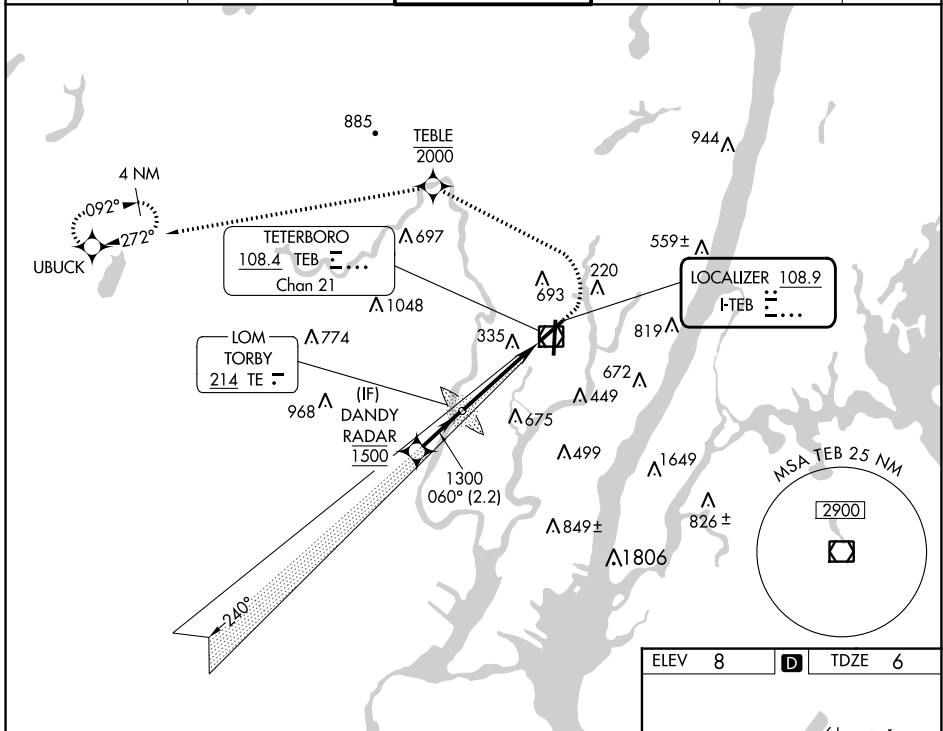


LOC I-TEB 108.9	APP CRS 060°	Rwy Idg 6013
		TDZE 6
		Apt Elev 8

COPTER ILS Y or LOC Y RWY 6

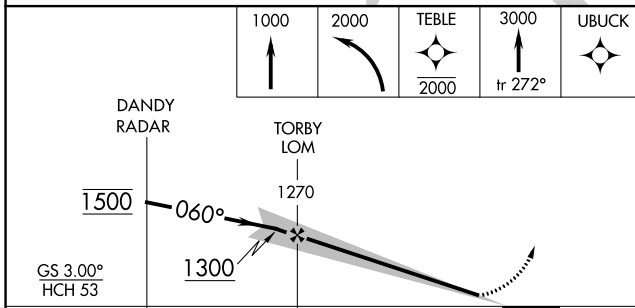
TETERBORO (TEB)

RNP APCH - GPS. RADAR required.		MALS AS	MISSED APPROACH: Climb to 1000, then climbing left turn to 2000 direct TEBLE, cross TEBLE at or below 2000, then climb to 3000 on track 272° to UBUCK and hold.			
▼ ▲ NA						
D-ATIS 114.2 132.85	NEW YORK APP CON 127.6 379.9	TETERBORO TOWER 119.5	GND CON 121.9	CLNC DEL 128.05	CPDLC	

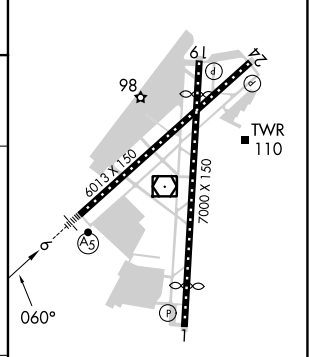


NE-2, 22 FEB 2024 to 21 MAR 2024

NE-2, 22 FEB 2024 to 21 MAR 2024



ELEV 8	D	TDZE 6
--------	---	--------



CATEGORY	COPTER	
H-ILS 6	206/12	200 (200-¼)
H-LOC 6	560/24	554 (600-½)

TDZ/CL Rws 6 and 19					
REIL Rws 1, 6, 19 and 24					
HIRL Rws 1-19 and 6-24					
FAF to MAP 3.8 NM					
Knots	45	60	75	90	105
Min:Sec	5:04	3:48	3:02	2:32	2:10

COPTER ILS Y or LOC Y RWY 6