

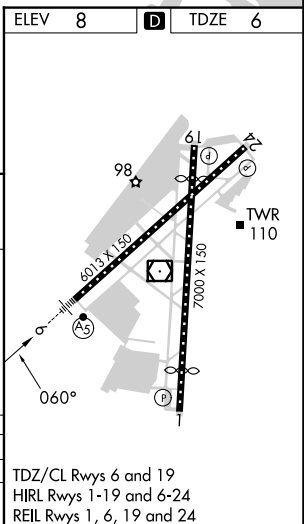
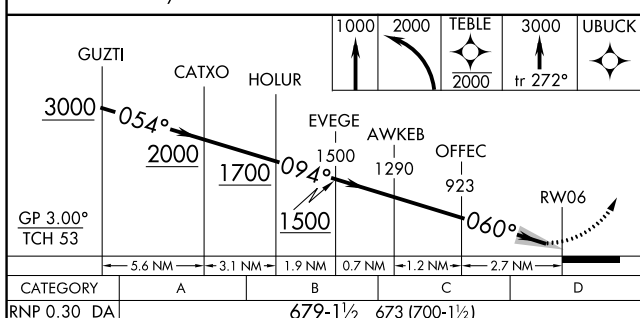
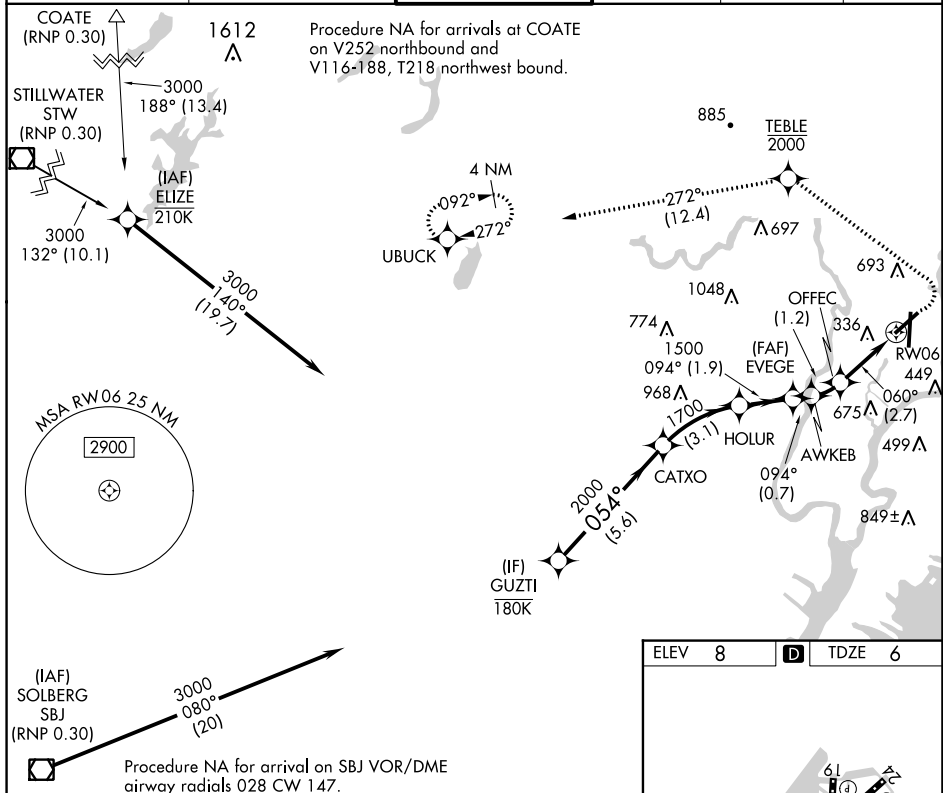
APP CRS	Rwy Idg	6013
060°	TDZE	6
	Apt Elev	8

RNAV (RNP) Z RWY 6

TETERBORO (TEB)

RNP AR APCH - GPS. RADAR required.	MALSRR	MISSED APPROACH: Climb to 1000, then climbing left turn to 2000 direct TEBLE, cross TEBLE at or below 2000, then climb to 3000 on track 272° to UBUCK and hold.
▼ For uncompensated Baro-VNAV systems, procedure NA below -13°C or above 54°C. For inop ALS, increase RNP 0.30 all Cats visibility to 1½ SM.		

D-ATIS 114.2 132.85	NEW YORK APP CON 127.6 379.9	TETERBORO TOWER 119.5	GND CON 121.9	CLNC DEL 128.05	CPDLC
-------------------------------	--	---------------------------------	-------------------------	---------------------------	-------



AUTHORIZATION REQUIRED

NE-2, 22 FEB 2024 to 21 MAR 2024

NE-2, 22 FEB 2024 to 21 MAR 2024