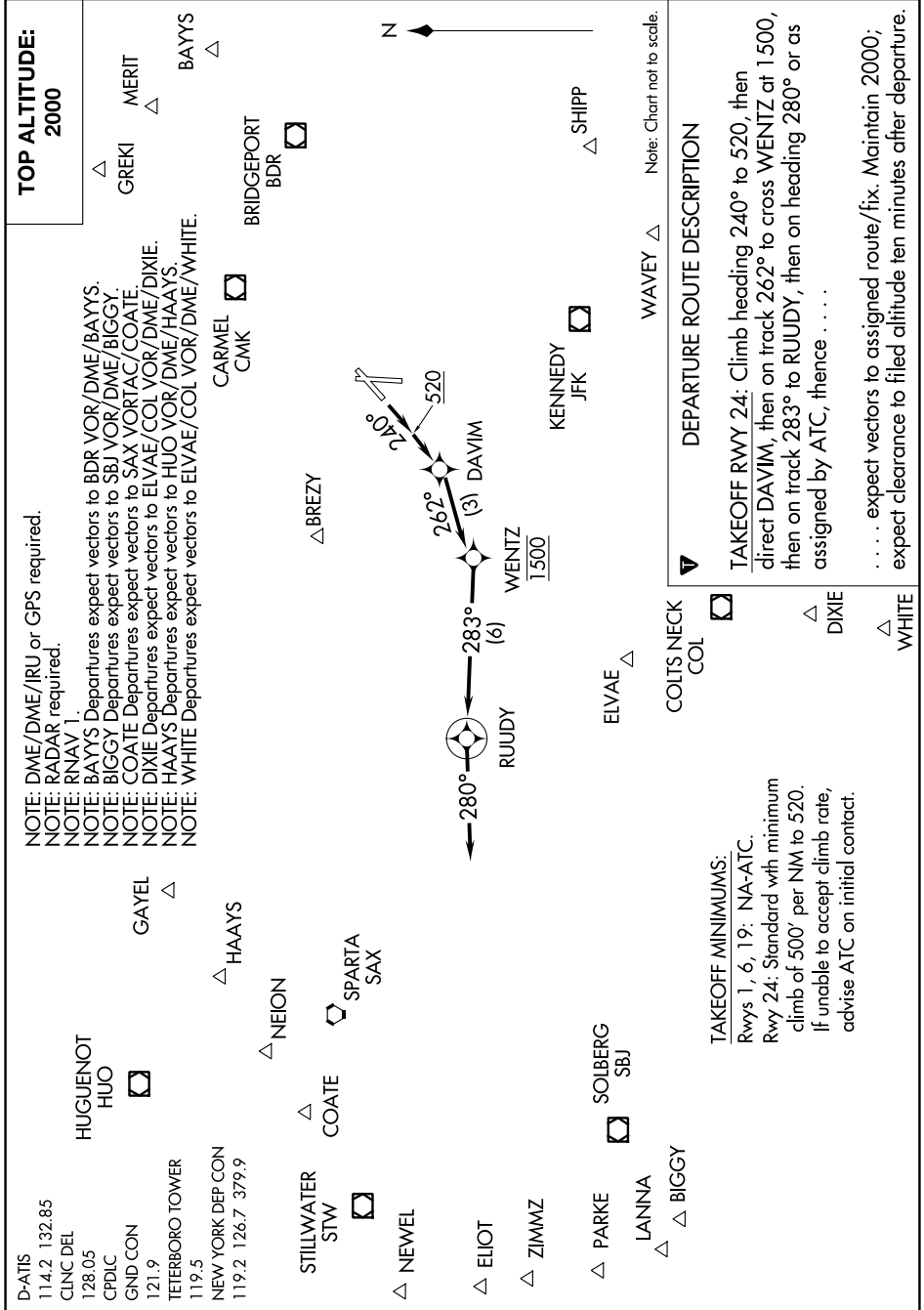


RUUDY SIX DEPARTURE (RNAV)

NE-2, 22 FEB 2024 to 21 MAR 2024



NOTE: DME/DME/IRU or GPS required.
 NOTE: RADAR required.
 NOTE: RNAV 1.
 NOTE: BAYYS Departures expect vectors to BDR VOR/DME/BAYYS.
 NOTE: BIGGY Departures expect vectors to SBJ VOR/DME/BIGGY.
 NOTE: COATE Departures expect vectors to SAX VORTAC/COATE.
 NOTE: DIXIE Departures expect vectors to ELVAE/COL VOR/DME/DIXIE.
 NOTE: HAAYS Departures expect vectors to HUU VOR/DME/HAAYS.
 NOTE: WHITE Departures expect vectors to ELVAE/COL VOR/DME/WHITE.

D-ATIS 114.2 132.85
 CLINC DEL 128.05
 CPDLC 121.9
 GND CON 119.5
 TETERBORO TOWER 119.2 126.7 379.9
 NEW YORK DEP CON 119.2 126.7 379.9

RUUDY SIX DEPARTURE (RNAV)
 (RUUDY6.RUUDY) 17AUG17

TOP ALTITUDE:
 2000

DEPARTURE ROUTE DESCRIPTION

TAKEOFF RWY 24: Climb heading 240° to 520, then direct DAVIM, then on track 262° to cross WENTZ at 1500, then on track 283° to RUUDY, then on heading 280° or as assigned by ATC, thence
 expect vectors to assigned route/fix. Maintain 2000; expect clearance to filed altitude ten minutes after departure.

TAKEOFF MINIMUMS:

Rwys 1, 6, 19: NA-ATC.
 Rwy 24: Standard with minimum climb of 500' per NM to 520.
 If unable to accept climb rate, advise ATC on initial contact.

NE-2, 22 FEB 2024 to 21 MAR 2024