

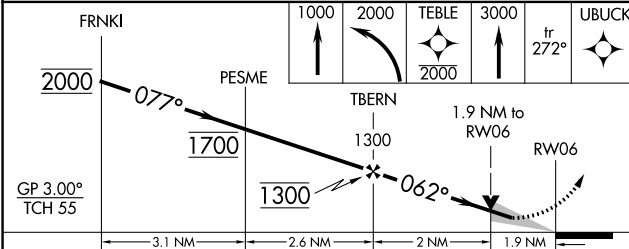
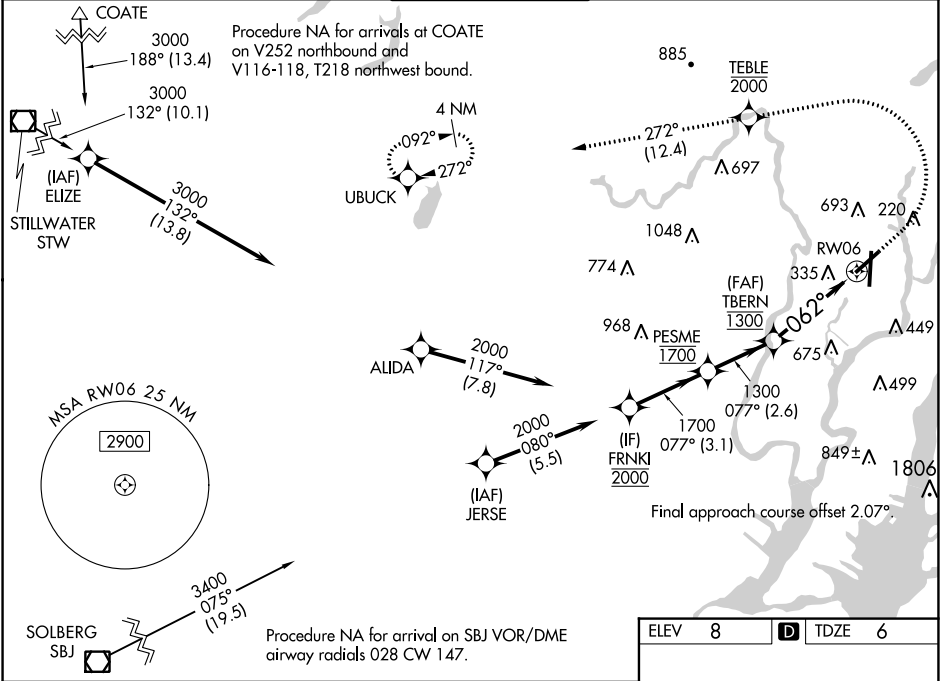
WAAS CH <b>65634</b> <b>W06B</b>	APP CRS <b>062°</b>	Rwy Idg TDZE Apt Elev	<b>6013</b> <b>6</b> <b>8</b>
--	------------------------	-----------------------------	-------------------------------------

# RNAV (GPS) X RWY 6

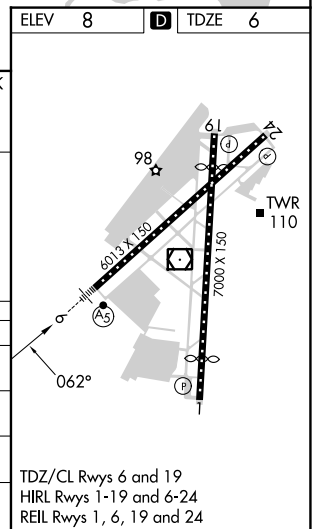
TETERBORO (TEB)

RNP APCH - GPS. RADAR required.	MALSR	MISSED APPROACH: Climb to 1000, then climbing left turn to 2000 direct TEBLE, cross TEBLE at or below 2000, then climb to 3000 on track 272° to UBUCK and hold.
▼ Circling NA for Cats B, C and D northwest of Rws 6 and 19. For uncompensated Baro-VNAV systems, LNAV/VNAV NA below -13°C or above 54°C. For inop ALS, increase LPV all Cats visibility to 1 $\frac{1}{8}$ SM, and LNAV/VNAV all Cats visibility to 1 $\frac{1}{8}$ SM.		

D-ATIS <b>114.2 132.85</b>	NEW YORK APP CON <b>127.6 379.9</b>	TETERBORO TOWER <b>119.5</b>	GND CON <b>121.9</b>	CLNC DEL <b>128.05</b>	CPDLC
-------------------------------	--	---------------------------------	-------------------------	---------------------------	-------



CATEGORY	A	B	C	D
LPV DA		459/45	453 (500- $\frac{7}{8}$ )	
LNAV/VNAV DA		672-1 $\frac{1}{2}$	666 (700-1 $\frac{1}{2}$ )	
LNAV MDA	660/24	654 (700- $\frac{1}{2}$ )	660-1 $\frac{3}{8}$	654 (700-1 $\frac{3}{8}$ )
CIRCLING	760-1	752 (800-1)	820-2 $\frac{1}{2}$ 812 (900-2 $\frac{1}{2}$ )	1040-3 1032 (1100-3)



NE-2, 22 FEB 2024 to 21 MAR 2024

NE-2, 22 FEB 2024 to 21 MAR 2024