

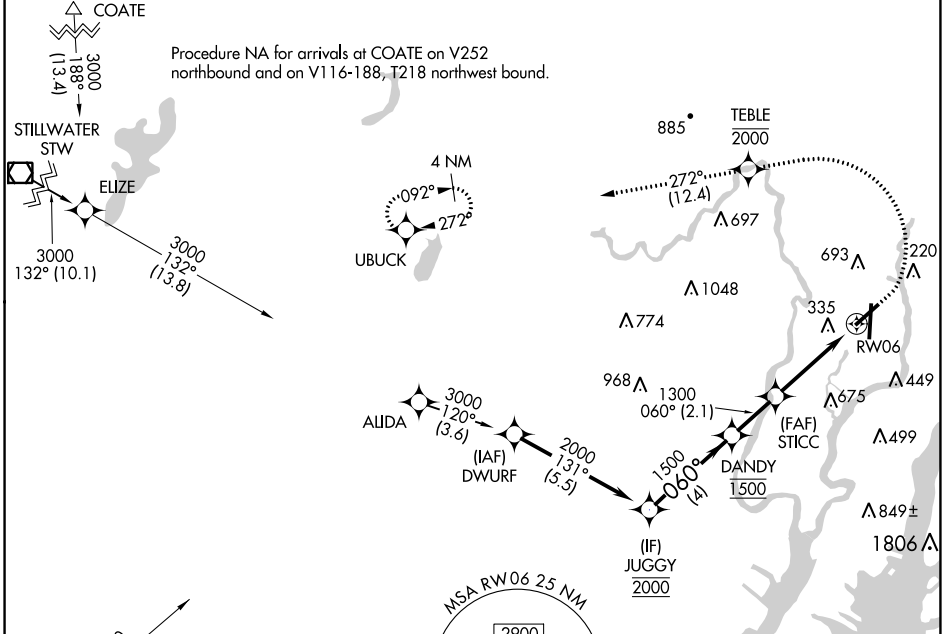
WAAS CH 65707 W06A	APP CRS 060°	Rwy Idg TDZE Apt Elev	6013 6 8
--	------------------------	-----------------------------	-------------------------------------

RNAV (GPS) Y RWY 6

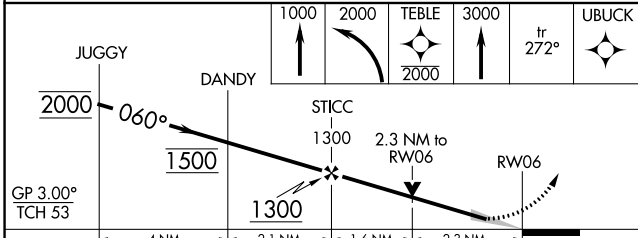
TETERBORO (TEB)

RNP APCH - GPS. RADAR required.	MALSR 	MISSED APPROACH: Climb to 1000, then climbing left turn to 2000 direct TEBLE, cross TEBLE at or below 2000, then climb to 3000 on track 272° to UBUCK and hold.
<p>Procedure NA for Cats B, C, and D northwest of Rwy 6 and 19. For inop ALS, increase LPV all Cats visibility to RVR 5500 and increase LNAV Cats C/D visibility to 2½ SM.</p>		

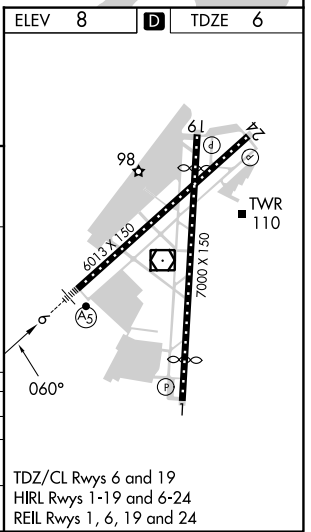
D-ATIS 114.2 132.85	NEW YORK APP CON 127.6 379.9	TETERBORO TOWER 119.5	GND CON 121.9	CLNC DEL 128.05	CPDLC
-------------------------------	--	---------------------------------	-------------------------	---------------------------	-------



ELEV 8	D	TDZE 6
--------	----------	--------



CATEGORY	A	B	C	D
LPV DA		369/35	363 (400-5/8)	
LNAV MDA	800/24 794 (800-1/2)	800/40 794 (800-3/4)	800-1 3/4 794 (800-1 3/4)	
CIRCLING	800-1 792 (800-1)	800-1 1/4 792 (800-1 1/4)	820-2 1/2 812 (900-2 1/2)	1040-3 1032 (1100-3)



NE-2, 22 FEB 2024 to 21 MAR 2024

NE-2, 22 FEB 2024 to 21 MAR 2024