

ILS Z or LOC/DME Z RWY 13R

LOC/DME I-NQI 110.9 Chan 46	APCH CRS 130°	Rwy Idg TDZE Arprt Elev 8000 50 50
-------------------------------------------------	-------------------------	------------------------------------------------------------------------

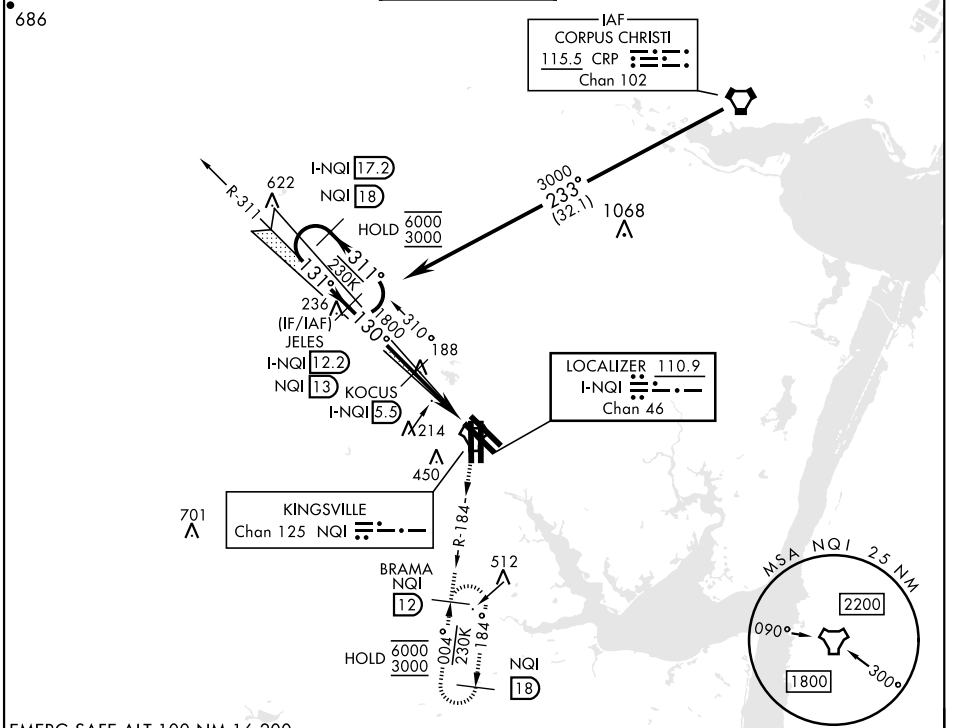
AL-918 [USN]

KINGSVILLE NAS (KNQI)

TACAN required.

MISSED APPROACH: Climbing right turn to 3000 and intercept NQI TACAN R-184 to BRAMA and hold.

ATIS ★ 282.25	APP CON 119.9 290.45	TOWER ★ 124.1 377.05	GND CON 239.05	CLNC DEL 328.4	ASR/ PAR
-------------------------	--------------------------------	--------------------------------	--------------------------	--------------------------	-------------



SC-3, 22 FEB 2024 to 21 MAR 2024

SC-3, 22 FEB 2024 to 21 MAR 2024

EMERG SAFE ALT 100 NM 16,200

I-NQI 17.2 NQI 18 JELES I-NQI 12.2 NQI 13 KOCUS I-NQI 5.9 PEXIE I-NQI 0.7 LOC DME	VGSi and ILS glidepath not coincident (VGSi TCH 34).		3000 NQI R-184	BRAMA NQI 12	ELEV 50 TDZE 50	130° 5.3 NM from FAF																		
	6000 3000	311°	131°	3000	130°	1800	GS 3.00° TCH 50																	
<table border="1"> <thead> <tr> <th>CATEGORY</th> <th>A</th> <th>B</th> <th>C</th> <th>D</th> </tr> </thead> <tbody> <tr> <td>S-ILS 13R</td> <td></td> <td>250-¾</td> <td>200</td> <td>(200-¾)</td> </tr> <tr> <td>S-LOC 13R</td> <td>460-1</td> <td>410 (500-1)</td> <td>460-1½</td> <td>410 (500-1½)</td> </tr> <tr> <td> CIRCLING</td> <td>540-1</td> <td>490 (500-1)</td> <td>710 (800-2)</td> <td>710 (800-2½)</td> </tr> </tbody> </table>	CATEGORY	A	B	C	D	S-ILS 13R		250-¾	200	(200-¾)	S-LOC 13R	460-1	410 (500-1)	460-1½	410 (500-1½)	CIRCLING	540-1	490 (500-1)	710 (800-2)	710 (800-2½)	4.8 NM		0.5	17L 17R 8000 x 128 8000 x 128 8000 x 128 8000 x 128 8000 x 128 8000 x 128 35L 35R (A1)
CATEGORY	A	B	C	D																				
S-ILS 13R		250-¾	200	(200-¾)																				
S-LOC 13R	460-1	410 (500-1)	460-1½	410 (500-1½)																				
CIRCLING	540-1	490 (500-1)	710 (800-2)	710 (800-2½)																				

ILS Z or LOC/DME Z RWY 13R