

KINGSVILLE-THREE DEPARTURE (NQI3•NQI)

KINGSVILLE NAS (KNQI)

AL-918 [USN]

KINGSVILLE, TEXAS

ATIS★ 282.25
 CLNC DEL
 328.4
 GND CON
 239.05
 TOWER ★
 124.1 377.05
 DEP CON
 121.05 266.8

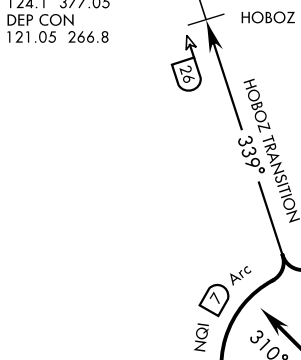
Rwy	Knots	60	120	180	240	300	360
13L/RⓄ	V/V(fpm)	386	772	1158	1544	1930	2316
17L/RⓄ	V/V(fpm)	300	600	900	1200	1500	1800
31L/RⓄ	V/V(fpm)	409	818	1227	1636	2045	2454
35L/RⓄ	V/V(fpm)	551	1102	1653	2204	2755	3306

ATC Minimum Climb Rate

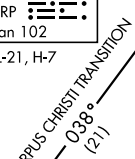
Ⓞ CORPUS CHRISTI transition to 8000

CORPUS CHRISTI
 115.5 CRP

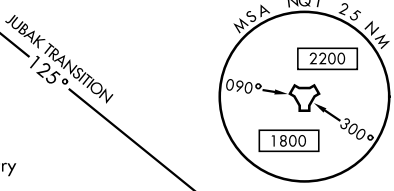
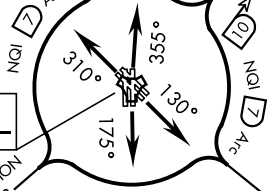
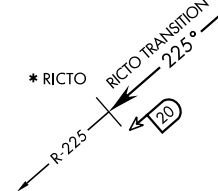
 Chan 102
 L-20, L-21, H-7



JERIR
 8000



KINGSVILLE
 Chan 125 NQI



* Local Military Use only
 for Special Use Airspace entry

EMERG SAFE ALT 100 NM 16,200

DEPARTURE ROUTE DESCRIPTION

- TAKE-OFF RWY 13L/R: Climb via heading 130° to join NQI TACAN 7 DME arc, thence....
- TAKE-OFF RWY 17L/R: Climb via heading 175° to join NQI TACAN 7 DME arc, thence....
- TAKE-OFF RWY 31L/R: Climb via heading 310° to join NQI TACAN 7 DME arc, thence....
- TAKE-OFF RWY 35L/R: Climb via heading 355° to join NQI TACAN 7 DME arc, thence....

CORPUS CHRISTI TRANSITION (NQI3•CRP):

Rwys 13L/R and 17L/R: Turn left to intercept NQI 7 DME arc and arc NE. Turn right to intercept NQI R-038 to cross JERIR at or above 8000. Then on NQI R-038 to CRP VORTAC.
Rwys 31L/R and 35L/R: Turn right to intercept NQI 7 DME arc and arc NE. Turn left to intercept NQI R-038 to cross JERIR at or above 8000. Then on NQI R-038 to CRP VORTAC.

(Continued on next page)

KINGSVILLE-THREE DEPARTURE (NQI3•NQI)

Orig 05NOV20

KINGSVILLE, TEXAS

KINGSVILLE NAS (KNQI)

SC-3, 22 FEB 2024 to 21 MAR 2024

SC-3, 22 FEB 2024 to 21 MAR 2024