

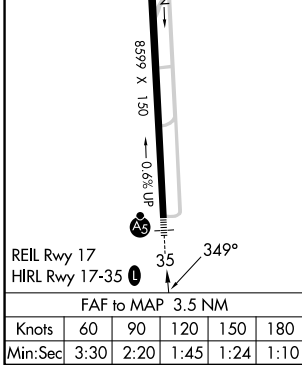
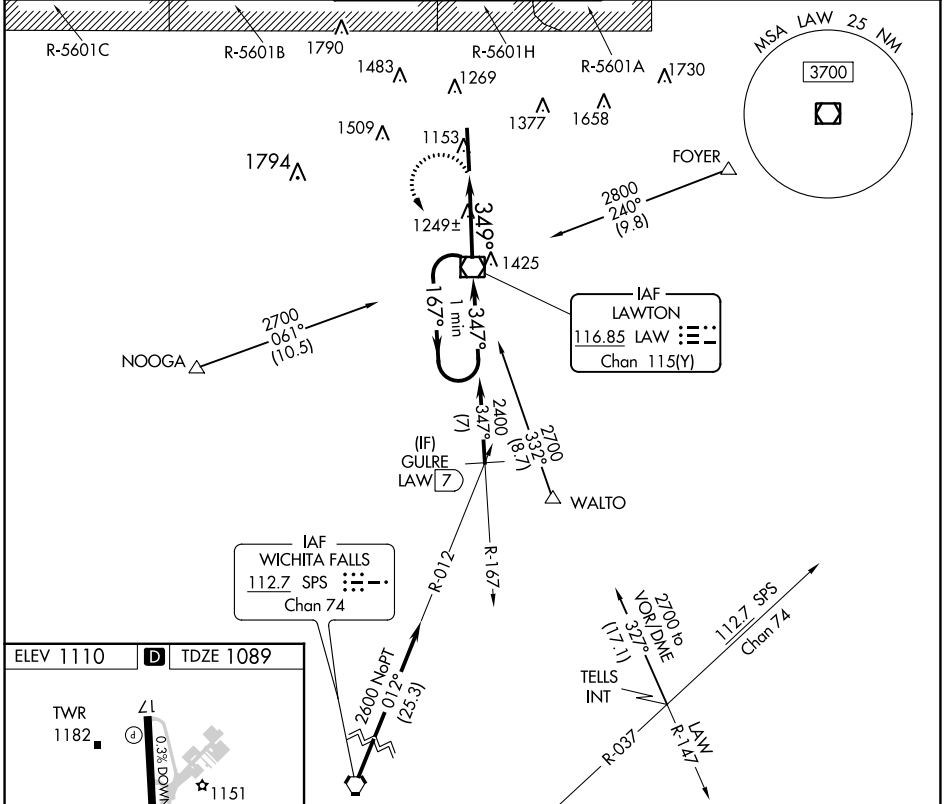
VOR/DME LAW 116.85 Chan 115(Y)	APP CRS 349°	Rwy Idg TDZE Apt Elev	8599 1089 1110
--	------------------------	-----------------------------	---

VOR RWY 35

LAWTON-FORT SILL RGNL (LAW)

For inop ALS, increase Cat C/D visibility to 1½ SM. ASR	MALS 	MISSED APPROACH: Climbing left turn to 2800 direct LAW VOR/DME and hold, continue climb-in-hold to 2800.
--	----------	--

ATIS 120.75	FORT SILL APP CON 120.55 322.4	LAWTON TOWER ★ 119.9(CTAF) 257.8	GND CON 121.9	UNICOM 122.95
-----------------------	--	--	-------------------------	-------------------------



2800	LAW	One Minute Holding Pattern			
1.1 NM	2.4 NM				
CATEGORY	A	B	C	D	
S-35	1500-½	411 (500-½)	1500-¾	411 (500-¾)	
<input checked="" type="checkbox"/> CIRCLING	1620-1	510 (600-1)	1820-2 710 (800-2)	1820-2½ 710 (800-2½)	

SC-1, 22 FEB 2024 to 21 MAR 2024

SC-1, 22 FEB 2024 to 21 MAR 2024