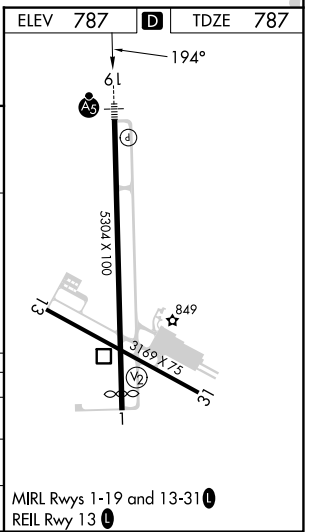
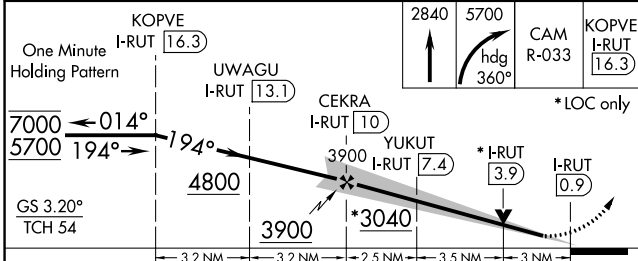
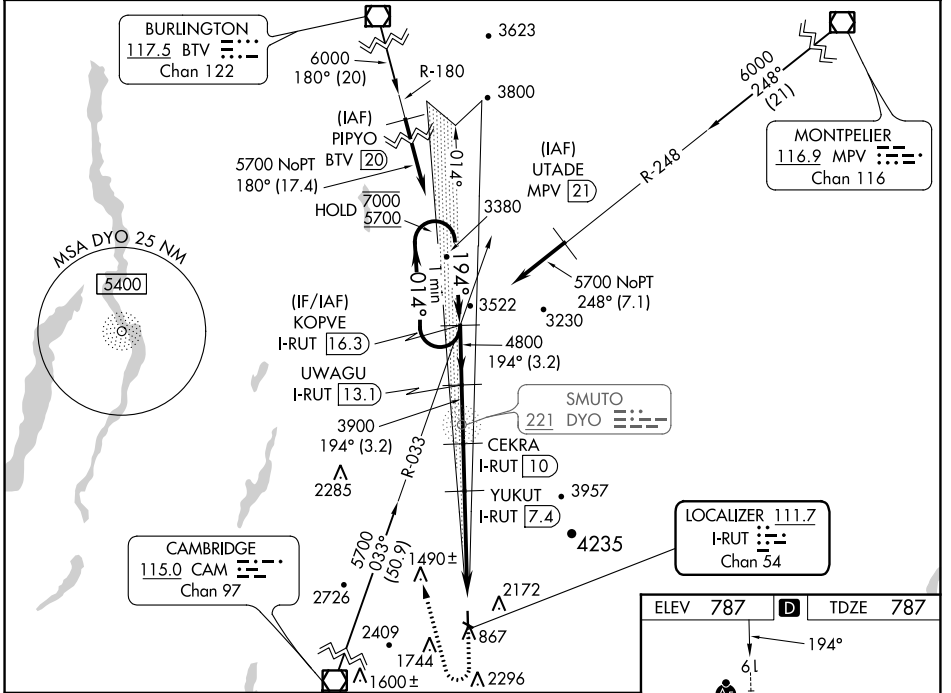


LOC/DME I-RUT <b>111.7</b> Chan <b>54</b>	APP CRS <b>194°</b>	Rwy Idg <b>5003</b> TDZE <b>787</b> Apt Elev <b>787</b>
---	------------------------	---

# ILS Y or LOC Y RWY 19

RUTLAND/SOUTHERN VERMONT RGNL (RUT)

DME required.		MALSR 	MISSED APPROACH: Climb to 2840 then climbing right turn to 5700 on heading 360° and CAM VOR/DME R-033 to KOPVE/I-RUT 16.3 DME and hold.
	Circling to Rwy 13, 31 NA at night. Circling NA northeast of Rws 19 and 31. Inop table does not apply to S-ILS 19 all Cats, S-LOC 19 Cats C/D.		
AWOS-3PT <b>118.375</b>	BOSTON CENTER <b>135.7 282.2</b>	UNICOM <b>122.8 (CTAF) 0</b>	



CATEGORY	A	B	C	D
S-ILS 19	2162-5		1375 (1400-5)	
S-LOC 19	2160-3/4 1373 (1400-3/4)	2160-1 1373 (1400-1)	2160-3	1373 (1400-3)
<b>C</b> CIRCLING	2160-1 1/4 1373 (1400-1 1/4)	2160-1 1/2 1373 (1400-1 1/2)	2520-3 1733 (1800-3)	2760-3 1973 (2000-3)

MRL Rws 1-19 and 13-31 0  
REL Rwy 13 0

NE-1, 22 FEB 2024 to 21 MAR 2024

NE-1, 22 FEB 2024 to 21 MAR 2024