

WAAS CH 93730 W19B	APP CRS 194°	Rwy Idg TDZE Apt Elev	5003 787 787
--	------------------------	-----------------------------	---

RNAV (GPS) Z RWY 19

RUTLAND/SOUTHERN VERMONT RGNL (RUT)

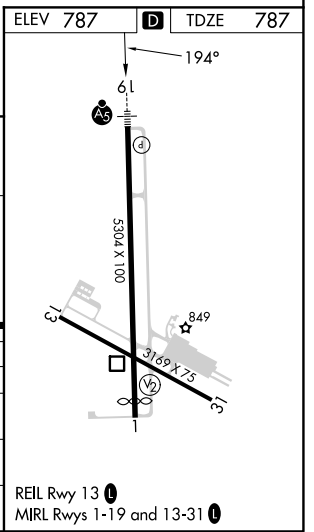
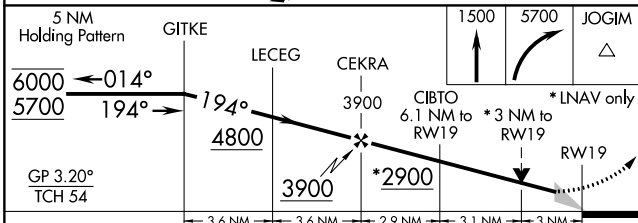
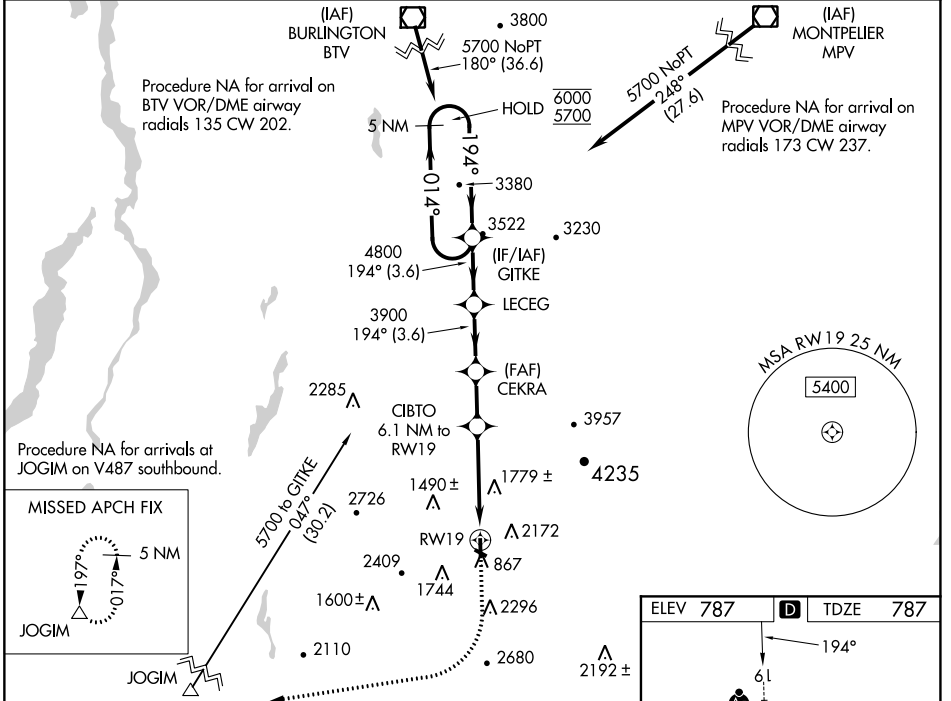
RNP APCH.

⚠ Circling NA northeast of Rwy 19 and 31.
⚠ Circling Rwy 13, 31 NA at night.
 Inop table does not apply to LNAV/VNAV all Cats.
 Baro-VNAV NA. For inop ALS, increase LPV all Cats
 visibility to 1½ miles.

MALSRL

⚠ MISSED APPROACH: Climb to 1500 then climbing
 right turn to 5700 direct JOGIM and hold,
 continue climb-in-hold to 5700.
 † Missed approach requires minimum climb of
 420 feet per NM to 3200; if unable to meet climb
 gradient, see RNAV (GPS) Y Rwy 19.

AWOS-3PT 118.375	BOSTON CENTER 135.7 282.2	UNICOM 122.8 (CTAF)
----------------------------	-------------------------------------	-------------------------------



CATEGORY	A	B	C	D
LPV DA†	1201-¾	414 (500-¾)		NA
LNAV/VNAV DA	2150-5	1363 (1400-5)		NA
LNAV MDA†	1820-¾ 1033 (1100-¾)	1820-1 1033 (1100-1)	1820-2½ 1033 (1100-2½)	NA
CIRCLING	2560-1¼ 1773 (1800-1¼)	2560-1½ 1773 (1800-1½)	2560-3 1773 (1800-3)	NA

NE-1, 22 FEB 2024 to 21 MAR 2024

NE-1, 22 FEB 2024 to 21 MAR 2024