

ATHENS, GEORGIA

AL-983 (FAA)

23054

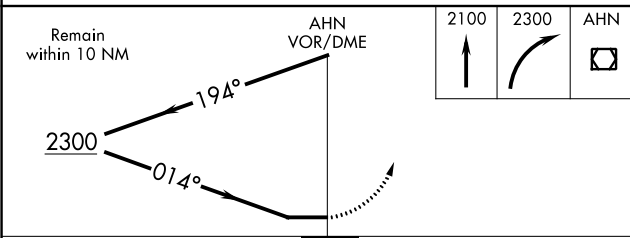
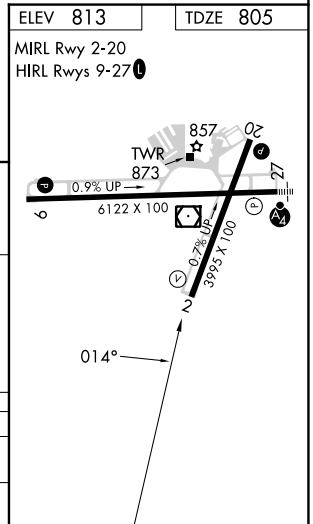
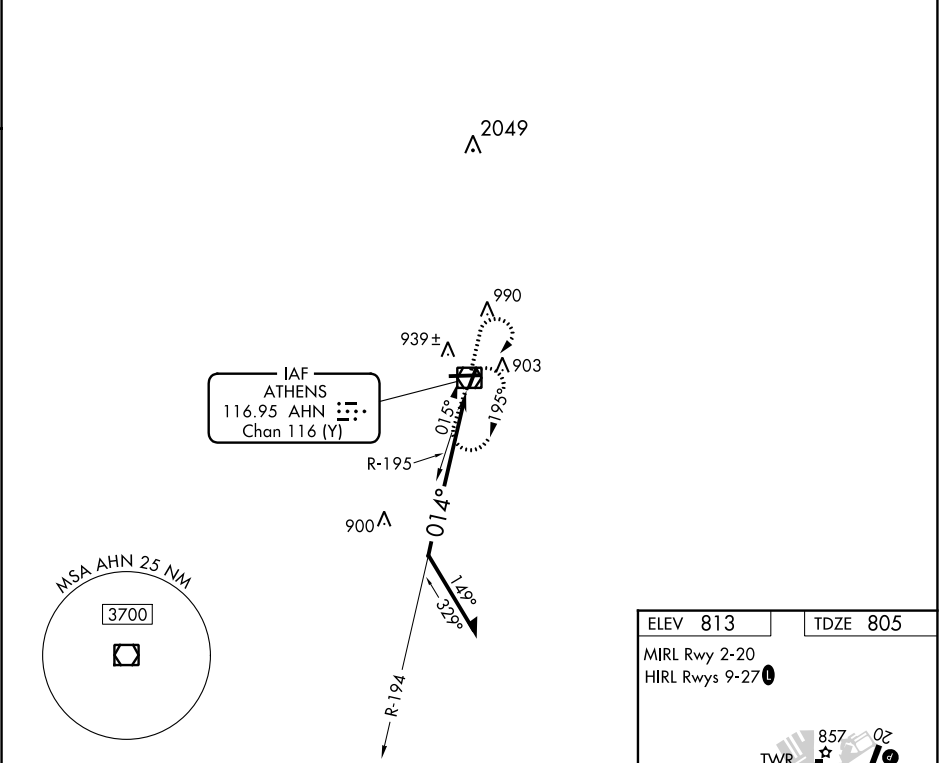
VOR/DME AHN 116.95 Chan 116 (Y)	APP CRS 014°	Rwy ldg 3995 TDZE 805 Apt Elev 813
---	------------------------	---

VOR RWY 2
ATHENS/BEN EPPS (AHN)

▽ When VGSI inop, Circling Rwy 20 NA at night. When VGSI inop, Straight-in/Circling Rwy 2 procedure NA at night. Visibility reduction by helicopters NA. When local altimeter setting not received, use Winder altimeter setting and increase all MDA 60 feet; increase S-2 Cat D and Circling Cat D visibilities ¼ SM.

MISSED APPROACH: Climb to 2100 then climbing right turn to 2300 direct AHN VOR/DME and hold.

ASOS 132.875	ATLANTA APP CON ★ 132.475 291.1	ATHENS TOWER ★ 126.3 (CTAF) 0 338.275	GND CON 121.8	CLNC DEL 121.8	CLNC DEL 132.475 291.1 (when twr closed)	UNICOM 122.95
------------------------	---	--	-------------------------	--------------------------	---	-------------------------



CATEGORY	A	B	C	D
S-2	1220-1	415 (500-1)	1220-1¼	415 (500-1¼)
C CIRCLING	1260-1 447 (500-1)	1280-1 467 (500-1)	1320-1½ 507 (600-1½)	1460-2 647 (700-2)

ATHENS, GEORGIA
Amdt 11D 27FEB20

33°57'N-83°20'W

ATHENS/BEN EPPS (AHN)
VOR RWY 2

SE-4, 22 FEB 2024 to 21 MAR 2024

SE-4, 22 FEB 2024 to 21 MAR 2024