

WAAS CH <b>78001</b> W32A	APP CRS <b>317°</b>	Rwy Idg <b>7120</b> TDZE <b>102</b> Apt Elev <b>107</b>
---------------------------------	------------------------	---

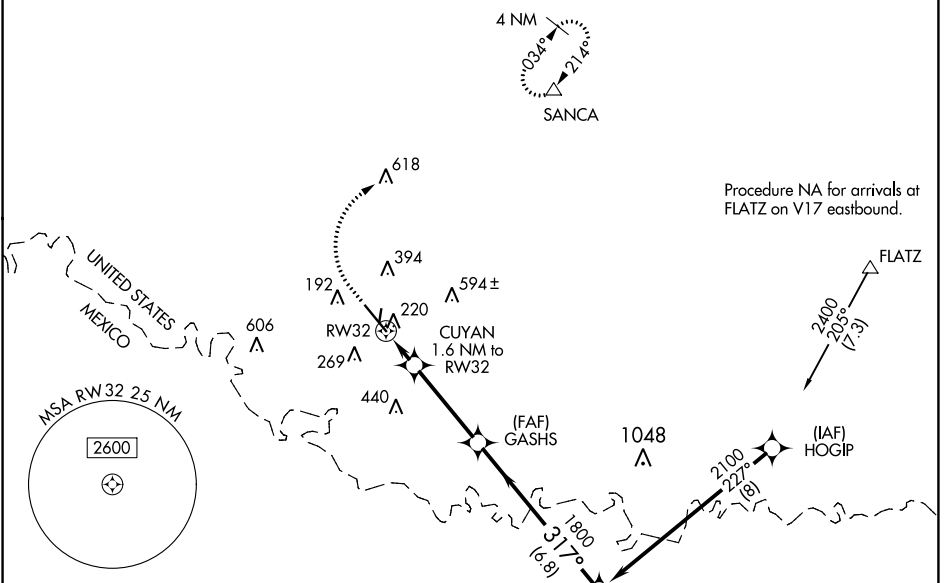
# RNAV (GPS) RWY 32

MC ALLEN INTL (MFE)

**⚠** For uncompensated Baro-VNAV systems, LNAV/VNAV NA below 1°C (34°F) or above 54°C (130°F). Circling NA northeast of Rwy 14-32. DME/DME RNP-0.3 NA.  
**⚠** When local altimeter setting not received, use Weslaco altimeter setting: increase all DA 39 feet and LNAV/VNAV all Cat visibility ¼ mile; increase all MDA 40 feet and LNAV Cat C/D visibility ½ mile. Baro-VNAV and VDP NA when using Weslaco altimeter setting.

MISSED APPROACH: Climb to 800 then climbing right turn to 2000 direct SANCA and hold.

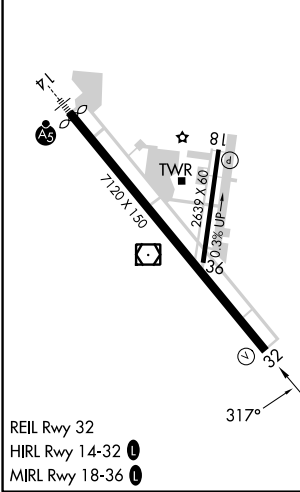
ATIS <b>128.5</b>	VALLEY APP CON <b>126.55 377.2</b>	MC ALLEN TOWER * <b>118.5 (CTAF) 0 256.9</b>	GND CON <b>121.8</b>	UNICOM <b>122.95</b>
----------------------	---------------------------------------	---	-------------------------	-------------------------



SC-3, 22 FEB 2024 to 21 MAR 2024

SC-3, 22 FEB 2024 to 21 MAR 2024

ELEV 107	<b>D</b> TDZE 102
----------	-------------------



800	2000	SANCA	VGSJ and RNAV glidepath not coincident (VGSJ Angle 3.00/TCH 53).			
*LNAV only		GASHS		FOVUD		
RW32		CUYAN 1.6 NM to RW32		2100		
*1 NM to RW32		1800		317°		
*660		1800		GP 3.00° TCH 50		
1 NM		0.6		3.6 NM		
				6.8 NM		
CATEGORY	A	B	C	D		
LPV DA	DA	302-¾	200 (200-¾)			
LNAV/VNAV DA	DA	391-7/8	289 (300-7/8)			
LNAV MDA		480-1	378 (400-1)			
<b>C</b> CIRCLING	580-1	473 (500-1)	580-1½ 473 (500-1½)	800-2¼	693 (700-2¼)	