

VOR/DME MFE 117.2 Chan 119	APP CRS 134°	Rwy Idg 6983 TDZE 107 Apt Elev 107
--	------------------------	---

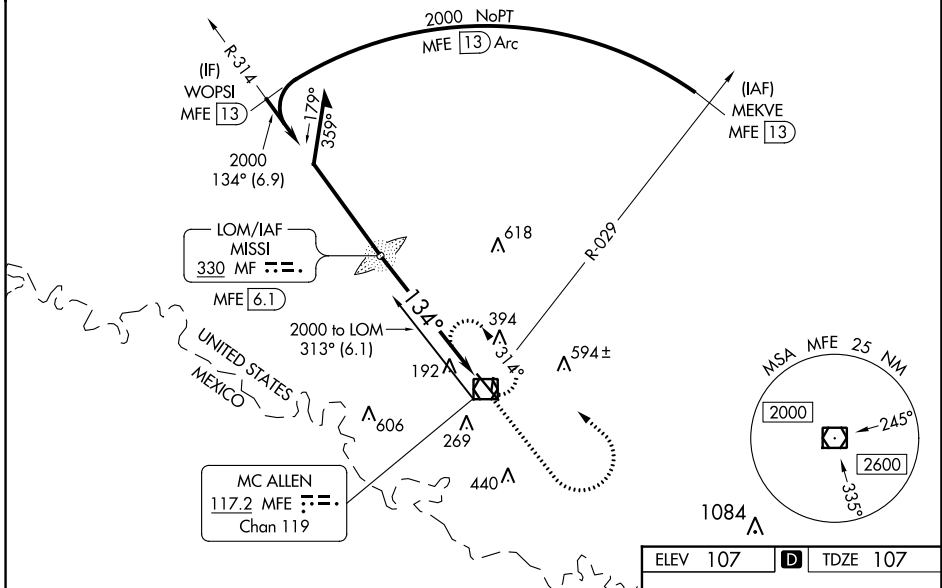
VOR RWY 14

MC ALLEN INTL (MFE)

<p>⚠ Circling NA northeast of Rwy 14-32. ADF or DME required. For nop MALSR, increase S-14 Cat C/D visibility to 1 1/8 mile. When local altimeter setting not received, use Weslaco altimeter setting and increase all MDA 40 feet and S-14 Cat C/D and Circling Cat C visibility 1/8 mile. VDP NA when using Weslaco altimeter setting.</p>	<p>MALSR</p>	<p>MISSED APPROACH: Climb to 1000 then climbing left turn to 2000 direct MFE VOR/DME and hold.</p>
---	--------------	--

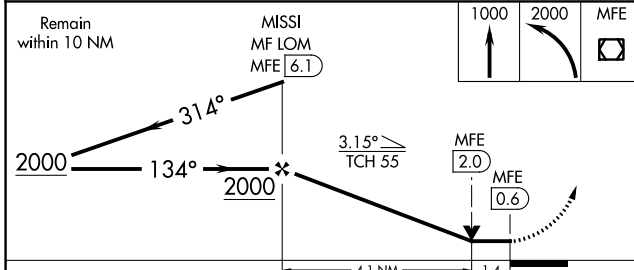
ATIS 128.5	VALLEY APP CON 126.55 377.2	MC ALLEN TOWER ★ 118.5 (CTAF) 256.9	GND CON 121.8	UNICOM 122.95
----------------------	---------------------------------------	---	-------------------------	-------------------------

ADF or DME REQUIRED

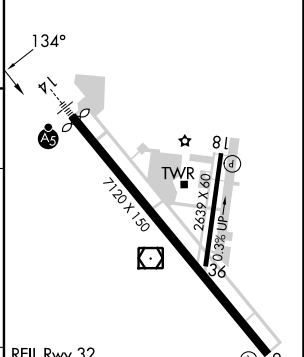


SC-3, 22 FEB 2024 to 21 MAR 2024

SC-3, 22 FEB 2024 to 21 MAR 2024



ELEV 107	D	TDZE 107
----------	----------	----------



CATEGORY	A	B	C	D
S-14	620-1/2 513 (600-1/2)		620-1 513 (600-1)	
C CIRCLING	620-1 513 (600-1)		620-1 1/2 513 (600-1/2)	800-2 1/4 693 (700-2 1/4)

FAF to MAP 5.5 NM					
Knots	60	90	120	150	180
Min:Sec	5:30	3:40	2:45	2:12	1:50