

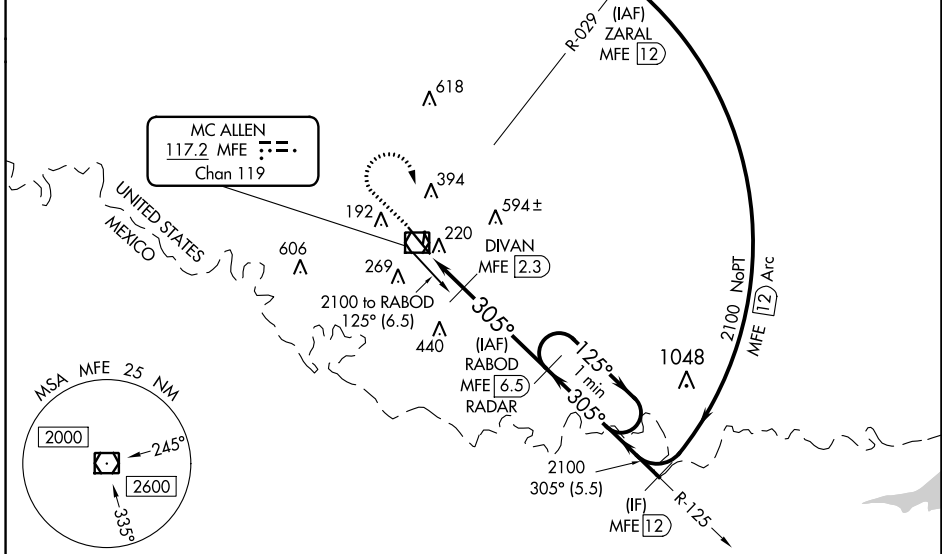
VOR/DME MFE 117.2 Chan 119	APP CRS 305°	Rwy Idg 7120 TDZE 102 Apt Elev 107
--	------------------------	---

VOR RWY 32

MC ALLEN INTL (MFE)

<p>⚠ Circling NA northeast of Rwy 14-32. When local altimeter setting not received, use Weslaco altimeter setting and increase all MDA 40 feet and S-32 Cat C/D and Circling Cat C visibility 1/8 mile, increase DIVAN Fix Minimums S-32 Cat C/D visibility 1/8 mile. VDP NA when using Weslaco altimeter setting.</p>		<p>MISSED APPROACH: Climb to 900 then climbing right turn to 2100 direct MFE VOR/DME.</p>		
ATIS 128.5	VALLEY APP CON 126.55 377.2	MC ALLEN TOWER* 118.5 (CTAF) 256.9	GND CON 121.8	UNICOM 122.95

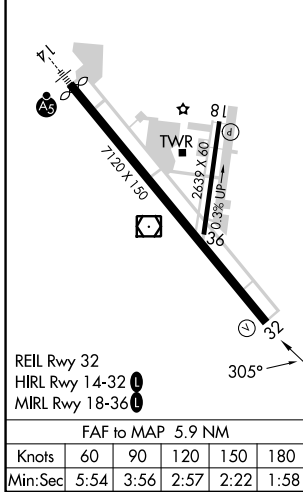
DME or RADAR REQUIRED



SC-3, 22 FEB 2024 to 21 MAR 2024

SC-3, 22 FEB 2024 to 21 MAR 2024

ELEV 107	D	TDZE 102
----------	----------	----------



900	2100	MFE	RABOD MFE 6.5 RADAR	One Minute Holding Pattern
MFE VOR/DME		MFE 1.6	DIVAN MFE 2.3	125° → 2100
MFE 0.6		*660		← 305°
1 NM		0.7 NM	4.2 NM	3.09° TCH 52
*700 when using Weslaco altimeter setting.				
CATEGORY	A	B	C	D
S-32	660-1	558 (600-1)	660-1 1/8	558 (600-1 1/8)
C CIRCLING	660-1	553 (600-1)	660-1 1/8	800-2 1/4
			553 (600-1 1/8)	693 (700-2 1/4)
DIVAN FIX MINIMUMS				
S-32	480-1 378 (400-1)			
C CIRCLING	580-1	473 (500-1)	580-1 1/2	800-2 1/4
			473 (500-1 1/2)	693 (700-2 1/4)