

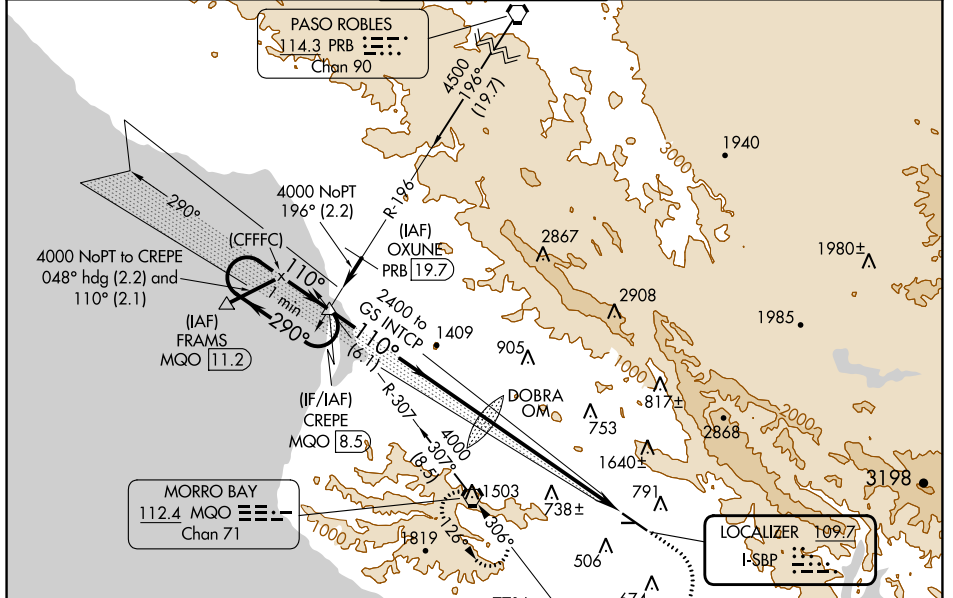
LOC I-SBP 109.7	APP CRS 110°	Rwy ldg TDZE Apt Elev	5300 198 212
---------------------------	------------------------	-----------------------------	---

ILS RWY 11

SLO COUNTY (SBP)

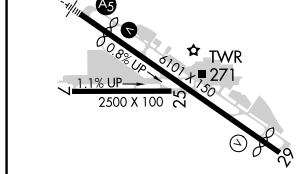
	MALS	MISSED APPROACH: Climb to 900 then climbing right turn to 3300 on heading 175° and on MQO VORTAC R-126 to MQO VORTAC and hold, continue climb-in-hold to 3300.

ATIS* 120.6	SANTA BARBARA APP CON* 127.725 244.575	SAN LUIS TOWER* 124.0 (CTAF) 379.9	GND CON 121.6	UNICOM 122.95
-----------------------	--	--	-------------------------	-------------------------



When GS not used, use LOC RWY 11 procedure.

ELEV 212	D	TDZE 198
----------	----------	----------



One Minute Holding Pattern	CREPE INT MQO 8.5	900	3300	MQO R-126	MQO
				hdg 175°	
4000	← 290°	110° →	110°	DOBRA OM 2186	
GS 3.00° TCH 49		2400			
		6.9 NM	6.1 NM		
CATEGORY	A	B	C	D	
S-ILS 11		398-1/2	200 (200-1/2)		

REIL Rwy 29
HIRL Rwy 11-29

SW-3, 22 FEB 2024 to 21 MAR 2024

SW-3, 22 FEB 2024 to 21 MAR 2024