

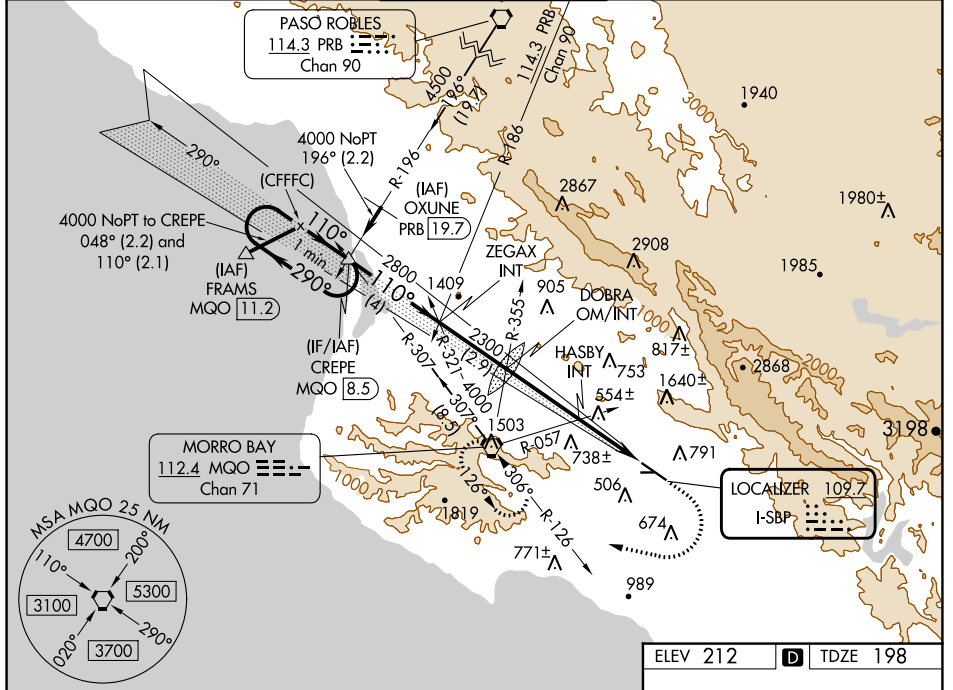
LOC I-SBP <b>109.7</b>	APP CRS <b>110°</b>	Rwy ldg TDZE Apt Elev <b>5300</b> <b>198</b> <b>212</b>
---------------------------	------------------------	--

# LOC RWY 11

SLO COUNTY (SBP)

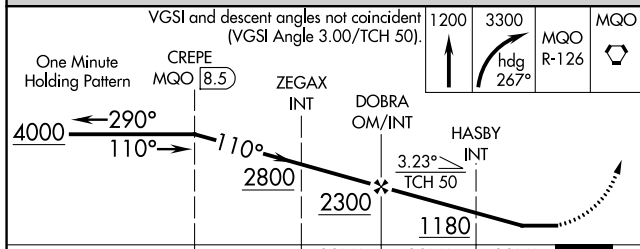
	Circling NA north of Rwy 11-29.	MALS R	MISSED APPROACH: Climb to 1200 then climbing right turn to 3300 on heading 267° and on MQO VORTAC R-126 to MQO VORTAC and hold.	

ATIS* <b>120.6</b>	SANTA BARBARA APP CON* <b>127.725 244.575</b>	SAN LUIS TOWER* <b>124.0 (CTAF) 379.9</b>	GND CON <b>121.6</b>	UNICOM <b>122.95</b>
-----------------------	--	--	-------------------------	-------------------------

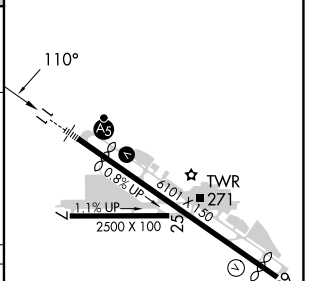


SW-3, 22 FEB 2024 to 21 MAR 2024

SW-3, 22 FEB 2024 to 21 MAR 2024



ELEV 212	<b>D</b> TDZE 198
----------	-------------------



CATEGORY	A	B	C	D
S-11	1180- <sup>3</sup> / <sub>4</sub> 982 (1000- <sup>3</sup> / <sub>4</sub> )	1180-1 982 (1000-1)	1180-2 <sup>1</sup> / <sub>2</sub>	982 (1000-2 <sup>1</sup> / <sub>2</sub> )
CIRCLING	1180-1 <sup>1</sup> / <sub>4</sub> 968 (1000-1 <sup>1</sup> / <sub>4</sub> )	1220-1 <sup>1</sup> / <sub>2</sub> 1008 (1100-1 <sup>1</sup> / <sub>2</sub> )	1460-3 1248 (1300-3)	1560-3 1348 (1400-3)
HASBY INT MINIMUMS (DUAL VOR RECEIVERS REQUIRED)				
S-11	760- <sup>1</sup> / <sub>2</sub>	562 (600- <sup>1</sup> / <sub>2</sub> )	760-1 <sup>1</sup> / <sub>4</sub>	562 (600-1 <sup>1</sup> / <sub>4</sub> )
CIRCLING	840-1 628 (700-1)	1220-1 <sup>1</sup> / <sub>2</sub> 1008 (1100-1 <sup>1</sup> / <sub>2</sub> )	1460-3 1248 (1300-3)	1560-3 1348 (1400-3)

REIL Rwy 29	HIRL Rwy 11-29				
FAF to MAP 6.1 NM					
Knots	60	90	120	150	180
Min:Sec	6:06	4:04	3:03	2:26	2:02