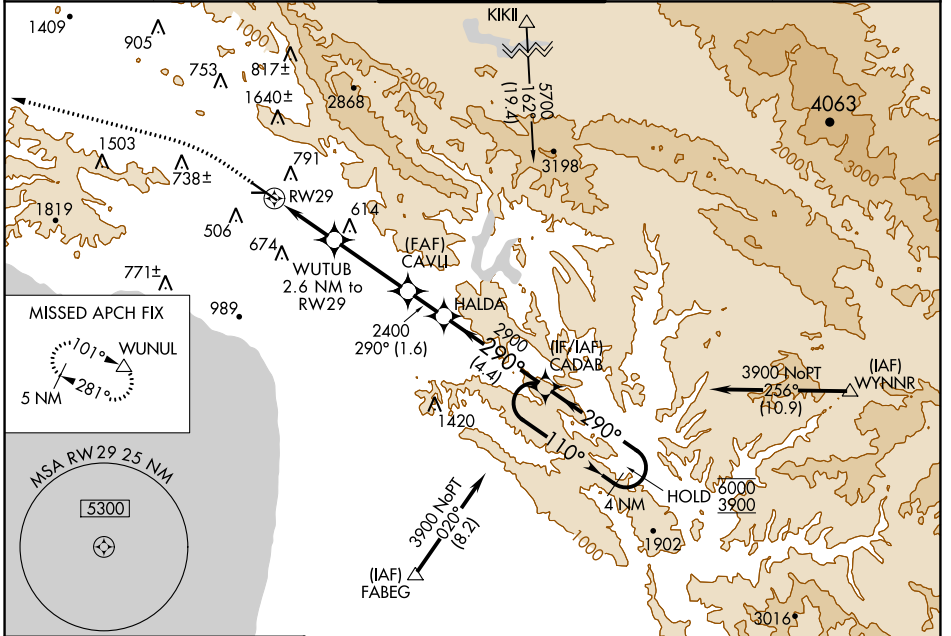


WAAS CH <b>53443</b>	APP CRS <b>290°</b>	Rwy Idg TDZE Apt Elev	<b>5600</b> <b>212</b> <b>212</b>
<b>W29A</b>			

# RNAV (GPS) RWY 29

SLO COUNTY (SBP)

<b>RNP APCH</b> ⚠ Circling to Rwy 25 NA at night. Circling NA north of Rwy 11-29. ⚠ Rwy 29 helicopter visibility reduction below 3/4 SM NA. For uncompensated Baro-VNAV systems, LNAV/VNAV NA below 0° C or above 52° C.		MISSED APPROACH: Climb to 1100 then climbing left turn to 4100 direct WUNUL and hold, continue climb-in-hold to 4100.		
ATIS* <b>120.6</b>	SANTA BARBARA APP CON* <b>127.725 244.575</b>	SAN LUIS TOWER* <b>124.0 (CTAF) 0 379.9</b>	GND CON <b>121.6</b>	UNICOM <b>122.95</b>



ELEV 212	<b>D</b>	TDZE 212
----------	----------	----------

Procedure NA for arrivals at FABEG on V27, T261 southeast bound.

	1100 ↑ 4100 ↙ WUNUL △	4 NM Holding Pattern			
	*LNAV only WUTUB 2.6 NM to RWY 29 RWY 29 HALDA CAVLI CADAB 290° 110° → 6000 ← 290° 3900 GP 3.45° TCH 52	2.6 NM 3.2 NM 1.6 NM 4.4 NM			
CATEGORY LPV DA LNAV/VNAV DA LNAV MDA CIRCLING	A 788 (800-1) 788 (800-1) 1000-1 788 (800-1)	B 831-1 3/4 835-1 3/4 1000-1 1/4 788 (800-1 1/4) 1220-1 1/2 1008 (1100-1 1/2)	C 619 (700-1 3/4) 623 (700-1 3/4) 1000-2 1/2 1460-3 1248 (1300-3)	D 788 (800-2 1/2) 1560-3 1348 (1400-3)	

SW-3, 22 FEB 2024 to 21 MAR 2024

SW-3, 22 FEB 2024 to 21 MAR 2024