

VORTAC MQO 112.4 Chan 71	APP CRS 084°	Rwy Idg TDZE Apt Elev	N/A N/A 212
---------------------------------------	------------------------	-----------------------------	--

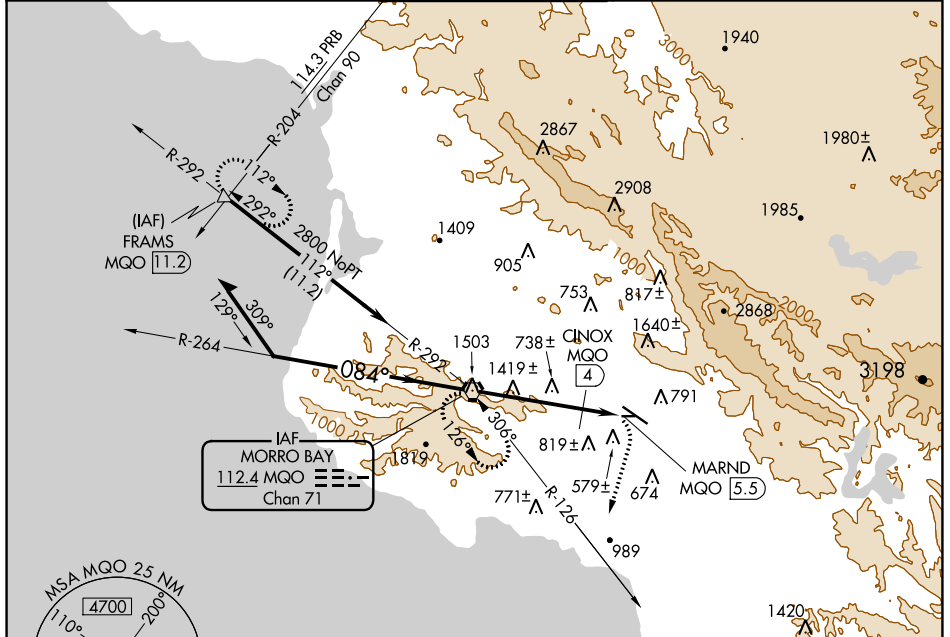
VOR or TACAN-A

SLO COUNTY (SBP)

⚠ Circling NA north of Rwy 11-29.

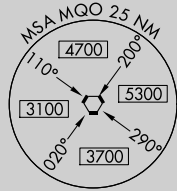
MISSED APPROACH: Climbing right turn to 3100 via heading 175° and MQO R-126 to MQO VORTAC and hold. (TACAN Aircraft continue climb to 4000 via MQO R-292 to FRAMS 11.2 DME and hold east, right turns, 292° inbound.)

ATIS★ 120.6	SANTA BARBARA APP CON★ 127.725 244.575	SAN LUIS TOWER★ 124.0 (CTAF) 0 379.9	GND CON 121.6	UNICOM 122.95
-----------------------	--	--	-------------------------	-------------------------

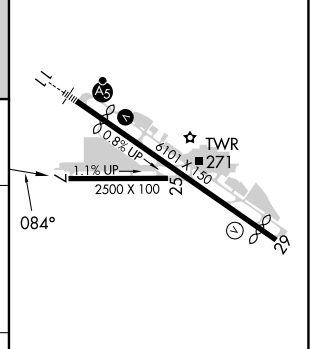
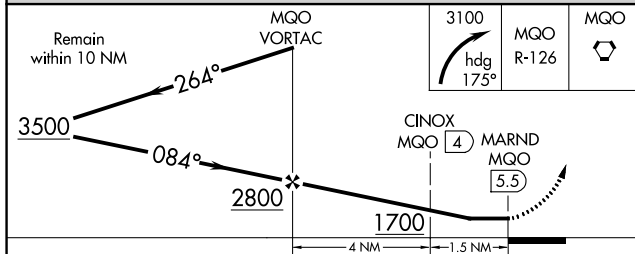


SW-3, 22 FEB 2024 to 21 MAR 2024

SW-3, 22 FEB 2024 to 21 MAR 2024



ELEV 212 **D**



CATEGORY	A	B	C	D	HIRL Rwy 11-29 Ⓛ REIL Rwy 29 Ⓛ
CIRCLING	1700-1¼ 1488 (1500-1¼)	1700-1½ 1488 (1500-1½)	1700-3	1488 (1500-3)	
TACAN OR DME MINIMA					
CIRCLING	1120-1¼ 908 (1000-1¼)	1220-1½ 1008 (1100-1½)	1460-3 1248 (1300-3)	1560-3 1348 (1400-3)	FAF to MAP 5.5 NM
				Knots	60 90 120 150 180
				Min:Sec	5:30 3:40 2:45 2:12 1:50