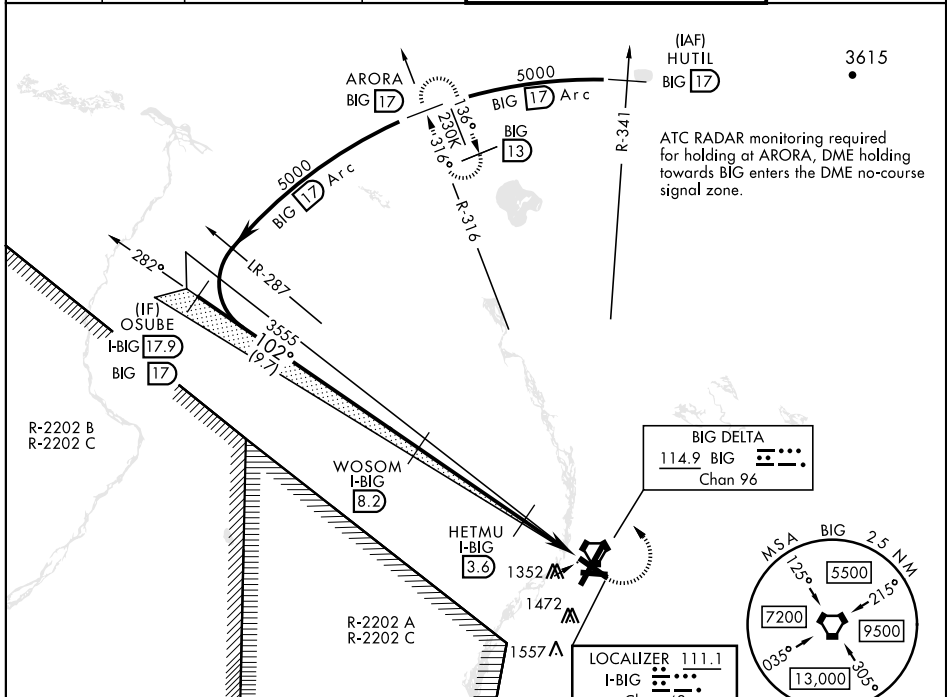


# ILS or LOC/DME RWY 10

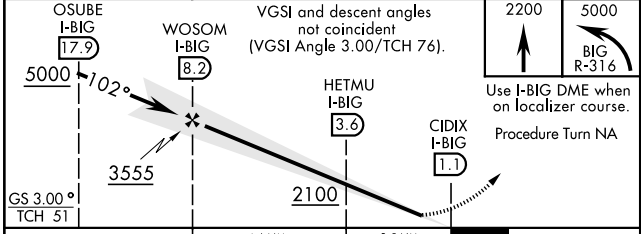
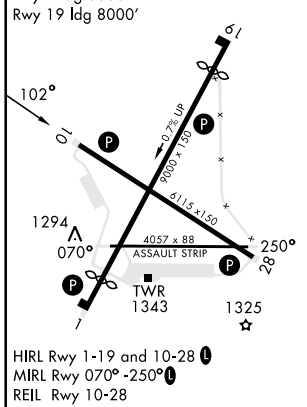
LOC/DME I-BIG <b>111.1</b> Chan <b>48</b>	APCH CRS <b>102°</b>	Rwy ldg <b>6115</b> TDZE <b>1253</b> Arpt Elev <b>1285</b>	AL-1218 [USA]	ALLEN AAF (PABI)
---	-------------------------	--	---------------	------------------

DME required		MISSED APPROACH: Climb to 2200 then climbing left turn to 5000 via BIG R-316 to ARORA/BIG 17 DME and hold.		
* Circling not authorized East of Rwy 1-19.				

ATIS <b>132.075</b>	ASOS <b>135.65</b>	ANCHORAGE CENTER <b>135.3 322.5</b>	CTAF <b>122.90</b>	TOWER ★ <b>119.8 235.775 40.8 (E) FM</b>	GND CON <b>118.225 251.05</b>
------------------------	-----------------------	--	-----------------------	---	----------------------------------



ELEV <b>1285</b>	TDZE <b>1253</b>
------------------	------------------



OSUBE I-BIG <b>17.9</b>	WOSOM I-BIG <b>8.2</b>	HETMU I-BIG <b>3.6</b>	CIDIX I-BIG <b>1.1</b>	
5000	3555	2100		
GS 3.00°	TCH 51	4.6 NM	2.5 NM	
2200	5000			
			BIG R-316	
Use I-BIG DME when on localizer course.				
Procedure Turn NA				
CATEGORY	A	B	C	D
S-ILS 10	1453-¾ 200 (200-¾)			
S-LOC 10	1620-1 367 (400-1)			
CIRCLING*	1740-1 455 (500-1)	1780-1 495 (500-1)	1860-1½ 575 (600-1½)	2040-2½ 755 (800-2½)

# ILS or LOC/DME RWY 10

AK, 25 JAN 2024 to 21 MAR 2024

AK, 25 JAN 2024 to 21 MAR 2024