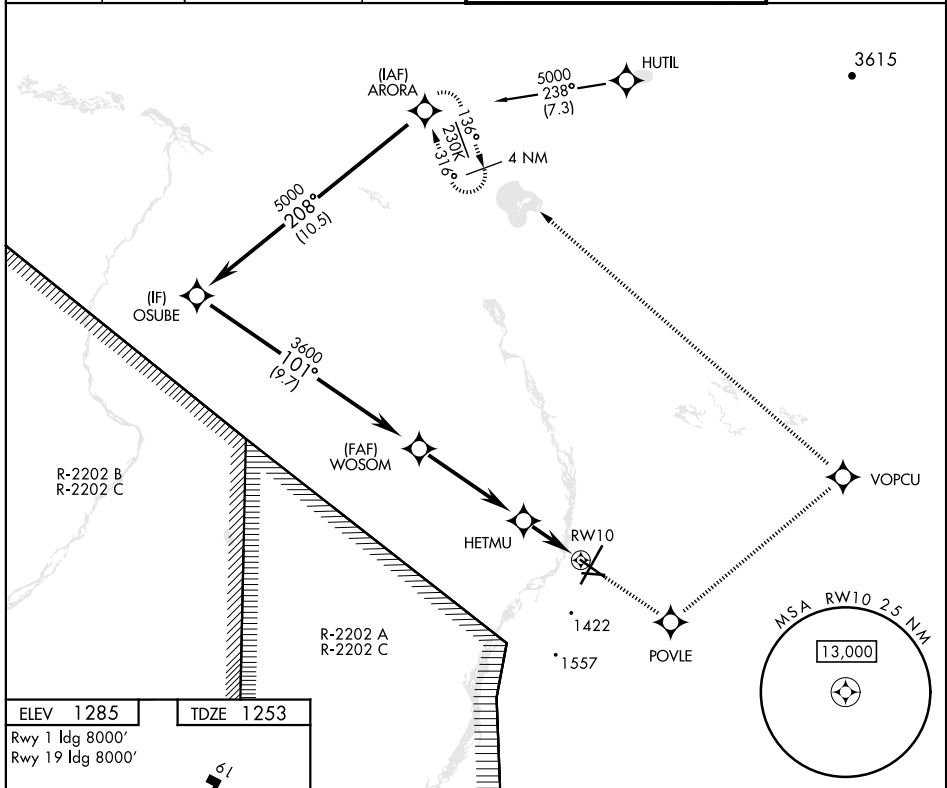


RNAV (GPS) RWY 10

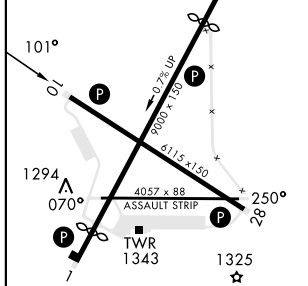
APCH CRS 101°	Rwy Idg 6115	TDZE 1253	Arprt Elev 1285	AL-1218 [USA]	ALLEN AAF (PABI)
RNP APCH-GPS				MISSED APPROACH: Climb to 5000 direct POVLE, and via 027° track to VOPCU, left turn via 289° track to ARORA and hold.	
▼ * Circling not authorized East of Rwy 1-19.					
ATIS 132.075	ASOS 135.65	ANCHORAGE CENTER 135.3 322.5	CTAF 122.9 0	TOWER ★ 119.8 235.775 40.8 (E) FM	GND CON 118.225 251.05



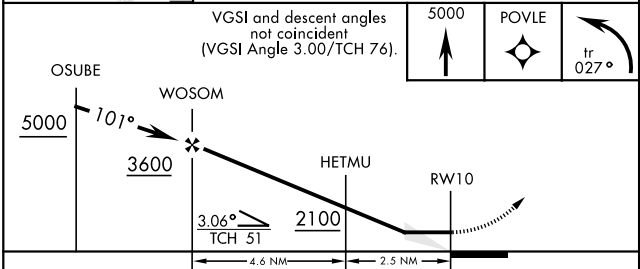
AK, 25 JAN 2024 to 21 MAR 2024

AK, 25 JAN 2024 to 21 MAR 2024

ELEV 1285	TDZE 1253
Rwy 1 Idg 8000'	
Rwy 19 Idg 8000'	



HIRL Rwy 1-19 and 10-28 **0**
 MIRL Rwy 070°-250° **0**
 REIL Rwy 10-28



CATEGORY	A	B	C	D
LNAV MDA	1640-1	387 (400-1)	1640-1½	387 (400-1½)
C CIRCLING*	1740-1	1780-1	1860-1½	2040-2½
	455 (500-1)	495 (500-1)	575 (600-1½)	755 (800-2½)

RNAV (GPS) RWY 10