

DELTA JUNCTION/FORT GREELY, ALASKA

# RNAV (GPS) RWY 19

APCH CRS	Rwy ldg	8000
187°	TDZE	1239
	Arprt Elev	1285

AL-1218 [USA]

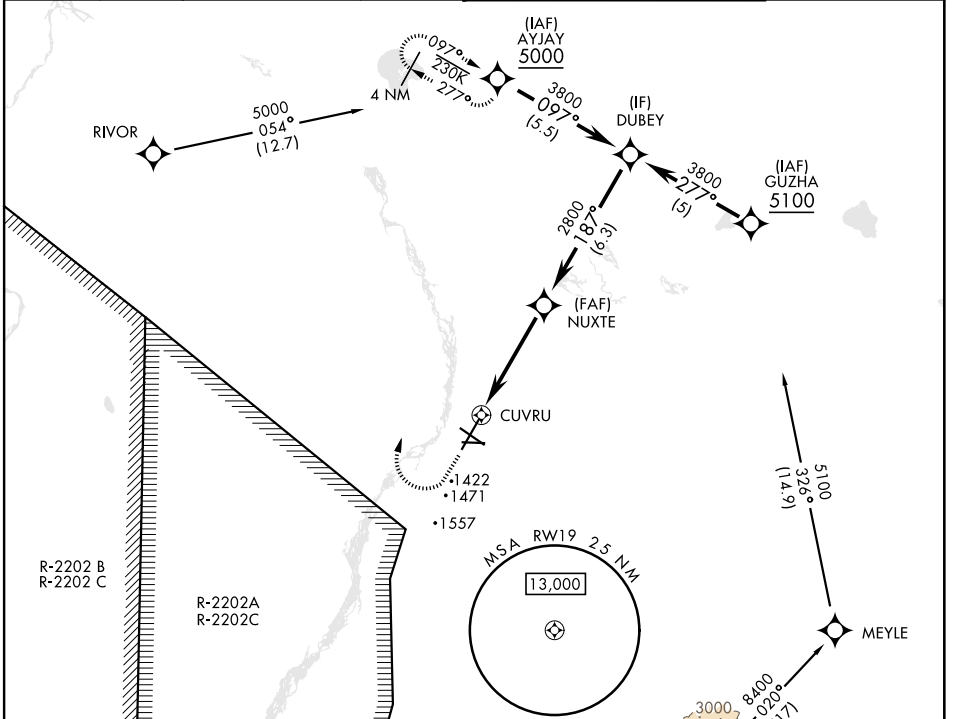
ALLEN AAF (PABI)

RNP APCH - GPS

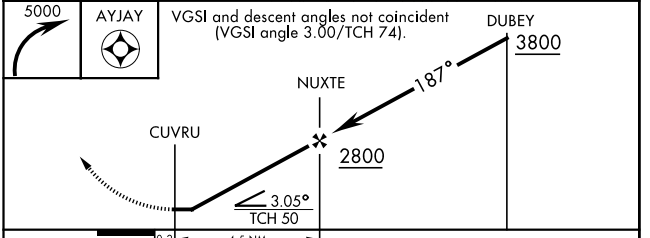
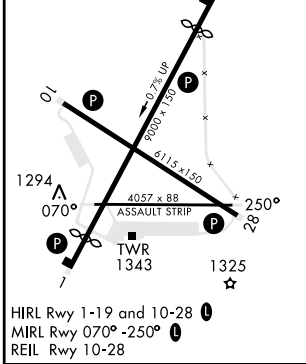
\* Circling not authorized East of Rwy 1-19.

MISSED APPROACH: Climbing right turn to 5000, direct AYJAY and hold.

ATIS	ASOS	ANCHORAGE CENTER	CTAF	ALLEN TOWER *	GND CON
132.075	135.65	135.3 322.5	122.90	119.8 235.775 40.8 (E) FM	118.225 251.05



ELEV 1285	TDZE 1239
Rwy 1 ldg 8000'	
Rwy 19 ldg 8000'	



CATEGORY	A	B	C	D
LNAV MDA	1740-1 501 (500-1)	1740-1 501 (500-1)	1740-1 501 (500-1)	1740-1 501 (500-1)
<b>C</b> CIRCLING*	1740-1 455 (500-1)	1780-1 495 (500-1)	1860-1 575 (600-1/2)	2040-2 755 (800-2 1/2)

DELTA JUNCTION/FORT GREELY, ALASKA  
Amdt 1 10AUG23

64°00'N-145°43'W

ALLEN AAF (PABI)

# RNAV (GPS) RWY 19

AK, 25 JAN 2024 to 21 MAR 2024

AK, 25 JAN 2024 to 21 MAR 2024