

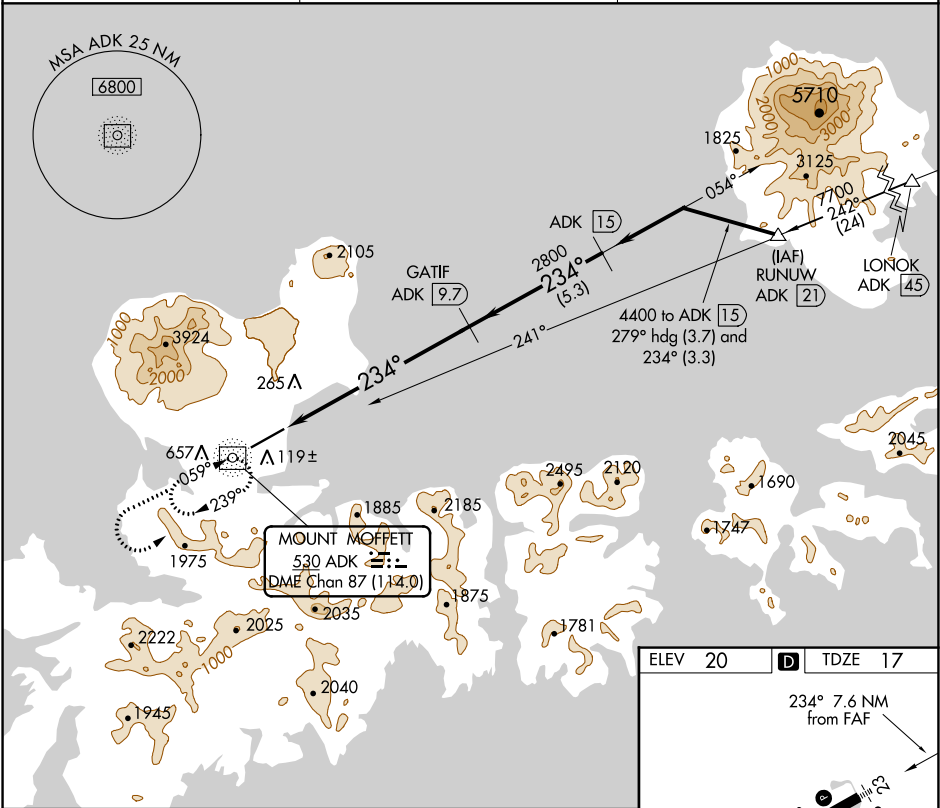
NDB/DME ADK 530	APP CRS 234°	Rwy ldg TDZE Apt Elev	6190 17 20
Chan 87 (114.0)			

NDB/DME RWY 23

ADAK (ADK)(PADK)

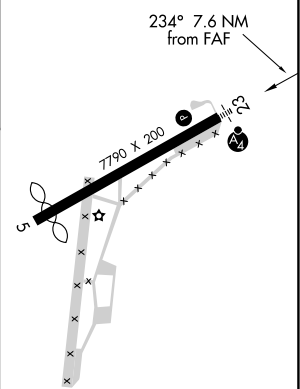
<p>Circling not authorized at night. Circling NA northwest of Rwy 5-23.</p>	<p>MALS</p>	<p>MISSED APPROACH: Climb to 5000 via direct ADK NDB/DME and ADK NDB/DME 234° bearing, then climbing left turn to 9000 direct ADK NDB/DME and hold.</p>

AWOS-3P 134.5	ANCHORAGE CENTER 126.4 254.3	CTAF 122.9
-------------------------	--	----------------------



AK, 25 JAN 2024 to 21 MAR 2024

ELEV 20	D TDZE 17
---------	------------------



5000 9000 ADK VGSI and descent angles not coincident (VGSI Angle 3.50/TCH 53).

ADK 234°

ADK NDB/DME

ADK 2.7

GATIF ADK 9.7

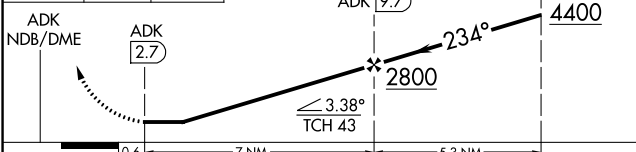
ADK 15

4400

2800

234°

≤ 3.38° TCH 43



CATEGORY	A	B	C	D
S-23	1600/60 1583 (1600-1¼)	1600-1½ 1583 (1600-1½)	1600-3	1583 (1600-3)
CIRCLING	1600-1¼ 1580 (1600-1¼)	1600-1½ 1580 (1600-1½)	1600-3 1580 (1600-3)	2540-3 2520 (3000-3)

REIL Rwy 23 **D**

HIRL Rwy 5-23 **D**