
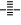


TACAN BER Chan <b>77</b> <b>(113.0)</b>	APP CRS <b>233°</b>	Rwy ldg <b>6190</b> TDZE <b>17</b> Apt Elev <b>20</b>
---	------------------------	---

# TACAN RWY 23

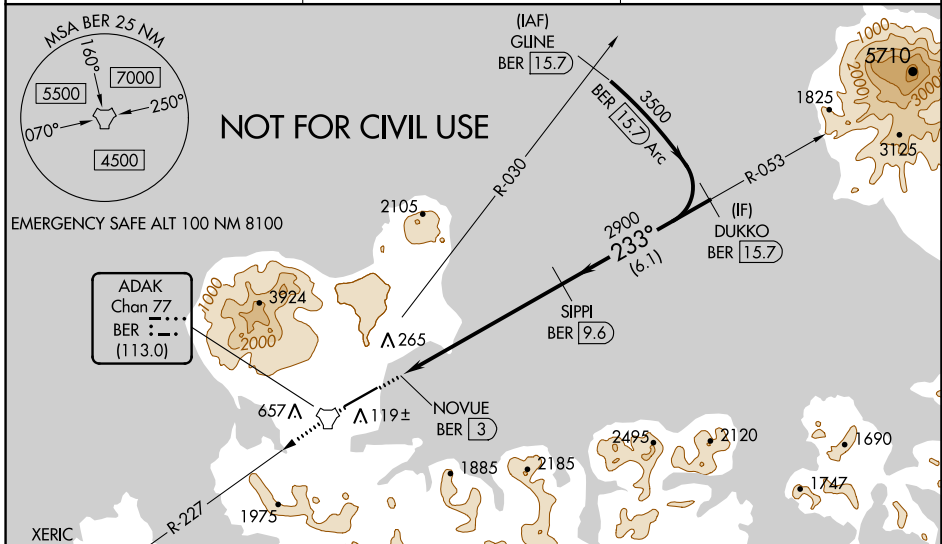
ADAK (ADK)(PADK)

**▼** Circling NA northwest of Rwy 5-23. Rwy 23 helicopter visibility reduction below RVR 5000 NA. Straight-in Rwy 23 at night, operational VGSI required, remain on or above VGSI glidepath until threshold.  
**▲** USAF only: When VGSI inop, Straight-in Rwy 23 authorized at night with command approval.  
 Circling NA at night - unlit terrain 21 feet MSL 200 feet from threshold, 551 feet right of centerline. For inop ALS, increase S-23\* Cat C/D/E visibility to 2½ SM.

MALS  

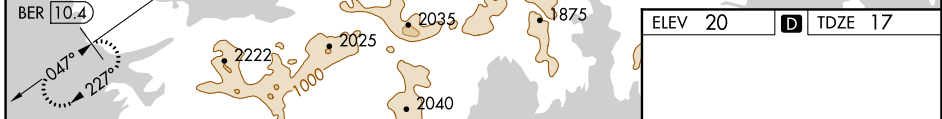
MISSED APPROACH: Climb to 4300 direct BER TACAN and continue on BER R-227 direct XERIC/BER 10.4 DME and hold, continue climb-in-hold to 4300.  
 \*Missed approach requires minimum climb of 375 feet per NM to 2800.

AWOS-3P <b>134.5</b>	ANCHORAGE CENTER <b>126.4 254.3</b>	CTAF <b>122.9 0</b>
-------------------------	--	------------------------




AK, 25 JAN 2024 to 21 MAR 2024

AK, 25 JAN 2024 to 21 MAR 2024



4300 BER	BER R-227	XERIC BER 10.4	SIPPI BER 9.6	DUKKO BER 15.7
TACAN	NOVUE BER 3	≤ 3.50° TCH 53	2900	3500
1 NM	6.6 NM	6.1 NM		

CATEGORY	A	B	C	D	E
s-23*	800/50	783 (800-1)	800-2	783 (800-2)	
s-23	1620-1¼ 1603 (1600-1¼)	1620-1½ 1603 (1600-1½)	1620-3	1603 (1600-3)	
 CIRCLING	1620-1¼ 1600 (1600-1¼)	1620-1½ 1600 (1600-1½)	1620-3 1600 (1600-3)	2440-3	2420 (2500-3)

