

LEXINGTON, OKLAHOMA

COPTER RNAV (GPS) RWY 17

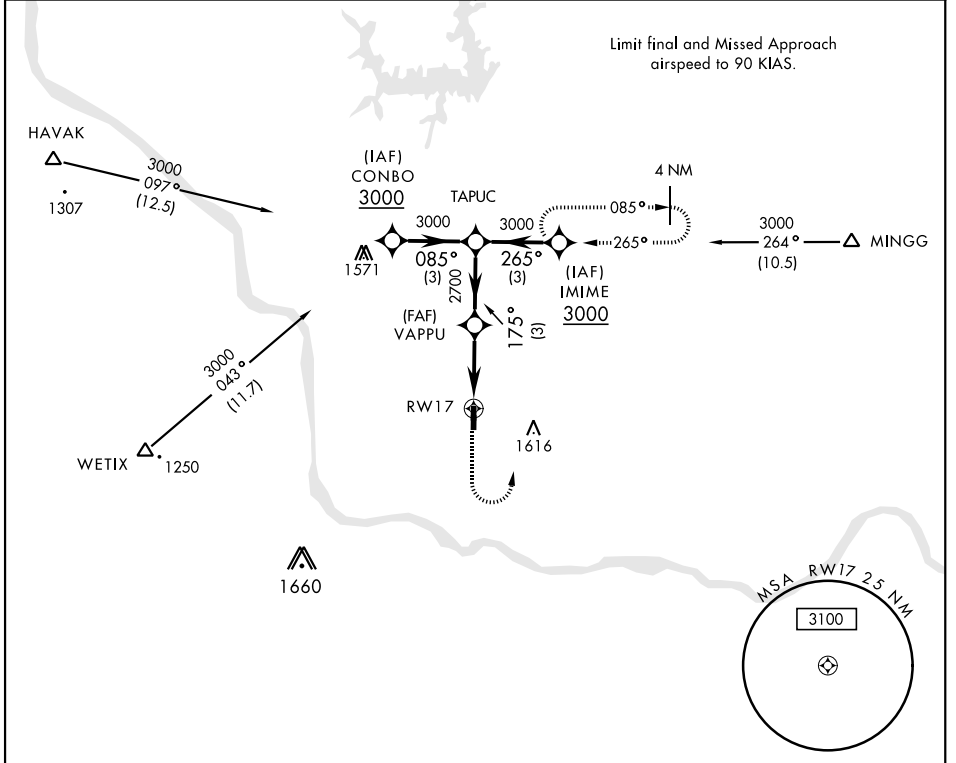
APCH CRS	Rwy Idg	2005
175°	TDZE	1091
	Arprt Elev	1091

AL-2497 [USA]

MULDROW AHP (KHMY)

<p>NA Obtain local altimeter setting on CTAF; when not received, use University of Oklahoma Westheimer altimeter setting minimums. DME/DME RNP-0.3 NA</p>	<p>MISSED APPROACH: Climbing left turn to 3000 direct IMIME and hold.</p>
--	---

<p>OKE CITY APP CON 124.2 336.4</p>	<p>MULDROW OPS (Advsvy Svc only) 46.9 139.425 227.2 (CTAF)</p>
--	---



<p>TAPUC 3000</p> <p>175°</p> <p>VAPPU 2700</p> <p>RWY 17</p> <p>3.64°</p> <p>3 NM</p> <p>3 NM</p>	<p>3000</p> <p>IMIME</p>	<p>ELEV 1091</p> <p>TDZE 1091</p> <p>175° to RWY 17</p> <p>2005 x .75</p> <p>35</p> <p>1118</p> <p>1121</p> <p>1141</p> <p>1150</p>
<p>CATEGORY</p>	<p>COPTER</p>	
<p>LNAV MDA</p>	<p>1540-1 449 (500-1)</p>	
<p>UNIVERSITY OF OKLAHOMA WESTHEIMER ALTIMETER SETTING MINIMUMS</p>		
<p>LNAV MDA</p>	<p>1600-1 509 (600-1)</p>	
<p>LIRL Rwy 17-35</p>		

LEXINGTON, OKLAHOMA

35°02'N-97°14'W

MULDROW AHP (KHMY)

Orig 18200

COPTER RNAV (GPS) RWY 17

SC-1, 22 FEB 2024 to 21 MAR 2024

SC-1, 22 FEB 2024 to 21 MAR 2024