

WAAS CH <b>62803</b> <b>W10A</b>	APP CRS <b>096°</b>	Rwy Idg TDZE Apt Elev	<b>4199</b> <b>673</b> <b>673</b>
--	------------------------	-----------------------------	---

# RNAV (GPS) RWY 10

WOOD COUNTY (1G4)

RNP APCH.

- Circling Rwy 36 NA at night. VDP NA when using Toledo Express altimeter setting.
- NA When local altimeter setting not received, use Toledo Express altimeter setting; increase DA to 974 feet; increase all MDA 40 feet and LNAV Cat C visibility 1/4 SM, Circling Cat C/D visibility 1/4 SM.

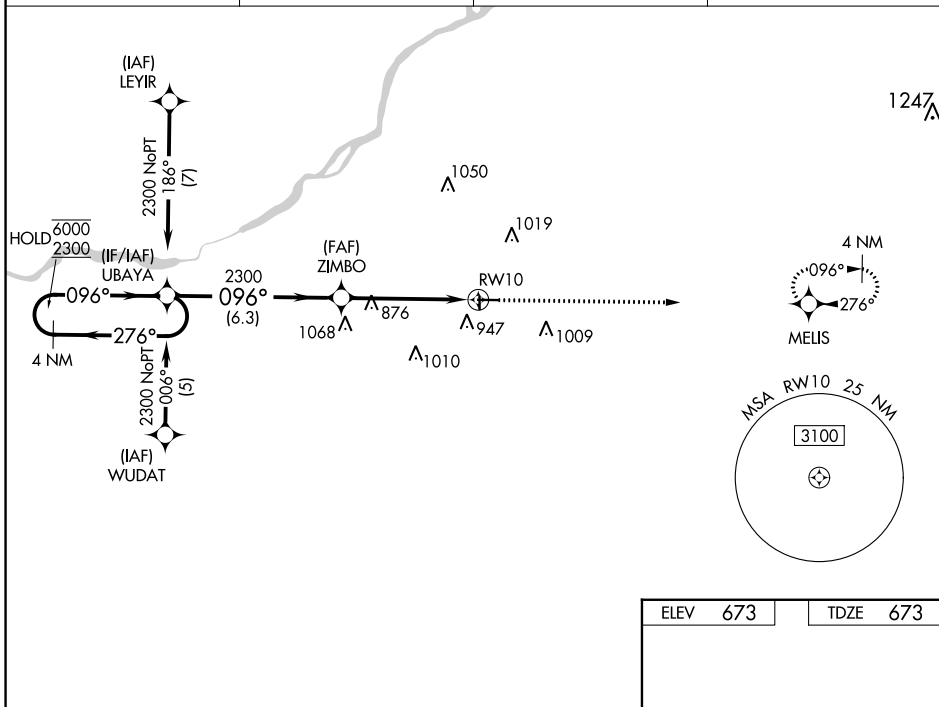
MISSED APPROACH:  
Climb to 2300 direct  
MELIS and hold.

AWOS-3  
**120.725**

TOLEDO APP CON  
**126.1 317.55**

CLNC DEL  
**125.6**

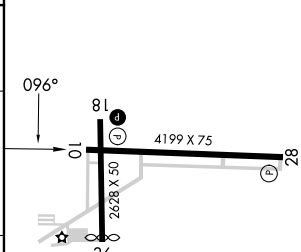
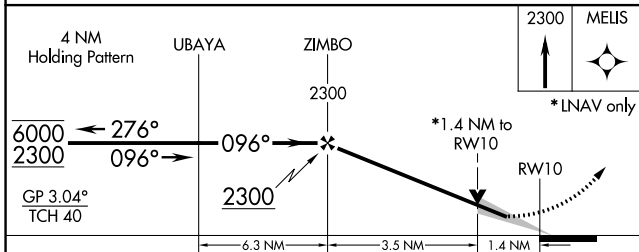
UNICOM  
**122.975 (CTAF)**



EC-2, 22 FEB 2024 to 21 MAR 2024

EC-2, 22 FEB 2024 to 21 MAR 2024

ELEV	673	TDZE	673
------	-----	------	-----



CATEGORY	A	B	C	D
LPV DA	939-1		266 (300-1)	
LNAV MDA	1160-1	487 (500-1)	1160-1 1/8 487 (500-1 3/8)	1160-1 1/2 487 (500-1 1/2)
CIRCLING	1300-1	627 (700-1)	1320-1 3/4 647 (700-1 3/4)	1320-2 647 (700-2)

REIL Rwys 10, 18, and 28   
MRL Rwys 10-28 and 18-36