

LOC I-AVA 111.3	APCH CRS 177°	Rwy Idg 12,351 TDZE 900 Arprt Elev 911
---------------------------	-------------------------	--

AL-5010 [USAF]

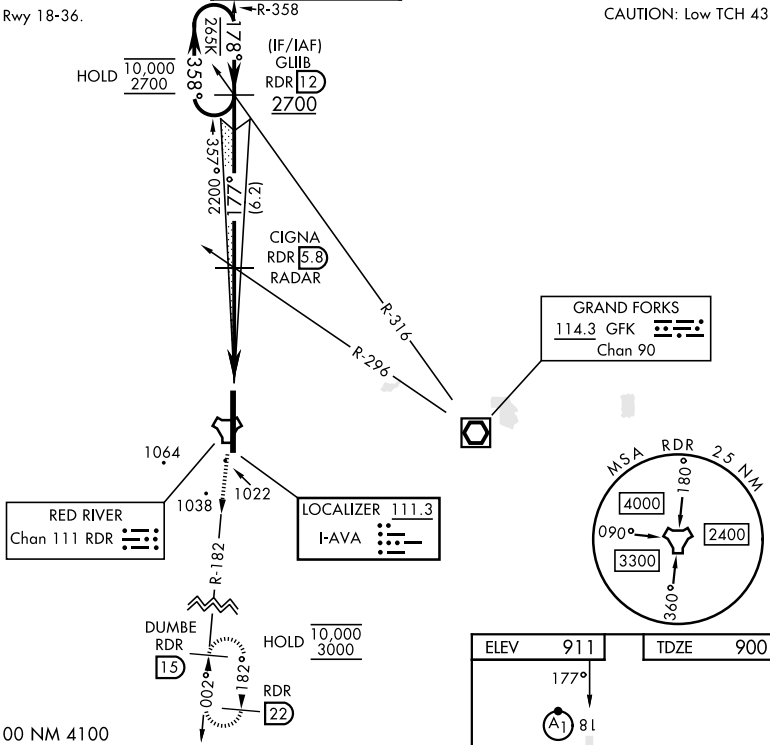
GRAND FORKS AFB (KRDR)

RADAR or DME required.	ALSIF-1 	MISSED APPROACH: Climb to 3000 on RDR TACAN R-182 to DUMBE and hold.
------------------------	-------------	--

ATIS 273.45	APP CON 118.1 318.1	RED RIVER TOWER 124.9 349.0	GND CON 119.15 275.8	CLNC DEL 119.15 360.7
-----------------------	-------------------------------	---------------------------------------	--------------------------------	---------------------------------

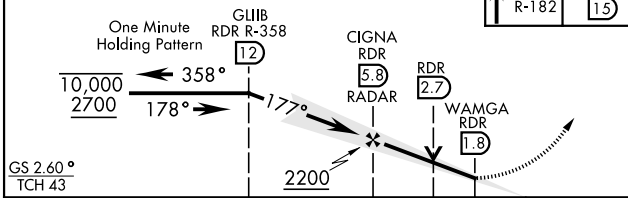
***Circling NA E of Rwy 18-36.

CAUTION: Low TCH 43



1339
EMERG SAFE ALT 100 NM 4100

VGSI and ILS glidepath not coincident (VGSI Angle 2.60/TCH 48).



ELEV 911	TDZE 900
177°	81
12,351 x 150	TWR
36	36
HIRL Rwy 18-36	
FAF to MAP 4.1 NM	
Knots	60 90 120 150 180
Min:Sec	4:06 2:44 2:03 1:38 1:22

NC-1, 22 FEB 2024 to 21 MAR 2024

NC-1, 22 FEB 2024 to 21 MAR 2024