

LOC I-ANB 111.5	APP CRS 052°	Rwy Idg 7000
		TDZE 595
		Apt Elev 612

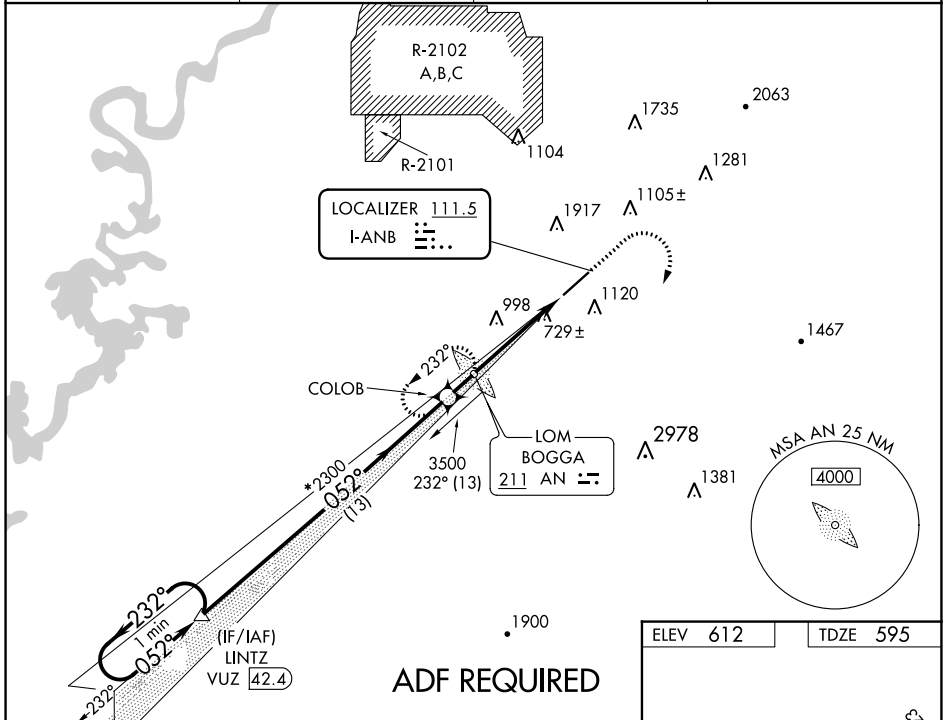
ILS Z or LOC Z RWY 5

ANNISTON RGNL (ANB)

⚠ Circling NA north of Rwy 5-23. ADF required. When local altimeter setting not received, use Gadsden altimeter setting: increase DA to 975 and all visibilities ¼ SM; all MDAs 80 feet, and all Cat C visibilities ½ SM. For inop ALS increase S-ILS 5 all Cats visibility to 1 SM. For inop ALS when using Gadsden altimeter setting, increase S-ILS 5 all Cats visibility to 1¼ SM.

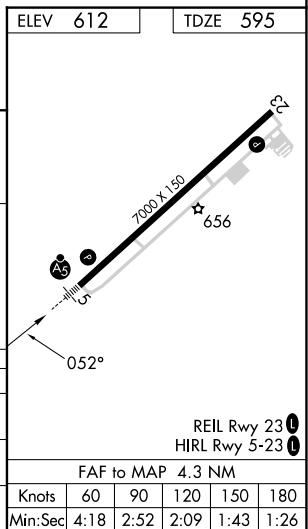
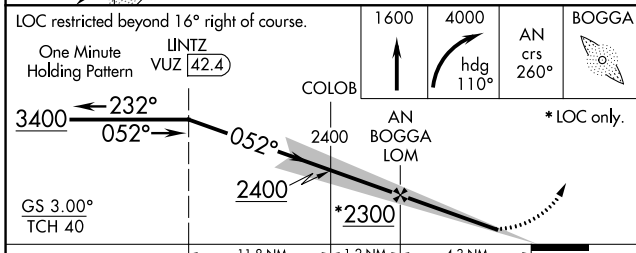
MALS
MISSED APPROACH: Climb to 1600 then climbing right turn to 4000 on heading 110° then on BOGGA LOM 260° course to BOGGA LOM and hold.

ASOS 119.675	BIRMINGHAM APP CON 132.15 285.45	CTAF 123.60	UNICOM 123.0
------------------------	--	-----------------------	------------------------



SE-4, 22 FEB 2024 to 21 MAR 2024

SE-4, 22 FEB 2024 to 21 MAR 2024



LOC restricted beyond 16° right of course.	1600	4000	AN crs 260°	BOGGA
One Minute Holding Pattern LINTZ VUZ 42.4	↑	hdg 110°		
3400 ← 232° → 052° → 2400	COLOB	AN BOGGA LOM	*LOC only.	
GS 3.00° TCH 40	2400	*2300		
	11.8 NM	1.2 NM	4.3 NM	
CATEGORY	A	B	C	D
S-ILS 5	909-½ 314 (300-½)			
S-LOC 5	1120-½ 525 (600-½)	1120-1 525 (600-1)	NA	
C CIRCLING	1420-1 808 (900-1)	1420-2¼ 808 (900-2¼)	1820-3 1208 (1300-3)	

ELEV	612	TDZE	595
FAF to MAP 4.3 NM			
Knots	60	90	120 150 180
Min:Sec	4:18	2:52	2:09 1:43 1:26

REIL Rwy 23
HIRL Rwy 5-23