


LOC/DME I-TUT 110.3 Chan 40	APP CRS 046°	Rwy Idg 8200 TDZE 29 Apt Elev 31
---	------------------------	---

ILS or LOC RWY 5

PAGO PAGO INTL (PPG) (NSTU)

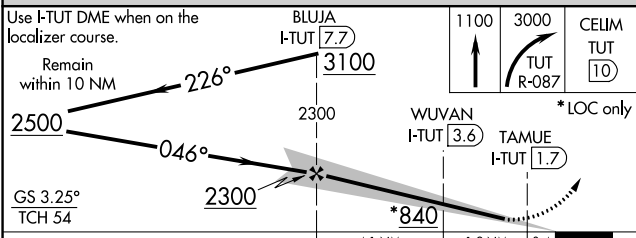
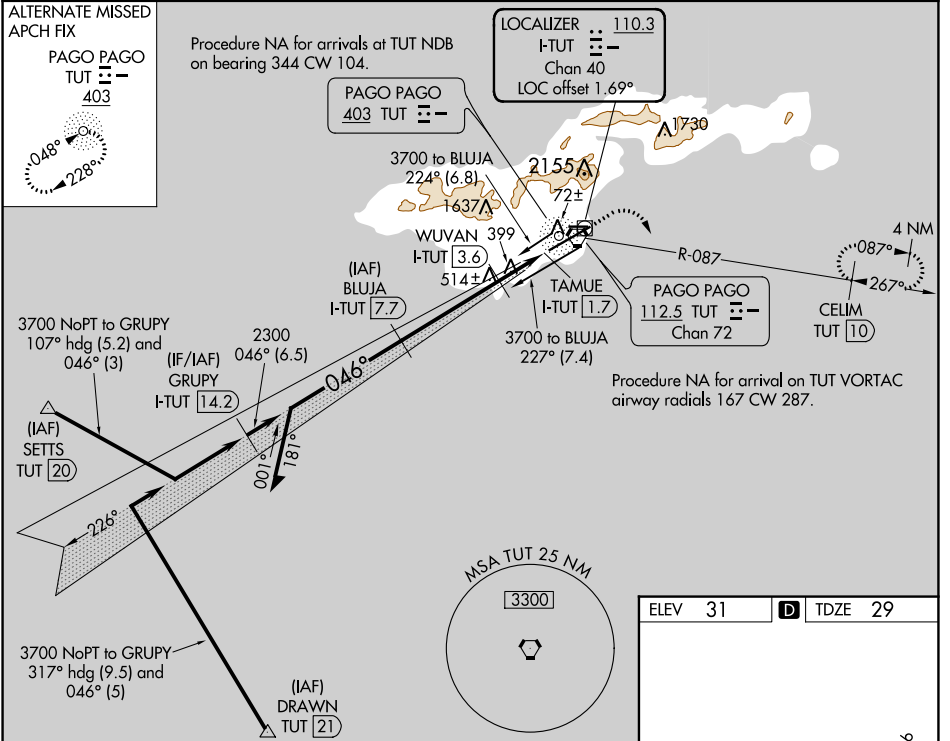
DME required.

⚠ Circling NA northwest of Rwy 5-23. Rwy 5 helicopter visibility reduction below $\frac{3}{4}$ SM NA. For inop ALS, increase S-ILS 5 all Cats visibility to $2\frac{1}{2}$ SM; increase S-LOC 5 Cat A visibility to 1 SM and Cats C/D to 2 SM.

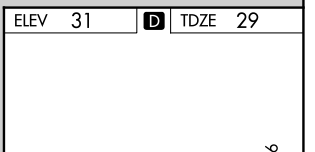
MALSR 

MISSED APPROACH: Climb to 1100 then climbing right turn to 3000 on TUT VORTAC R-087 to CELIM/TUT 10 DME and hold, continue climb-in-hold to 3000.

AWOS-3PT 127.925	FALEOLO APP CON 118.1 6.553(HF)	CTAF 122.9	118.3
----------------------------	---	----------------------	--------------



ELEV 31	D TDZE 29
---------	------------------



3801 x 100

1001 x 150

42

101±

0.4% DOWN

046° 6.4 NM from FAF

CATEGORY	A	B	C	D
S-ILS 5	841-1 $\frac{7}{8}$ 812 (900-1 $\frac{7}{8}$)			
S-LOC 5	780- $\frac{3}{4}$	751 (800- $\frac{3}{4}$)	780-1 $\frac{3}{4}$	751 (800-1 $\frac{3}{4}$)
C CIRCLING	780-1 749 (800-1)	780-1 $\frac{1}{4}$ 749 (800-1 $\frac{1}{4}$)	820-2 $\frac{1}{2}$ 789 (800-2 $\frac{1}{2}$)	860-2 $\frac{3}{4}$ 829 (900-2 $\frac{3}{4}$)

HIRL Rwy 5-23 and 8-26 