

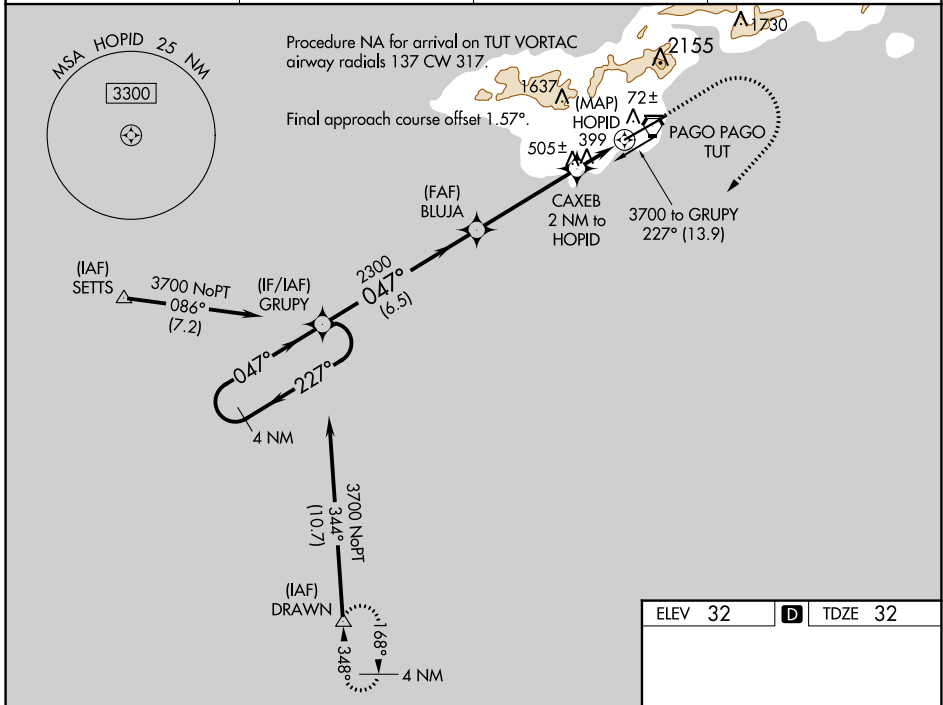
APP CRS	Rwy ldg	8200
047°	TDZE	32
	Apt Elev	32

RNAV (GPS) RWY 5

PAGO PAGO INTL (PPG) (NSTU)

RNP APCH.	MALSR	MISSED APPROACH: (Maintain 185 K max until 760) Climb to 760 then climbing right turn to 4000 direct DRAWN and hold.
<p>▼ For uncompensated Baro-VNAV systems, LNAV/VNAV NA below 22°C or above 54°C.</p> <p>▲ When local altimeter setting not received, procedure NA. Circling NA northwest of Rwy 5-23. Rwy 5 helicopter visibility reduction below 3/4 SM NA. Inop table does not apply to LNAV Cats A/B. For inop ALS, increase LNAV/VNAV all Cats visibility to 1 1/2 SM and LNAV Cats C/D visibility to 2 SM.</p>		

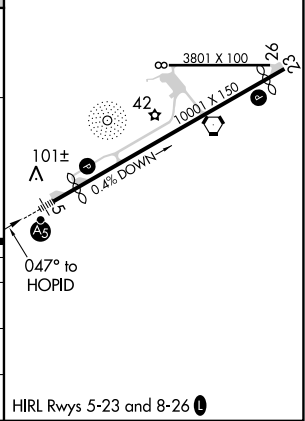
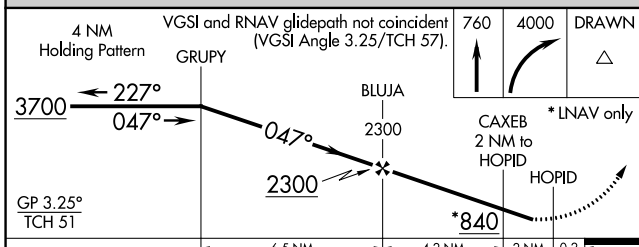
AWOS-3PT 127.925	FALEOLO APP CON 118.1 6.553(HF)	CTAF 122.9	118.3 0
----------------------------	---	----------------------	----------------



PAC, 25 JAN 2024 to 21 MAR 2024

PAC, 25 JAN 2024 to 21 MAR 2024

ELEV 32	D TDZE 32
---------	------------------



CATEGORY	A	B	C	D
LNAV/VNAV DA	551-1		519 (600-1)	
LNAV MDA	760-1	728 (800-1)	760-1 5/8	728 (800-1 5/8)
C CIRCLING	760-1	728 (800-1)	820-2 1/4 788 (800-2 1/4)	860-2 3/4 828 (900-2 3/4)

HIRL Rwy 5-23 and 8-26 **0**