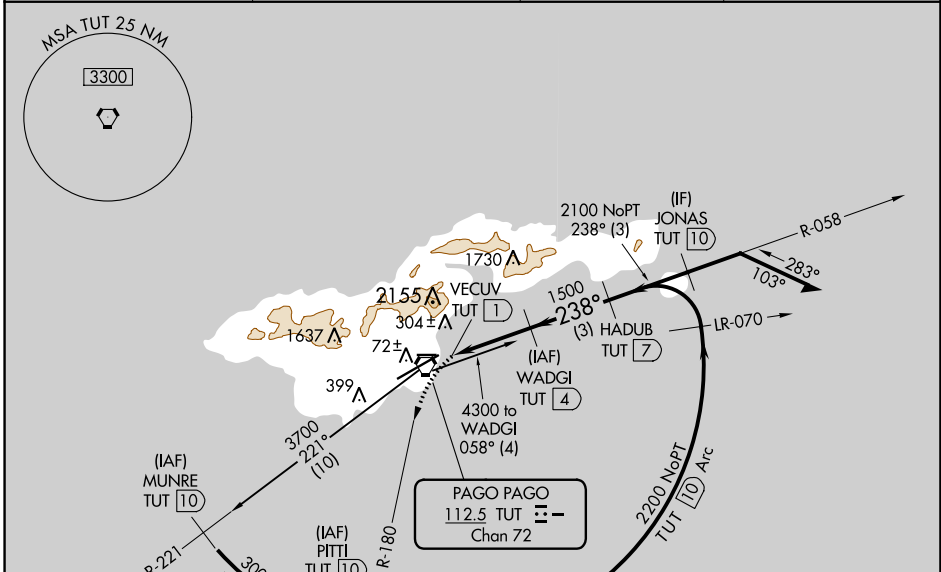


VORTAC TUT <b>112.5</b> Chan <b>72</b>	APP CRS <b>238°</b>	Rwy Idg TDZE Apt Elev	<b>N/A</b> <b>N/A</b> <b>31</b>
--	------------------------	-----------------------------	---------------------------------------

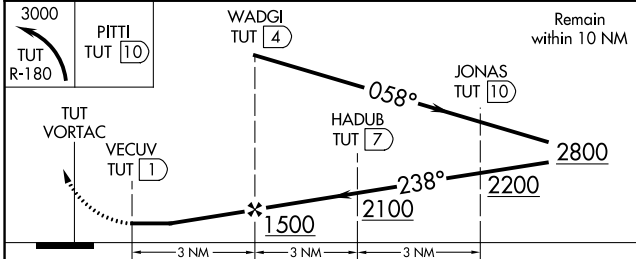
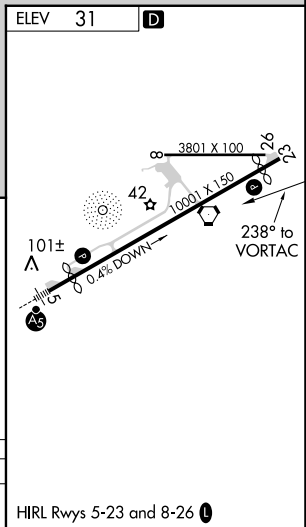
# VOR or TACAN-B

PAGO PAGO INTL (PPG) (NSTU)

DME required.		MISSED APPROACH: Climbing left turn to 3000 on TUT VORTAC R-180 to PITTI/10 DME and hold, continue climb-in-hold to 3000.	
Circling NA northwest of Rwy 5-23.		CTAF <b>122.9</b>	<b>118.3 0</b>
AWOS-3PT <b>127.925</b>	FALEOLO APP CON <b>118.1 6.553 (HF)</b>		



Procedure NA for arrivals on TUT VORTAC airway radials 358 CW 118.



CATEGORY	A	B	C	D
<b>C</b> CIRCLING	560-1 529 (600-1)	700-1 669 (700-1)	820-2¼ 789 (800-2¼)	860-2¾ 829 (900-2¾)