

# COPTER ILS Y or LOC Y RWY 31

ROCHESTER INTL (RST)

LOC I-RST <b>108.5</b>	APP CRS <b>313°</b>	Rwy Idg <b>9033</b> TDZE <b>1304</b> Apt Elev <b>1317</b>
---------------------------	------------------------	-----------------------------------------------------------------

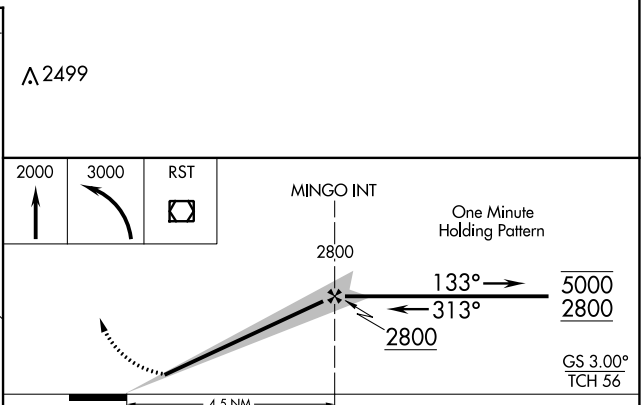
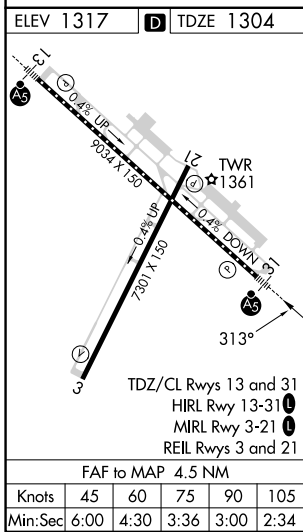
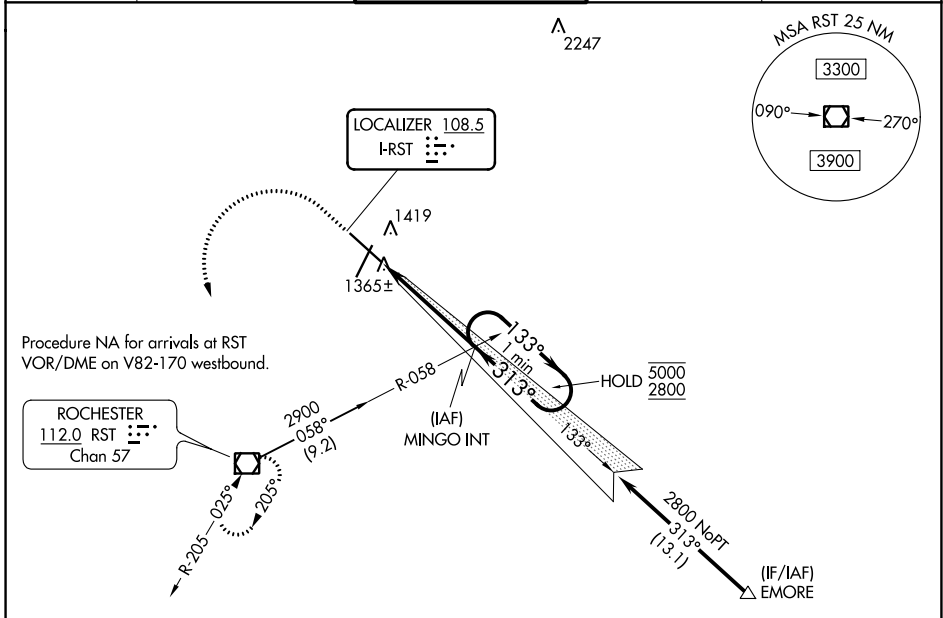
RADAR required for procedure entry at EMORE.

For inop ALS increase visibility to RVR 5000.

MALSR

MISSED APPROACH: Climb to 2000 then climbing left turn to 3000 direct RST VOR/DME and hold.

ATIS <b>120.5</b>	ROCHESTER APP CON* <b>119.8 251.125</b>	ROCHESTER TOWER* <b>118.3 (CTAF) 257.8</b>	GND CON <b>121.9</b>	UNICOM <b>122.95</b>
----------------------	--------------------------------------------	-----------------------------------------------	-------------------------	-------------------------



CATEGORY	COPTER	
H-ILS 31	1504/12	200 (200-¼)
H-LOC 31	1620/12	316 (400-¼)

# COPTER ILS Y or LOC Y RWY 31

NC-1, 22 FEB 2024 to 21 MAR 2024

NC-1, 22 FEB 2024 to 21 MAR 2024