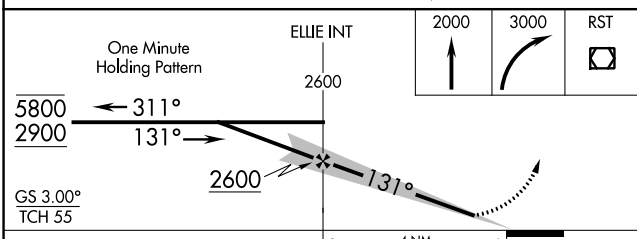
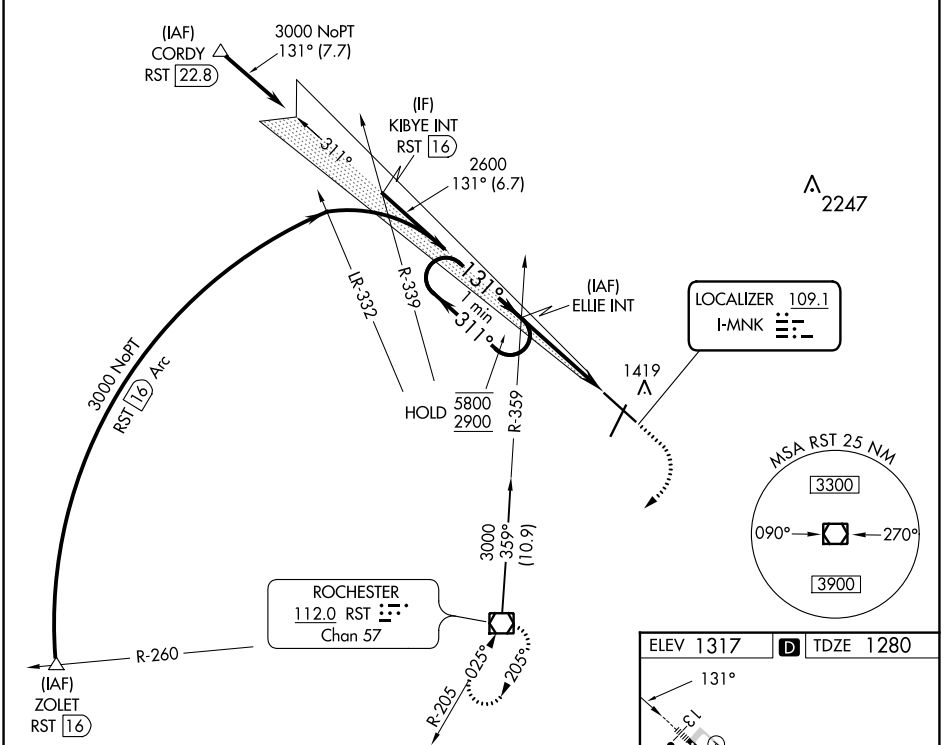


LOC I-MNKG 109.1	APP CRS 131°	Rwy Idg TDZE Apt Elev	9033 1280 1317
----------------------------	------------------------	-----------------------------	---

ILS or LOC RWY 13

ROCHESTER INTL (RST)

 MALS R	MISSED APPROACH: Climb to 2000 then climbing right turn to 3000 direct RST VOR/DME and hold.			
	ATIS 120.5	ROCHESTER APP CON* 119.8 251.125	ROCHESTER TOWER* 118.3(CTAF) 257.8	GND CON 121.9



ELEV 1317	D	TDZE 1280
-----------	---	-----------

Runway Diagram: RWY 13, RWY 31, RWY 3, RWY 21, RWY 17, RWY 12, RWY 11, RWY 10, RWY 9, RWY 8, RWY 7, RWY 6, RWY 5, RWY 4, RWY 3, RWY 2, RWY 1, RWY 0. TDZ/CL Rwy 13 and 31, HIRL Rwy 13-31, MIRL Rwy 3-21, REIL Rwy 3 and 21. FAF to MAP 4 NM.

Knots	60	90	120	150	180
Min:Sec	4:00	2:40	2:00	1:36	1:20

CATEGORY	A	B	C	D
S-ILS 13	1480/18 200 (200-½)			
S-LOC 13	1680/24	400 (400-½)	1680/35	400 (400-¾)
CIRCLING	1720-1 403 (500-1)	1780-1 463 (500-1)	1900-1½ 583 (600-1½)	1900-2 583 (600-2)

NC-1, 22 FEB 2024 to 21 MAR 2024

NC-1, 22 FEB 2024 to 21 MAR 2024