

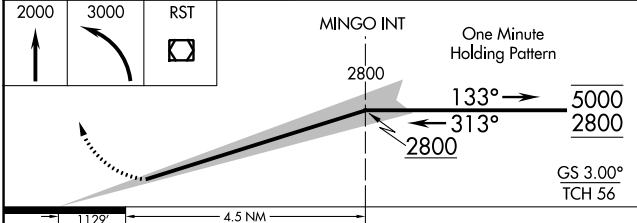
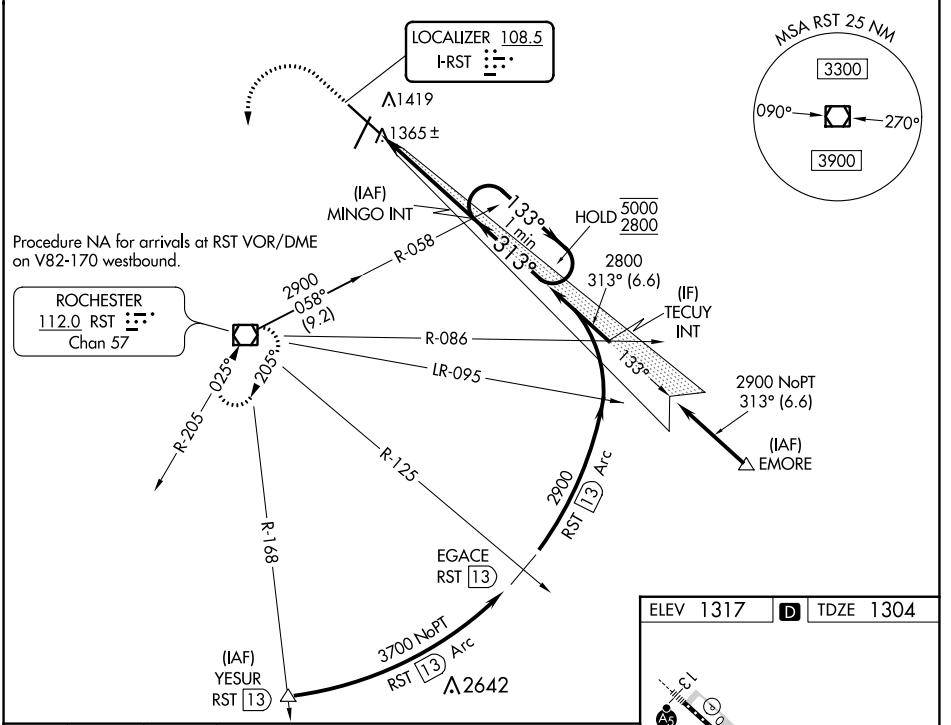
LOC I-RST 108.5	APP CRS 313°	Rwy Idg 9033
		TDZE 1304
		Apt Elev 1317

ILS Z RWY 31 (SA CAT I & II)

ROCHESTER INTL (RST)

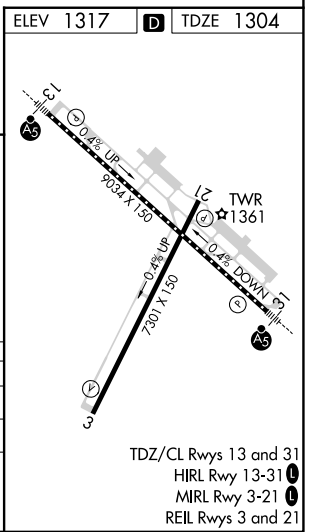
DME required for procedure entry at YESUR.		MALSR	MISSED APPROACH: Climb to 2000 then climbing left turn to 3000 direct RST VOR/DME and hold.
SA CAT I : Requires specific OPSPEC, MSPEC, or LOA approval and use of HUD to DH.			
SA CAT II : Reduced lighting: Requires specific OPSPEC, MSPEC, or LOA approval and use of autoland or HUD to touchdown.			
ASR Procedure NA when tower closed.			

ATIS 120.5	ROCHESTER APP CON* 119.8 251.125	ROCHESTER TOWER* 118.3 (CTAF) 257.8	GND CON 121.9	UNICOM 122.95
----------------------	--	---	-------------------------	-------------------------



CATEGORY	A	B	C	D
S-ILS 31	SA CAT I	RA 204/14	150 DA 1454	
S-ILS 31	SA CAT II	RA 104/12	100 DA 1404	

SA CATEGORY I & II ILS - SPECIAL AIRCREW & AIRCRAFT CERTIFICATION REQUIRED



NC-1, 22 FEB 2024 to 21 MAR 2024

NC-1, 22 FEB 2024 to 21 MAR 2024