

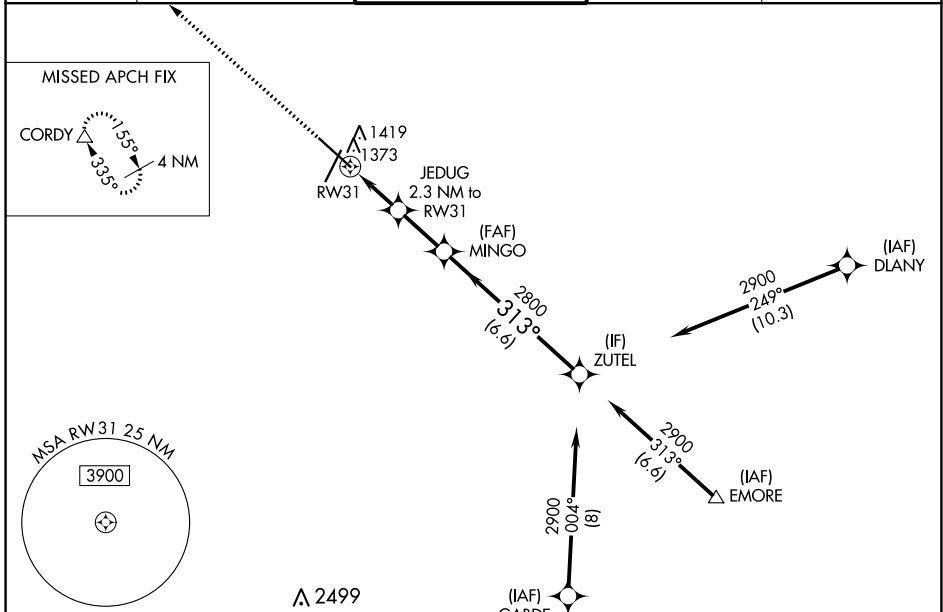
WAAS CH 49028 W31A	APP CRS 313°	Rwy Idg TDZE Apt Elev	9033 1304 1317
--	------------------------	-----------------------------	---

RNAV (GPS) RWY 31

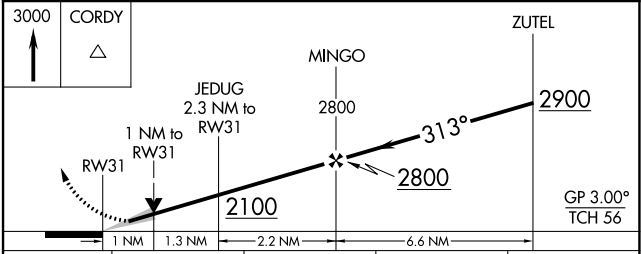
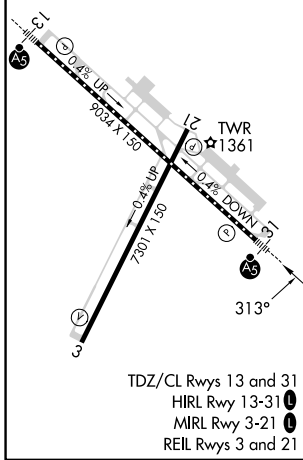
ROCHESTER INTL (RST)

RNP APCH - GPS.	MALSR	MISSED APPROACH: Climb to 3000 direct CORDY and hold.
ASR For uncompensated Baro-VNAV systems, LNAV/VNAV NA below -20°C or above 54°C. For inop ALS, increase LNAV/VNAV all Cats visibility to RVR 4500, increase LNAV Cat C/D visibility to RVR 5500.		

ATIS 120.5	ROCHESTER APP CON* 119.8 251.125	ROCHESTER TOWER* 118.3 (CTAF) 257.8	GND CON 121.9	UNICOM 122.95
----------------------	--	---	-------------------------	-------------------------



ELEV 1317	D	TDZE 1304
-----------	----------	-----------



CATEGORY	A	B	C	D
LPV DA	1504/18 200 (200-½)			
LNAV/VNAV DA	1554/24 250 (300-½)			
LNAV MDA	1640/24	336 (400-½)	1640/35	336 (400-¾)
C CIRCLING	1720-1 403 (500-1)	1780-1 463 (500-1)	1900-1½ 583 (600-1½)	1900-2 583 (600-2)

NC-1, 22 FEB 2024 to 21 MAR 2024

NC-1, 22 FEB 2024 to 21 MAR 2024