

# COPTER ILS or LOC RWY 10R

FLYING CLOUD (FCM)

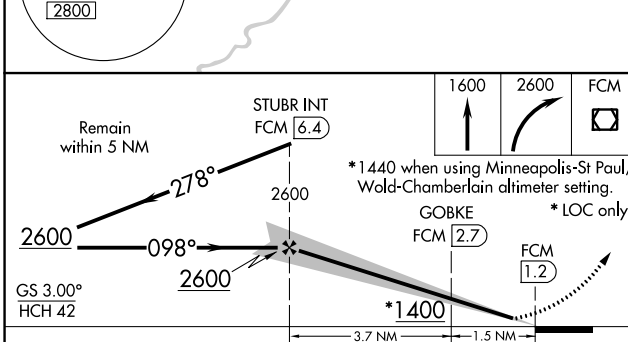
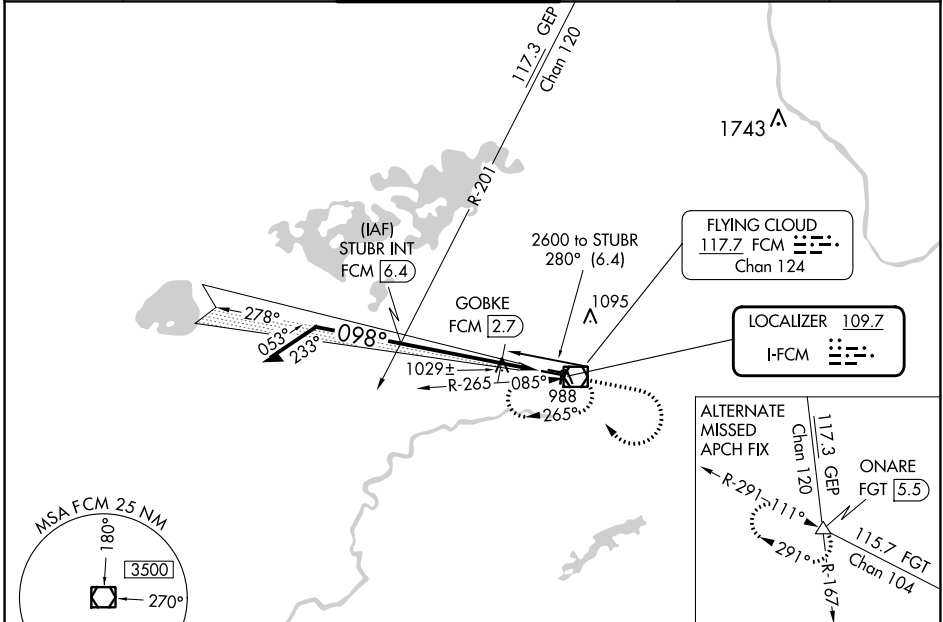
LOC FFCM <b>109.7</b>	APP CRS <b>098°</b>	Rwy Idg TDZE Apt Elev	<b>5001</b> <b>906</b> <b>906</b>
--------------------------	------------------------	-----------------------------	---

**⚠** For inoperative MALSR, increase visibility to 1/2 mile. When local altimeter setting not received, use Minneapolis-St Paul Intl-Wold Chamberlain altimeter setting and increase DA 34 feet and all MDA 40 feet.

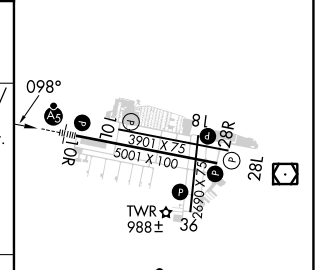
**MALSR**

**MISSED APPROACH:** Climb to 1600 then climbing right turn to 2600 direct FCM  
**VOR/DME** and hold, continue climb-in-hold to 2600.

ATIS <b>124.9</b>	MINNEAPOLIS APP CON <b>134.7 284.7</b>	<b>FLYING CLOUD TOWER *</b> <b>119.15 (CTAF)</b>	GND CON <b>121.7</b>	CLNC DEL <b>121.7</b> (When twr closed)	UNICOM <b>122.95</b>
----------------------	---	---	-------------------------	---	-------------------------



ELEV 906	TDZE 906
----------	----------



CATEGORY	COPTER						
H-ILS 10R	1106-1/4	200 (200-1/4)					
H-LOC 10R	1400-1/4	494 (500-1/4)					
GOBKE FIX MINIMUMS (DME REQUIRED)							
H-LOC 10R	1280-1/4	374 (400-1/4)					
			FAF to MAP 5.2 NM				
		Knots	45	60	75	90	105
		Min:Sec	6:56	5:12	4:10	3:28	2:58

NC-1, 22 FEB 2024 to 21 MAR 2024

NC-1, 22 FEB 2024 to 21 MAR 2024