

WAAS CH 42510 W10A	APP CRS 098°	Rwy Idg TDZE Apt Elev	3901 906 906
--	------------------------	-----------------------------	---

RNAV (GPS) RWY 10L

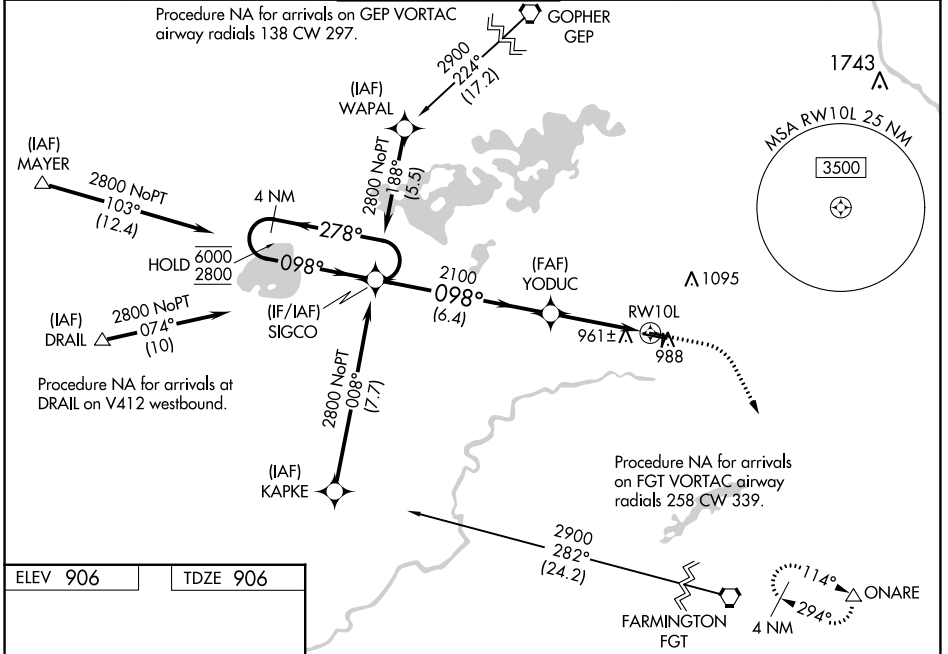
FLYING CLOUD (FCM)

RNP APCH.

Baro-VNAV NA when using Minneapolis-St Paul Intl/Wold Chamberlain altimeter setting.
 For uncompensated Baro-VNAV systems, LNAV-VNAV NA below -22°C (-7°F) or above 54°C (130°F). When local altimeter setting not received, use Minneapolis-St Paul Intl/Wold Chamberlain altimeter setting and increase all DA 34 feet and all MDA 40 feet; increase LNAV/VNAV visibility 1/8 mile all Cats, and Circling Cat D 1/4 mile. When Circling to Rwy 18, 36 at night, operational VGSI required, remain on or above VGSI glidepath until threshold.

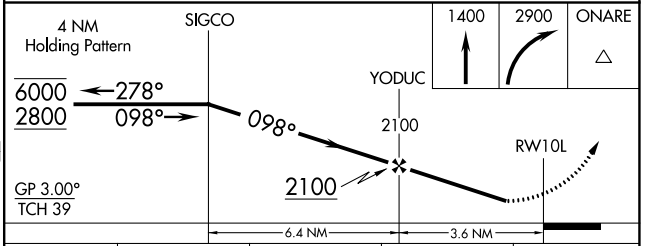
MISSED APPROACH: Climb to 1400 then climbing right turn to 2900 direct ONARE and hold.

ATIS 124.9	MINNEAPOLIS APP CON 134.7 284.7	FLYING CLOUD TOWER * 119.15 (CTAF)	GND CON 121.7	CLNC DEL 121.7 (When twr closed)	UNICOM 122.95
----------------------	---	--	-------------------------	---	-------------------------



ELEV 906 TDZE 906

HIRL Rwy 10R-28L
 REIL Rws 10L and 28R
 REIL Rws 18, 28L, and 36
 MIRL Rwy 10L-28R
 MIRL Rwy 18-36



CATEGORY	A	B	C	D
LPV DA		1187-1	281 (300-1)	
LNAV/VNAV DA		1230-1 1/8	324 (400-1 1/8)	
LNAV MDA		1240-1	334 (400-1)	
C CIRCLING	1320-1 414 (500-1)	1440-1 534 (600-1)	1440-1 1/2 534 (600-1 1/2)	1540-2 634 (700-2)

NC-1, 22 FEB 2024 to 21 MAR 2024

NC-1, 22 FEB 2024 to 21 MAR 2024