

WAAS CH 99709 W28A	APP CRS 278°	Rwy Idg TDZE Apt Elev	3901 904 906
--	------------------------	-----------------------------	---

RNAV (GPS) RWY 28R

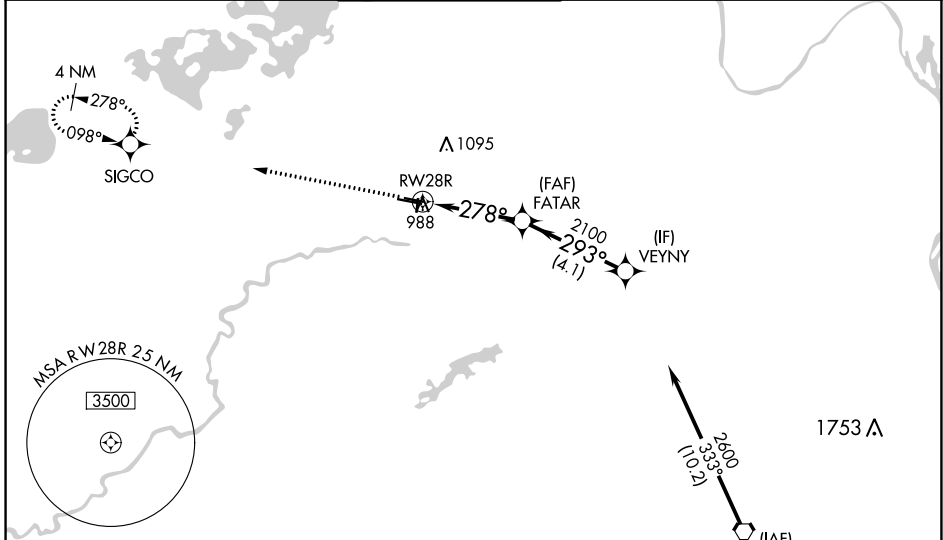
FLYING CLOUD (FCM)

RNP APCH.

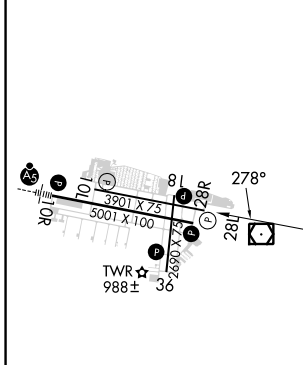
⚠ Baro-VNAV NA when using Minneapolis-St Paul Intl/Wold Chamberlain altimeter setting.
⚠ For uncompensated Baro-VNAV systems, LNAV/VNAV NA below -21°C (-5°F) or above 54°C (130°F). Helicopter visibility reduction below ¾ SM NA. When local altimeter setting not received, use Minneapolis-St Paul Intl/Wold Chamberlain altimeter setting and increase all DA 34 feet and all MDA 40 feet; increase Circling Cat D visibility ¼ mile. When Circling to Rwy 18, 36 at night, operational VGSi required, remain on or above VGSi glidepath until threshold.

MISSED APPROACH: Climb to 2800 direct SIGCO and hold.

ATIS 124.9	MINNEAPOLIS APP CON 134.7 284.7	FLYING CLOUD TOWER * 119.15 (CTAF) 📵	GND CON 121.7	CLNC DEL 121.7 (When twr closed)	UNICOM 122.95
----------------------	---	---	-------------------------	---	-------------------------



ELEV 906	TDZE 904
----------	----------



- HIRL Rwy 10R-28L **📵**
- REIL Rws 10L and 28R
- REIL Rws 18, 28L, and 36 **📵**
- MIRL Rwy 10L-28R
- MIRL Rwy 18-36 **📵**

Procedure NA for arrivals on FGT VORTAC
airway radials 258 CW 011.

2800 SIGCO VGSi and RNAV glidepath not coincident (VGSi Angle 3.00/TCH 38).

VEYNY

FATAR 2100 2600

RWY 28R 278° 293° 2100

GP 3.00° TCH 45

CATEGORY	A	B	C	D
LPV DA		1154-1	250 (300-1)	
LNAV/ VNAV DA		1154-1	250 (300-1)	
LNAV MDA		1240-1	336 (400-1)	
📵 CIRCLING	1320-1 414 (500-1)	1440-1 534 (600-1)	1440-1½ 534 (600-1½)	1540-2 634 (700-2)

NC-1, 22 FEB 2024 to 21 MAR 2024

NC-1, 22 FEB 2024 to 21 MAR 2024