

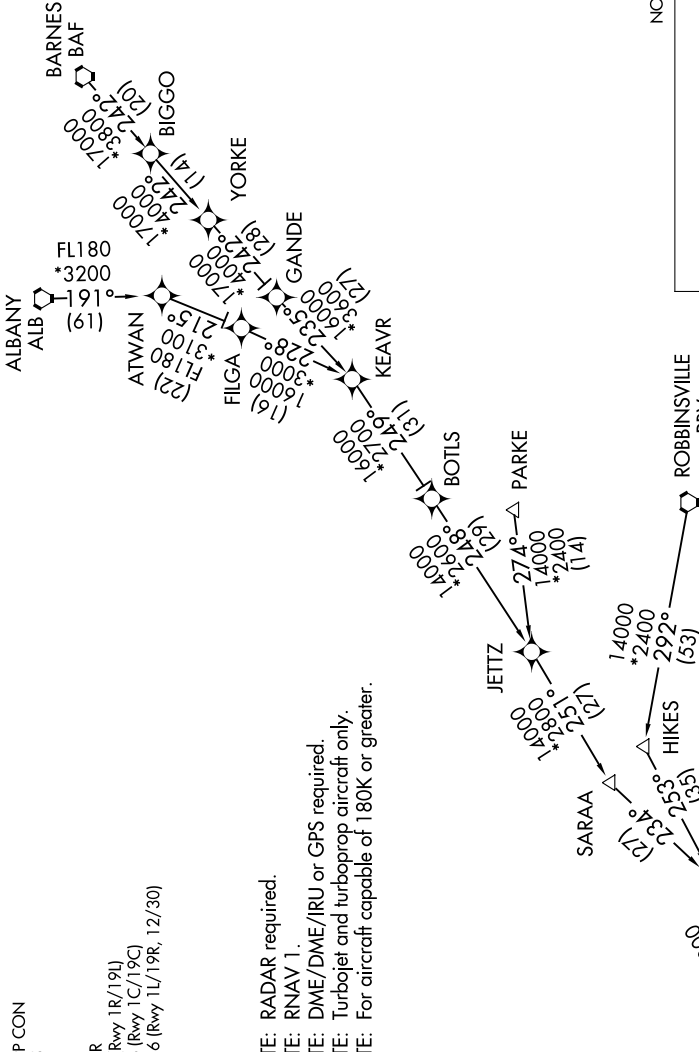
# HYPER EIGHT ARRIVAL (RNAV) Transition Routes

WASHINGTON, DC

NE-3, 22 FEB 2024 to 21 MAR 2024

POTOMAC APP CON  
 133.0 288.35  
 IAD D-ATIS  
 134.85  
 DULLES TOWER  
 120.1 317.8 (Rwy 1R/19L)  
 120.25 348.6 (Rwy 1C/19C)  
 134.425 348.6 (Rwy 1L/19R, 12/30)

NOTE: RADAR required.  
 NOTE: RNAV 1.  
 NOTE: DME/DME/IRU or GPS required.  
 NOTE: Turbojet and turboprop aircraft only.  
 NOTE: For aircraft capable of 180K or greater.



NOTE: Chart not to scale.

- ALBANY TRANSITION (ALB.HYPER8)
- BARNES TRANSITION (BAF.HYPER8)
- FILGA TRANSITION (FILGA.HYPER8)
- GANDE TRANSITION (GANDE.HYPER8)
- MODENA TRANSITION (MXE.HYPER8)
- PARKE TRANSITION (PARKE.HYPER8)
- ROBBINSVILLE TRANSITION (RBV.HYPER8)

(CONTINUED ON FOLLOWING PAGE)

See following page for arrival routes.

# HYPER EIGHT ARRIVAL (RNAV) Transition Routes

WASHINGTON, DC

NE-3, 22 FEB 2024 to 21 MAR 2024