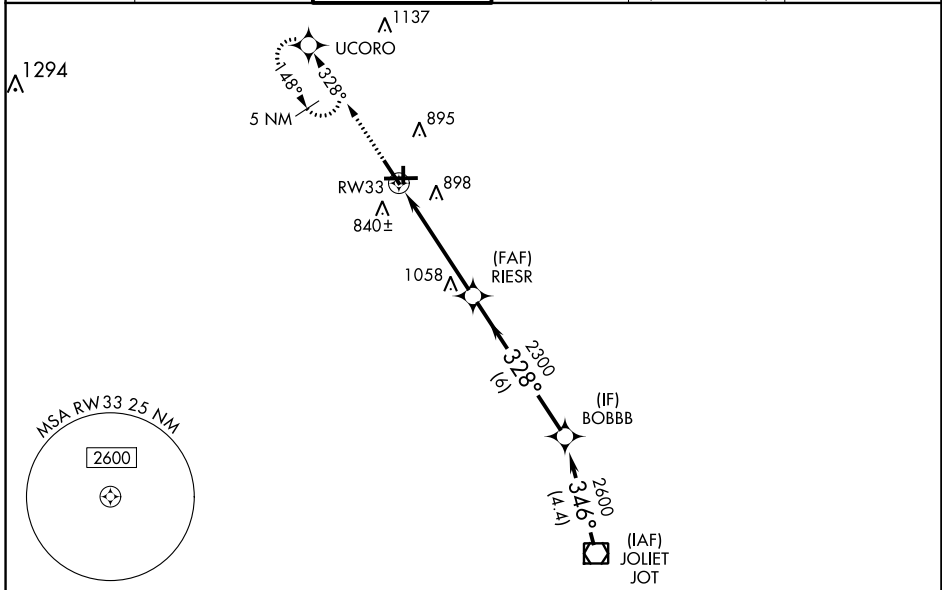


WAAS CH 49105 W33A	APP CRS 328°	Rwy ldg TDZE Apt Elev	5503 705 712
--	------------------------	-----------------------------	---

RNAV (GPS) RWY 33

AURORA MUNI (A.R.R.)

RNP APCH - GPS.				MALSR		MISSED APPROACH: Climb to 3000 direct UCORO and hold, continue climb-in-hold to 3000.	
▼ For uncompensated Baro-VNAV systems, LNAV/VNAV NA below -16°C or above 54°C. For inop MALSR, increase LPV visibility to 1¼ SM all Cnts, LNAV Cnts A/B visibility to 1 SM.							
ATIS 125.85	CHICAGO APP CON 133.5 349.0	AURORA TOWER * 120.6 (CTAF) 0	GND CON 121.7	CLNC DEL 121.7 <small>(When tower closed)</small>	UNICOM 122.95 123.5		

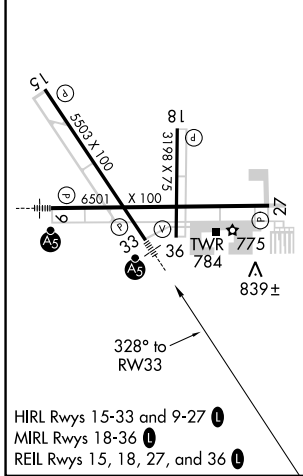


EC-3, 22 FEB 2024 to 21 MAR 2024

EC-3, 22 FEB 2024 to 21 MAR 2024

ELEV 712	TDZE 705
----------	----------

Procedure NA for arrival on JOT VOR/DME airway radials 314 CW 328.



3000 UCORO	JOT VOR/DME			
*LNAV only.	RW33	RIESR	BOBBB	2600
	*1.3 NM to RW33	2300	346°	2600
	1.3 NM	3.5 NM	6 NM	4.4 NM
CATEGORY	A	B	C	D
LPV DA	1042-¾		337 (400-¾)	
LNAV/VNAV DA	1194-1¼		489 (500-1¼)	
LNAV MDA	1140-¾		435 (500-¾)	
CIRCLING	1200-1 488 (500-1)		1300-1½ 608 (700-2)	
			1140-1 435 (500-1)	
			GP 3.00° TCH 48	