

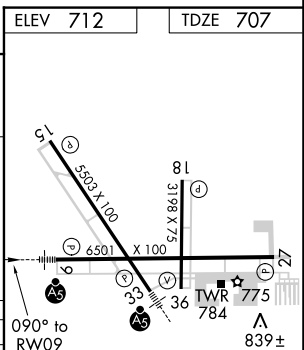
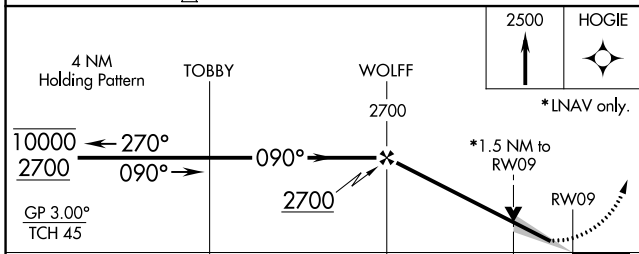
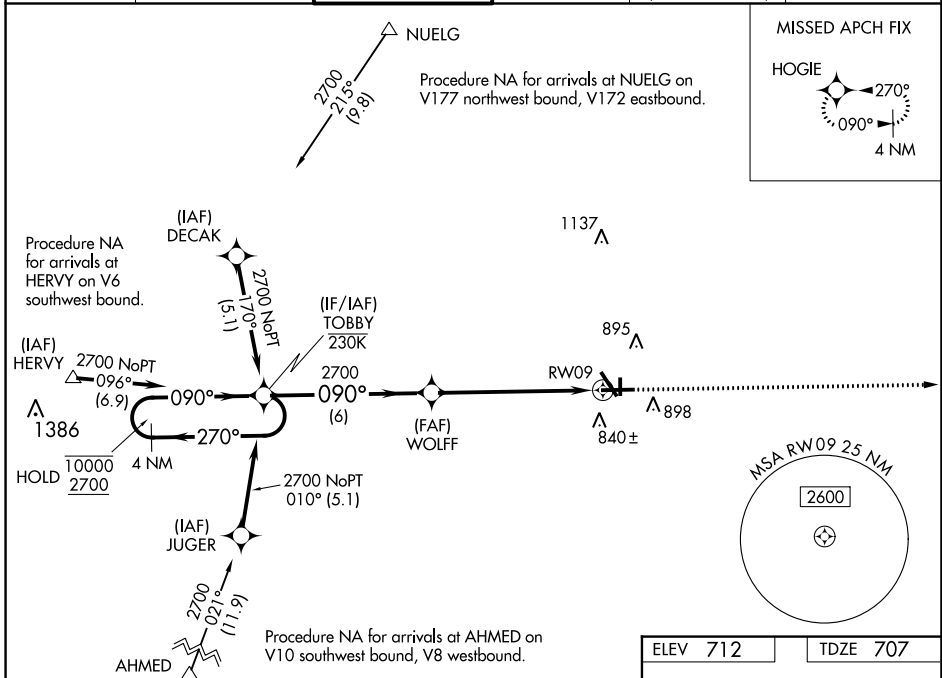
WAAS CH 45522 W09A	APP CRS 090°	Rwy Idg 6501 TDZE 707 Apt Elev 712
--	------------------------	---

RNAV (GPS) RWY 9

AURORA MUNI (A.R.R.)

RNP APCH - GPS.				MALSRL	MISSED APPROACH: Climb to 2500 direct HOGIE and hold.
<p>▼ For uncompensated Baro-VNAV systems, LNAV/VNAV NA below -20°C or above 54°C. For inop APCH, increase LNAV Cat C/D visibility to 1½ SM.</p>					

ATIS 125.85	CHICAGO APP CON 133.5 349.0	AURORA TOWER* 120.6 (CTAF) 0	GND CON 121.7	CLNC DEL 121.7 (When tower closed)	UNICOM 122.95 123.5
-----------------------	---------------------------------------	---	-------------------------	---	-------------------------------



CATEGORY	A	B	C	D
LPV DA		957-½	250 (300-½)	
LNAV/VNAV DA		1035-½	328 (400-½)	
LNAV MDA	1220-½	513 (600-½)	1220-1	513 (600-1)
CIRCLING	1220-1	508 (600-1)	1300-1½ 588 (600-1½)	1320-2 608 (700-2)

MIRL Rwy 18-36 **0**
HIRL Rwy 15-33 and 9-27 **0**
REIL Rwy 15, 18, 27, and 36 **0**

EC-3, 22 FEB 2024 to 21 MAR 2024

EC-3, 22 FEB 2024 to 21 MAR 2024