

LOC I-DPA 109.5	APP CRS 097°	Rwy Idg 4750 TDZE 756 Apt Elev 759
---------------------------	------------------------	---

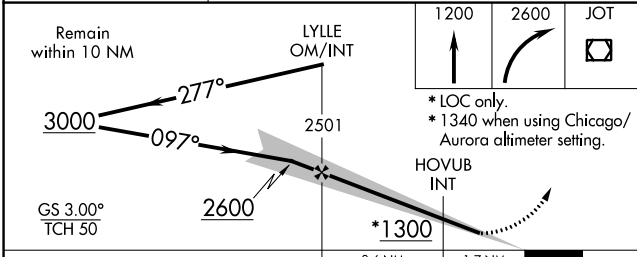
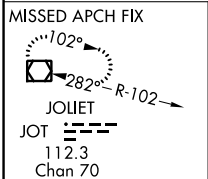
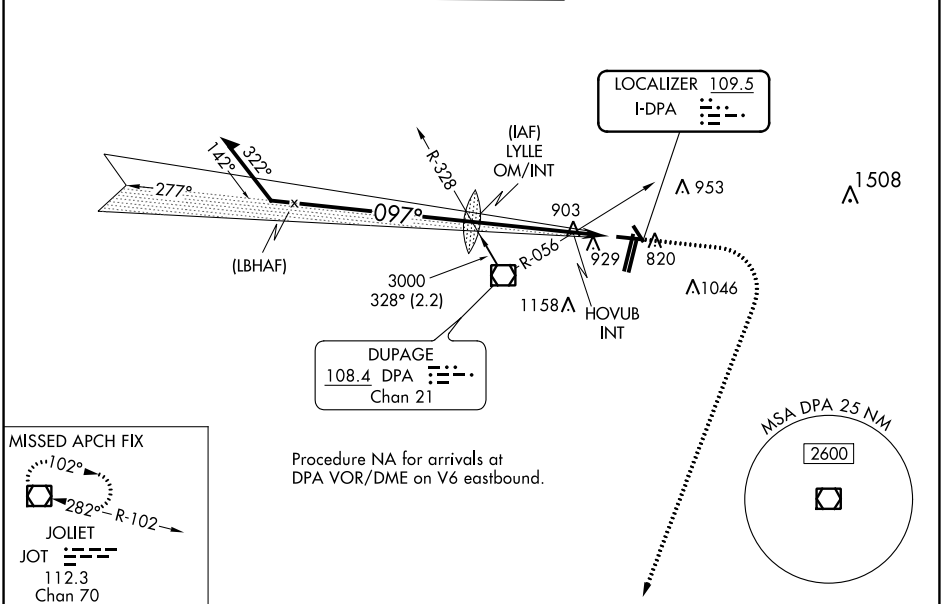
ILS or LOC RWY 10

DUPAGE (DPA)

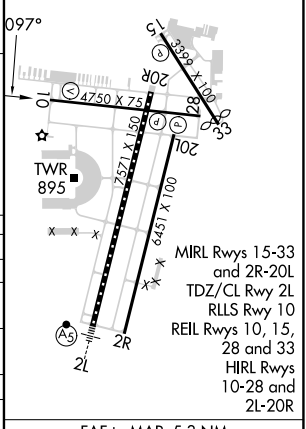
⚠ When local altimeter setting not received, use Chicago/Aurora altimeter setting: increase S-ILS 10 DA to 993 feet; increase all MDA 40 feet and visibility S-LOC 10 Cats C/D and HOVUB INT minimums S-LOC 10 Cats C/D 1/8 SM, and Circling and HOVUB INT minimums Circling Cats C/D 1/4 SM. Circling Rwy 15, 28, 33 NA at night.

⚠ MISSED APPROACH: Climb to 1200 then climbing right turn to 2600 direct JOT VOR/DME and hold.

ATIS 132.075	CHICAGO APP CON 133.5 349.0	DUPAGE TOWER 120.9 257.8	GND CON 121.8	CLNC DEL 119.75
------------------------	---------------------------------------	---	-------------------------	---------------------------



ELEV 759	TDZE 756
----------	----------



CATEGORY	A	B	C	D
S-ILS 10		956-3/4	200 (200-3/4)	
S-LOC 10	1300-1	544 (600-1)	1300-1 5/8	544 (600-1 5/8)
CIRCLING	1300-1 541 (600-1)	1360-1 601 (700-1)	1460-2 701 (800-2)	1460-2 1/4 701 (800-2 1/4)
HOVUB INT MINIMUMS (DUAL VOR RECEIVERS REQUIRED)				
S-LOC 10	1220-1	464 (500-1)	1220-1 3/8	464 (500-1 3/8)
CIRCLING	1260-1 501 (600-1)	1360-1 601 (700-1)	1460-2 701 (800-2)	1460-2 1/4 701 (800-2 1/4)

Knots	60	90	120	150	180
Min:Sec	5:18	3:32	2:39	2:07	1:46

EC-3, 22 FEB 2024 to 21 MAR 2024

EC-3, 22 FEB 2024 to 21 MAR 2024