


LOC HBE <b>110.9</b>	APP CRS <b>236°</b>	Rwy Idg TDZE Apt Elev	<b>7372</b> <b>1145</b> <b>1199</b>
-------------------------	------------------------	-----------------------------	-------------------------------------------

# ILS or LOC RWY 24

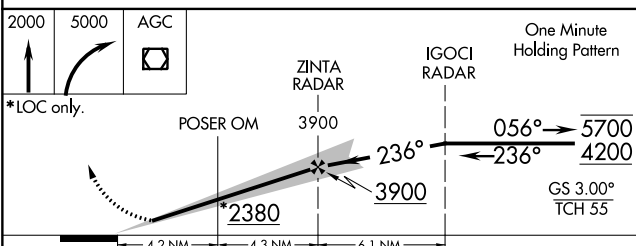
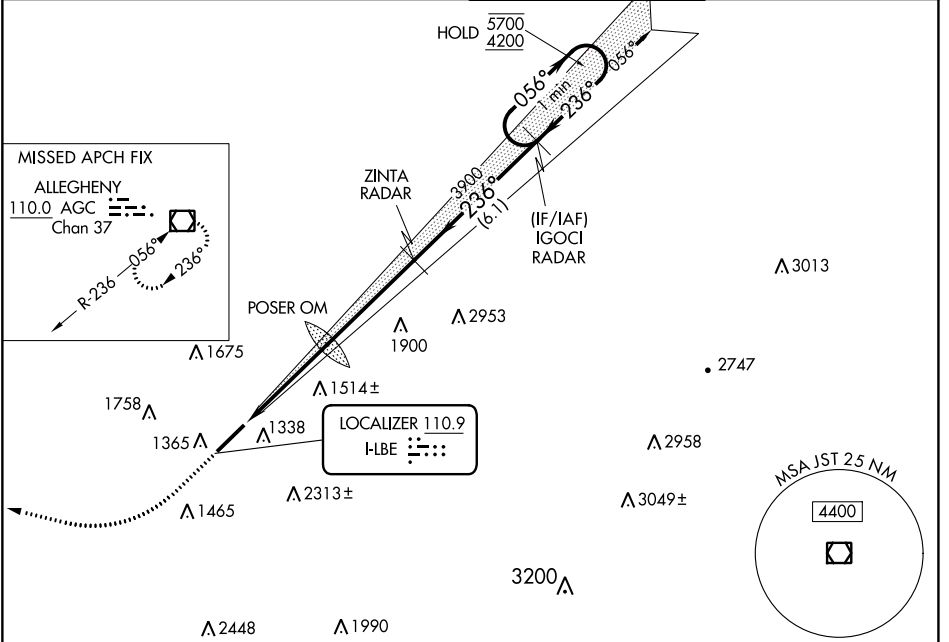
ARNOLD PALMER RGNL (LBE)

RNAV 1-GPS or RADAR required for procedure entry.  
From IGOCI: RNAV 1-GPS required.  
RADAR required.

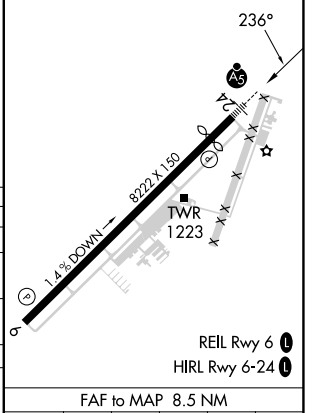
**⚠** Circling NA SE of Rwy 6-24. Inop table does not apply to S-LOC 24 Cats C/D.  
**⚠** For inop ALS, increase POSER OM minimums S-LOC 24 Cats C/D visibility to 1 3/4 SM.

MALSR  MISSED APPROACH: Climb to 2000 then climbing right turn to 5000 direct AGC VOR/DME and hold.

ATIS <b>118.375</b>	JOHNSTOWN APP CON * <b>121.2 299.2</b>	PALMER TOWER * <b>125.0 (CTAF)</b>	GND CON <b>121.8</b>
------------------------	-------------------------------------------	---------------------------------------	-------------------------



ELEV 1199	TDZE 1145
-----------	-----------



CATEGORY	A	B	C	D
S-ILS 24		1345-1/2	200 (200-1/2)	
S-LOC 24	2380-3/4 1235 (1200-3/4)	2380-1 1235 (1200-1)	2380-3	1235 (1200-3)
<b>C</b> CIRCLING	2380-1 1/4 1181 (1200-1 1/4)	2380-1 1/2 1181 (1200-1 1/2)	2380-3	1181 (1200-3)
POSER OM MINIMUMS				
S-LOC 24	1760-1/2	615 (600-1/2)	1760-1 3/8	615 (600-1 3/8)
<b>C</b> CIRCLING	1760-1 561 (600-1)	1780-1 581 (600-1)	2060-2 1/2 861 (900-2 1/2)	2060-2 3/4 861 (900-2 3/4)

FAF to MAP 8.5 NM					
Knots	60	90	120	150	180
Min:Sec	8:30	5:40	4:15	3:24	2:50

NE-4, 22 FEB 2024 to 21 MAR 2024

NE-4, 22 FEB 2024 to 21 MAR 2024