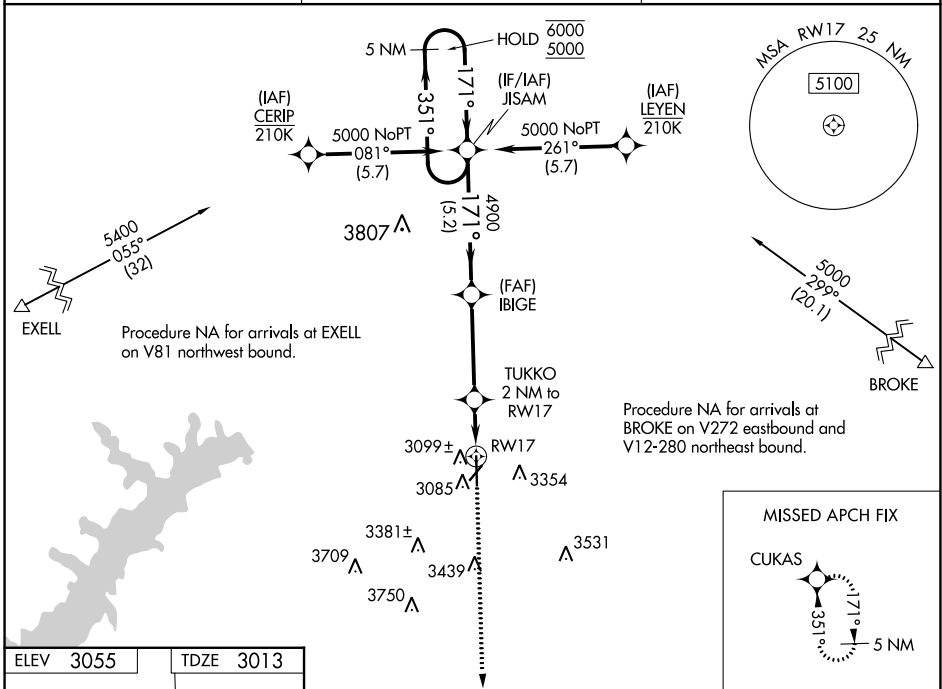


WAAS CH <b>99442</b> <b>W17A</b>	APP CRS <b>171°</b>	Rwy Idg <b>6299</b> TDZE <b>3013</b> Apt Elev <b>3055</b>
--	------------------------	---

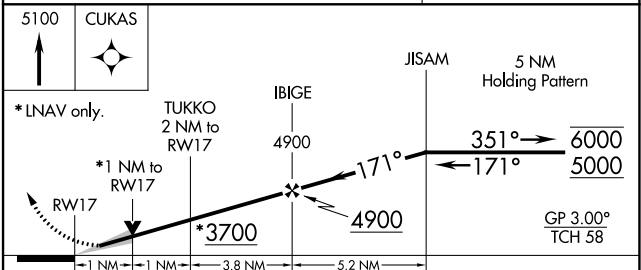
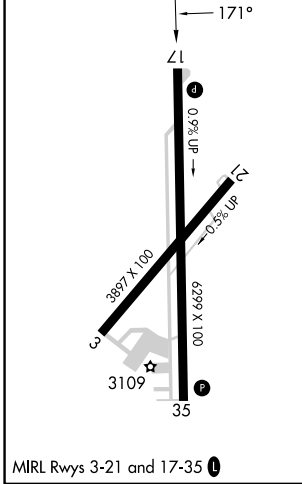
# RNAV (GPS) RWY 17

HUTCHINSON COUNTY (BGD)

RNP APCH.		MISSED APPROACH: Climb to 5100 direct CUKAS and hold.
ASOS <b>118.325</b>	AMARILLO APP CON * <b>119.5 307.0</b>	UNICOM <b>123.0 (CTAF) 0</b>



ELEV 3055	TDZE 3013
-----------	-----------



CATEGORY	A	B	C	D
LPV DA		3263-1	250 (300-1)	
LNAV/VNAV DA		3280-1	267 (300-1)	
LNAV MDA		3360-1	347 (400-1)	
<b>C</b> CIRCLING	3620-1 565 (600-1)	3660-1 605 (700-1)	3760-2 705 (800-2)	3760-2½ 705 (800-2½)

SC-2, 22 FEB 2024 to 21 MAR 2024

SC-2, 22 FEB 2024 to 21 MAR 2024