

APP CRS	Rwy Idg	<b>3509</b>
<b>289°</b>	TDZE	<b>869</b>
	Apt Elev	<b>869</b>

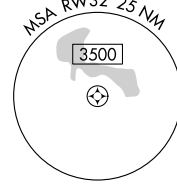
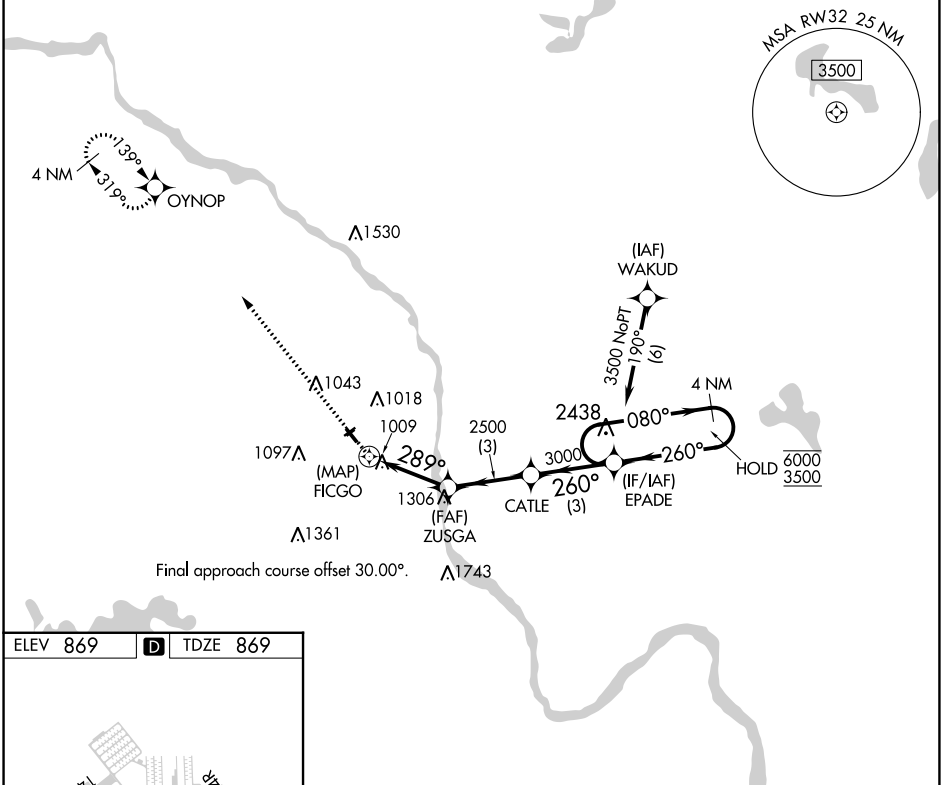
# RNAV (GPS) RWY 32

CRYSTAL (MIC)

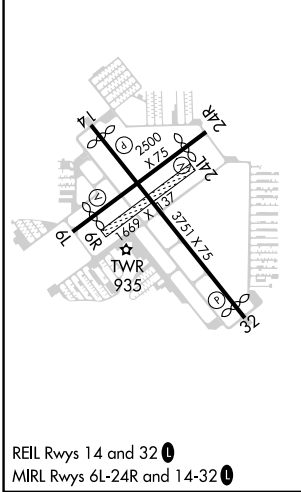
RNP APCH.  
 ⚠ Circling NA to Rwys 6R and 24L.  
 ⚠ Rwy 32 helicopter visibility reduction below 3/4 SM NA.

MISSED APPROACH: Climb to 3000 direct OYNOP and hold.

ATIS <b>124.475</b>	MINNEAPOLIS APP CON <b>126.5 335.65</b>	CRYSTAL TOWER* <b>120.7 (CTAF) ①</b>	GND CON <b>121.6</b>	CLNC DEL <b>121.6</b>	CLNC DEL <b>121.6</b> (When twr closed)	UNICOM <b>122.95</b>
------------------------	--	---	-------------------------	--------------------------	---	-------------------------



ELEV 869	<b>D</b>	TDZE 869
----------	----------	----------



3000	OYNOP	EPADE 4 NM Holding Pattern			
↑	✧	ZUSGA	CATLE	EPADE	4 NM Holding Pattern
		≤ 4.00° TCH 35	260°	080° → 6000	← 260° 3500
		289°	3000		
0.8	3 NM	3 NM	3 NM		
CATEGORY	A	B	C	D	
LNAV MDA	1380-1	511 (600-1)		NA	
<b>C</b> CIRCLING	1380-1	511 (600-1)		NA	

NC-1, 22 FEB 2024 to 21 MAR 2024

NC-1, 22 FEB 2024 to 21 MAR 2024