

JUNPR SIX DEPARTURE (RNAV)

AUGUSTA DEP CON ★
119.15 284.625
CLNC DEL
126.075
CTAF
122.8

**TOP ALTITUDE:
ASSIGNED BY ATC**

RNAV 1 - DME/DME/IRU or GPS required.

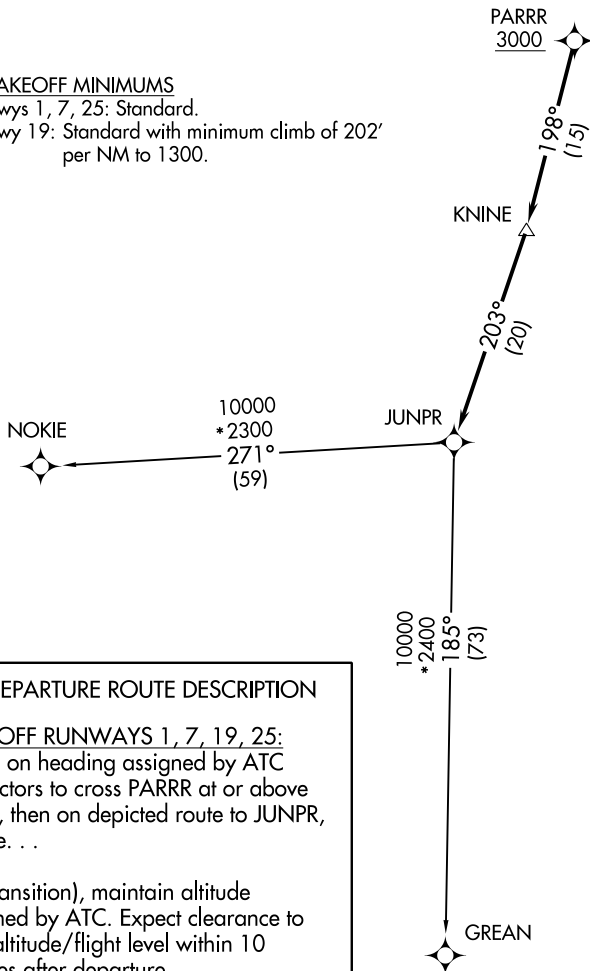
RADAR required.



NOTE: Do not exceed 250K until advised by ATC.

TAKEOFF MINIMUMS

Rwys 1, 7, 25: Standard.
Rwy 19: Standard with minimum climb of 202'
per NM to 1300.

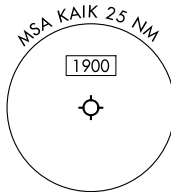


▼ DEPARTURE ROUTE DESCRIPTION

TAKEOFF RUNWAYS 1, 7, 19, 25:
Climb on heading assigned by ATC for vectors to cross PARRR at or above 3000, then on depicted route to JUNPR, thence. . .

. . . (transition), maintain altitude assigned by ATC. Expect clearance to filed altitude/flight level within 10 minutes after departure.

GREAN TRANSITION (JUNPR6.GREAN)
NOKIE TRANSITION (JUNPR6.NOKIE)



NOTE: Chart not to scale.

JUNPR SIX DEPARTURE (RNAV)

SE-2, 22 FEB 2024 to 21 MAR 2024

SE-2, 22 FEB 2024 to 21 MAR 2024