

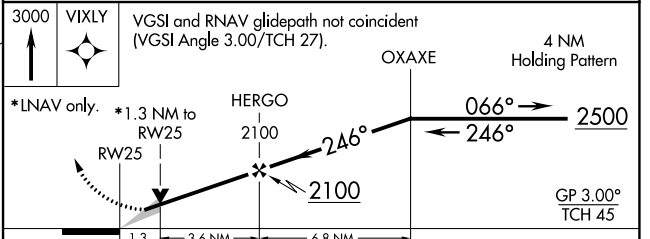
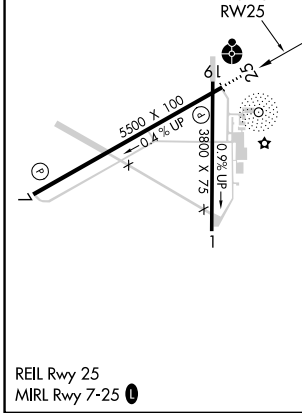
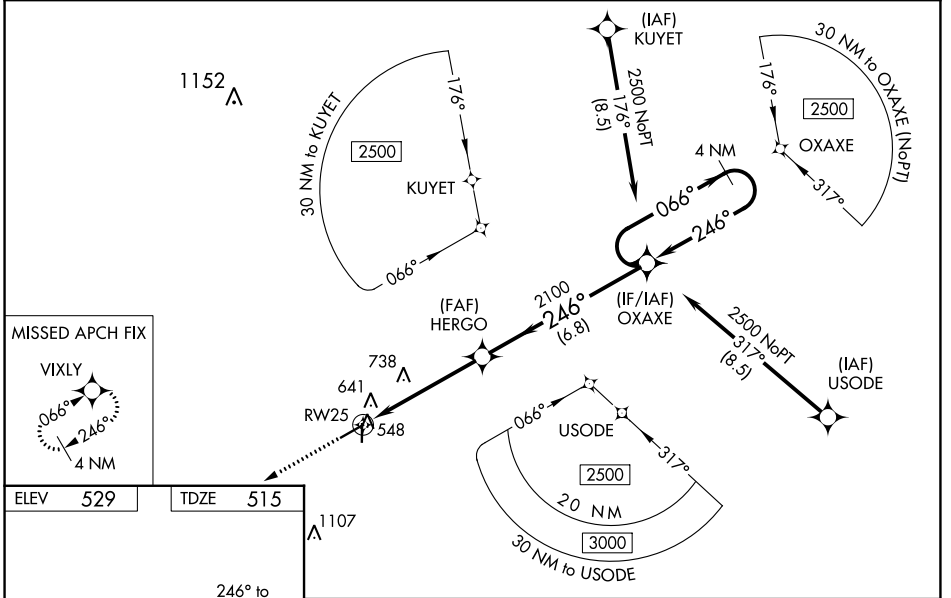
WAAS CH 50301 W25A	APP CRS 246°	Rwy Idg TDZE Apt Elev	5500 515 529
--	------------------------	-----------------------------	---

RNAV (GPS) RWY 25

AIKEN RGNL (AIK)

RNP APCH.	 MISSED APPROACH: Climb to 3000 direct VIXLY and hold.
Baro-VNAV NA when using Augusta Rgnl at Bush Fld altimeter setting. VDP NA with Augusta Rgnl at Bush Fld altimeter setting. When local altimeter setting not received, use Augusta Rgnl at Bush Fld altimeter setting: increase LPV all Cats DA to 869 feet, LNAV/VNAV all Cats DA to 927 feet and all visibilities 3/8 mile; increase all MDA 120 feet and Cat C/D visibilities 1/4 mile. For inop ODALS, increase LPV all Cats visibility to 7/8 mile, LNAV/VNAV all Cats to 1 1/8 mile and LNAV Cat C/D to 1/4 mile. For inop ODALS when using Augusta Rgnl at Bush Fld altimeter setting, increase LPV all Cats visibility to 1/4 mile, LNAV/VNAV all Cats to 1/2 mile and LNAV Cat D to 1/8 mile.	

AWOS-3 118.025	AUGUSTA APP CON * 119.15 284.625	CLNC DEL 126.075	UNICOM 122.8 (CTAF)
--------------------------	--	----------------------------	-------------------------------



CATEGORY	A	B	C	D
LPV DA	765-3/4 250 (300-3/4)			
LNAV/VNAV DA	823-1 308 (300-1)			
LNAV MDA	940-3/4 425 (500-3/4)		940-1/8 425 (500-1/8)	

SE-2, 22 FEB 2024 to 21 MAR 2024

SE-2, 22 FEB 2024 to 21 MAR 2024