

(ORSKY3.ORSKY) 23334  
**ORSKY THREE DEPARTURE**

ANOKA COUNTY/BLAINE (JANES FLD) (ANE)  
 AL-5202 (FAA) MINNEAPOLIS, MINNESOTA

MINNEAPOLIS DEP CON  
 126.5 335.65  
 ATIS  
 120.625  
 CLNC DEL  
 121.3  
 CLNC DEL  
 121.85 (when twr closed)  
 ANOKA TOWER ★  
 132.4

**TOP ALTITUDE:  
 ASSIGNED BY ATC**

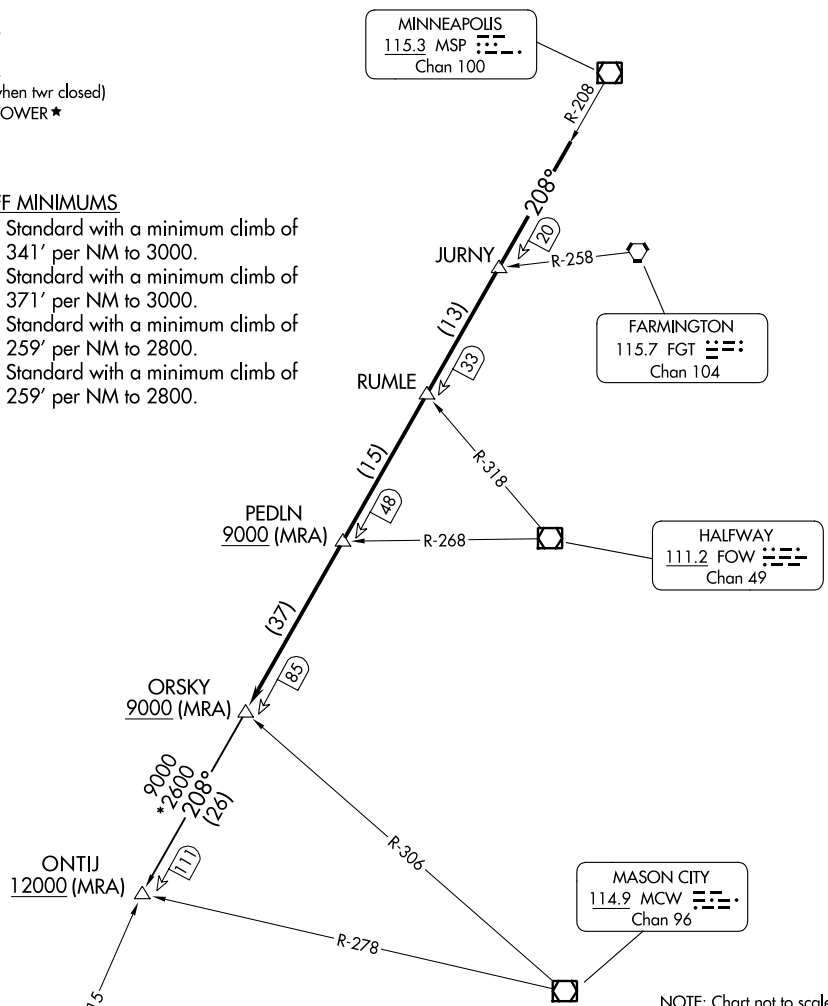


RADAR required.

**TAKEOFF MINIMUMS**

- Rwy 9: Standard with a minimum climb of 341' per NM to 3000.
- Rwy 18: Standard with a minimum climb of 371' per NM to 3000.
- Rwy 27: Standard with a minimum climb of 259' per NM to 2800.
- Rwy 36: Standard with a minimum climb of 259' per NM to 2800.

NC-1, 22 FEB 2024 to 21 MAR 2024



NC-1, 22 FEB 2024 to 21 MAR 2024

NOTE: Chart not to scale.

**DEPARTURE ROUTE DESCRIPTOR**

**TAKEOFF ALL RUNWAYS:** Climb on assigned heading for RADAR vectors to assigned fix on MSP R-208, then on depicted route to ORSKY, then on transition. Maintain ATC assigned altitude. Expect filed altitude 10 minutes after departure.

**ONTIJ TRANSITION (ORSKY3.ONTIJ):** From over ORSKY INT on MSP R-208 to ONTIJ INT.

(ORSKY3.ORSKY) 08SEP22  
**ORSKY THREE DEPARTURE**

MINNEAPOLIS, MINNESOTA  
 ANOKA COUNTY/BLAINE (JANES FLD) (ANE)